

RADIO DOINGS

RED BOOK OF RADIO

The Radio Authority
Pacific Coast

10¢
WEEKLY

2301 W 29th Place
Berkeley, Edw. A. Y
4-21-27
1-30-27



George Young, Catalina Channel Swim hero (third from left) before KFWB's microphone at Grauman's Egyptian Theater, Hollywood, Calif.

Vol. X

JANUARY 30—FEBRUARY 5, 1927

No. 5

Wizard and Franco Batteries for better Radio Service.

Your Radio is as good as its current supply. Without dependable batteries, even the finest set will be unsatisfactory... In the interest of greater pleasure from your radio, "Western Auto" recommends (and guarantees) Wizard "A" batteries and Franco "B" and "C" batteries.



**"Wizard"-
"A" Batteries.**

Brimful of pep, trouble free and built to last, Wizard storage batteries, at "Western Auto's" low prices, give many hours of satisfactory operation.

More than 150 Stores in the West -
**Western Auto
Supply Co.**
Main Store - 1100 South Grand Ave.
LOS ANGELES



"B" and "C" Batteries

The enviable reputation of Franco dry batteries is based on unflinching reliability.... Their many years of successful radio use are your assurance of quality.

Popular Sizes—Always Fresh.

New York Office
J. W. HASTIE
155 East 42nd Street
Vanderbilt 4661

Chicago Office
A. G. RUDOLPH
500 N. Dearborn St.

San Francisco Office
CONGER & MOODY
Sharon Building
Kearney 8483

Radio Doings

Trade Mark Reg. U. S. Pat. Off.

407 East Pico Street, Los Angeles, Calif.

"The Red Book of Radio"

H. C. CHARLES
Editor

FORBES W. VAN WHY
Technical Editor

J. S. MILLER
Associate Editor

MAJ. LAWRENCE MOTT
Associate Editor

(Entered as second-class matter, Nov. 25, 1922, Los Angeles, Cal., Post Office, under Act of March 3, 1879.)
Copyright, 1926, by Horwood Publishing Co.
Issued Weekly. Ten Cents a Copy. Three Dollars a Year. Canada and Foreign Countries, \$3.50 per Year.

Vol. X Los Angeles JANUARY 29, 1927 San Francisco No. 5

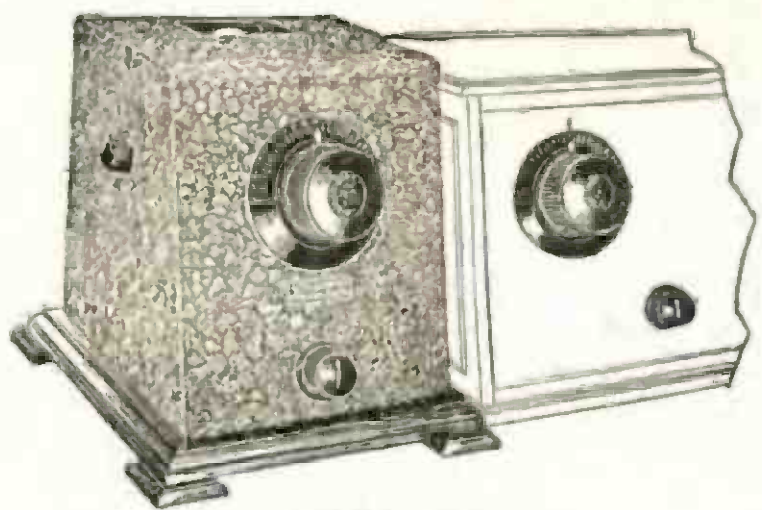
CONTENTS

	PAGE
Historical Broadcast and Rebroadcast of the Famous Catalina Channel Swim (<i>illustrated</i>) - - - - -	13 to 16
George Young to Demonstrate Swimming Prowess - - -	16
"Hitchy" Broadcasts at KFI - - - - -	16
Last Minute Broadcast Changes - - - - -	17
Question and Answer Department - - - - -	18
Radiograms - - - - -	19
DX Club Correspondence - - - - -	20
The Woman's Page - - - - -	22
Radio Topics of the Day - - - - -	23
Schedule of DX Stations - - - - -	26
Time Tables - - - - -	28 to 38
Detailed Programs - - - - -	42 to 72
Timely Trade Topics - - - - -	75
Broadcasters Digest - - - - -	76

FOR RENT A well-appointed 2-room suite in the I. N. Van Nuys Bldg., 7th and Spring Sts. Will sacrifice lease, owing to being compelled to move to larger quarters. Inquire at
RADIO DOINGS, 407 E. Pico St., Los Angeles. WE. 1401

If Not, Why Not?

Penetrola



PRICE
\$35

Everyone is talking about it. Hundreds are using it.
Thousands are in need of it.

Double your stations—penetrate interference.
PENETROLA transforms your old Radio into a powerful, up-to-date receiver.

PENETROLA will operate ahead of any set.

C. W. SMITH CO.
"The Home of Utah Speakers"

Gentlemen:
Enclosed please find check or money order for \$35 for which please send me one Walbert Penetrola. If at the end of 3 days it does not perform to my entire satisfaction I will return it and you will refund my money.

Loop type Outdoor aerial type
(Check which type of set you own)

Send me complete information about the Walbert Isofarad receiver without obligation.

NAME

ADDRESS

1125 Wall St. LOS ANGELES, CAL. WEStmore 3291



*There Are Sound Reasons
For the Success of*



RCA-Radiola

MADE BY THE MAKERS OF RADIOTRONS

Go to One of These Authorized Dealers for Sets and Service:

LOS ANGELES

Beverly Hills

CRAWFORD'S RADIO-MUSIC
445 Beverly Drive
OXford 6801

Hollywood

CRAIG RADIO SERVICE
7022 Melrose Ave.
WHitney 7312

HOLLYWOOD MUSIC CO.
6019 Hollywood Blvd.
HOLlywood 0364

Lincoln Heights

FRANK GRAVES SASH, DOOR
& MILL CO., HDW. DEPT.
2012 Pasadena Ave.
CApitol 2071

Southwest

BOULEVARD FURNITURE CO.
1574 W. Washington, at
Vermont
BEacon 0722

C & G ELECTRIC & RADIO
Co.

1501 W. Santa Barbara,
at Dalton
VERmont 5205

L. A. DUNCAN
2891 W. Pico St
EMpire 1141

FLETCHER RADIO MUSIC CO.
4705 S. Vermont Ave.
VERmont 9589

SOUTHERN CAL. RADIO CO.
2135 W. Pico St.
BEacon 7431

Highland Park

HOLLAND ELECTRIC SHOP
5632 Pasadena Ave.
GARfield 3912

South

C. W. HICKS RADIO
5007 S. Broadway
AXridge 3157

Southeast

CENTRAL ELECTRIC CO.
3802 Central Ave.
HUMbolt 2337

Wilshire

WOLFE RADIO CO.
543 S. Western
WASHington 5711

Downtown

THE ELECTRICAL APPLI-
ANCE SHOP
336 S. Broadway
TUcker 2932

HARRY W. HARRISON
848 S. Flower St.
TRinity 9777

MARTIN MUSIC CO.
734 S. Hill St.
TRinity 9621

PAN AMERICAN UNION
TRADING CO.
(Union Ins. Bldg.)
978 W. Sixth St.
MUtual 3803

ALHAMBRA

FRED B. GILLENWATER
RADIO STUDIO
127 W. Main St.
Alhambra 2032

BELL

BAKER AVE. ELECTRIC CO.
910 Baker Ave.
DElaware 1871

EAGLE ROCK

EAGLE ROCK MUSIC CO.
2144 Colorado Blvd.
ALbany 4315

GLENDALE

GLENDALE MUSIC CO.
(Salmacia Bros.)
118 S. Brand Blvd.
Glendale 90

J. A. NEWTON ELECTRIC
Co.
154 S. Brand Blvd.
Glendale 240

*“Buy With
Confidence*



*Where You See
This Sign”*

SEE THESE

New Kits and Eliminators

SILVER SHIELDED SIX

Silver Marshall's Famous Circuit—Completely Shielded—Selective—Wonderful Tone—Get the Kit of Specified Matched Parts—No. 630

For a Small Set Use the No. 620 Kit

The Silver Cockaday

Four Tubes—Single Control—Interchangeable Plug-in Coils for All Waves

All Parts for E. M. Sargent's Infradyne in Stock

Using Thorola, Camfield or All-American Coils and Remler Amplifier.
Also Special Cardwell, Hammarlund and Continental Condensers

We now have Bremer Tully's New Kit in Stock

The Counterphase Power Six—More Power, Better Tone and More Selective. Ask About it.

Also see the Karas Equimatic Kit and the National Company's Browning-Drake Apparatus

Cut Out Your "B" Battery Expense by Using a Dependable Eliminator

Acme E1 will supply sets of six tubes and up at 180 Volts

Acme E3 for sets up to six tubes at 180 Volts

E1—\$50.00. E3—\$39.50. Including Raytheon Tube

All-American Constant B—very efficient, \$39.00

Kodel's New Model 10 B Transifier, \$42.50

Kodel A and B Power Unit, Less Tube, \$65.00

New Silver Marshall Plug-In Eliminators, Type 650C

The New Sterling B Eliminator, Less Tube, \$24.00

Keep Your "A" Battery Up with a Trickle Charger

Balkite—Silite—Tungar—Acme—Sterling—Vesta

An Inexpensive Way of Keeping Your Battery at Its Best for All Times

DEALERS: Park Next Door at Our Expense

Radio Supply Co.

WHOLESALE

920 So. Broadway

VA. 6063

Los Angeles

Send for Our Catalogue

WE CARRY GOOD STOCKS

Of the Representative Lines of Radio Parts
at All Times

Here Are Just a Few of Them:

ACME Apparatus, Eliminators and All Parts
 ALDEN Truphonic Amplifiers, Parts, Etc.
 ALL-AMERICAN RADIO CORP.—Full Line
 AMERTRAN De Luxe and Regular Transformers
 AMSCO SLF Single and Siamese Condensers
 BENJAMIN Sockets, Brackets, Coils, Etc.
 BREMER TULLY Parts and Kits—Full Line
 CARTER RADIO CO.—Parts, Imp. Rheostats, Etc.
 DAVEN RADIO CORP.—All Resistance Units and Tubes
 DUBILIER CONDENSER CORP.—Complete Line
 FORMICA Black and Walnut Sheet Bakelite and Tubing
 GENERAL RADIO PARTS—Full Line of Parts
 HAMMARLUND Parts—Condensers, Coils, Etc.
 JEFFERSON Transformers and Tube Rejuvenators
 MARCO Dials, Switches and Other Parts
 NATIONAL CO.—Browning-Drake Units and Parts
 PREMIER Hedgehog Transformers and Parts
 REMLER Radio Parts—Infradyne Units, Etc.
 SAMSON Transformers and Chokes—All Sizes
 SANGAMO Bakelite Fixed Condensers—Full Line
 SILVER MARSHALL Parts, Kits and Eliminators
 STERLING Tube Testers, Eliminators, Trickle Chargers, Etc.
 THORDARSON Audio and Power Transformers
 TOBE DEUTSCHMANN Hi Test Condensers
 TOWER Cone Speakers and Head Sets
 VESTA Trickle Chargers and A Power Units
 WESTON Meters—Complete Line
 YAXLEY Parts—Rheostats, Jacks, Switches, Etc.

**ALL-AMERICAN, THORDARSON AND MAGNAVOX
REPLACEMENT TRANSFORMERS IN STOCK NOW**

DEALERS: Park Next Door at Our Expense

Radio Supply Co.

WHOLESALE

920 So. Broadway

VA. 6063

Los Angeles

Send for Our Catalogue

MODERNIZE YOUR RADIO SET

With One of Our Console Cabinets

These beautiful Consoles have a very good Duo-Tone finish, are made of Southern Gum Wood, and have a genuine Solid WALNUT top. This cabinet is adjustable to fit any size panel, 7 by 12 to 7 by 30, and also in 6 to 8 inches in height. This will make a good piece of furniture for any home.

Velvetone "B" Battery Eliminator

We have the new one in now and would be glad to show them to you. FAIR ALLOWANCE on your old "B" BATTERIES.



Complete Stock
Majestic "B"
Precision "B"
Sterling "B"
Eliminators.

Also Trickle
Chargers,
Balkite,
Acme,
Handy,
Elkon
and others.

Authorized Agents for the Magnavox and Crosley Radio Receivers and Equipment.

We can give the best allowance on your old set. Bring it in to be appraised.

The Most Complete Stock of Loud Speakers in Town.

Also a fair trade-in allowance on your old speaker. A few of our speakers are:

Western Electric, Farrand, Utah, Crosley, Magnavox, Radiola, Acme, Cannonball, Wheeling and others.

IF IT'S RADIO, SEE US FIRST FOR THE BEST

AMERICAN RADIO CO.
108 East 8TH St. - LOS ANGELES - CALIFORNIA

108 East Eighth Street
Los Angeles, Calif.

152 West Second Street
Pomona, Calif.

Why Let A Blacksmith Build Your INFRADYNE

We are experts on this set and can balance it to perfection. As specialists on this circuit we are able to answer all and any of your questions with the best technical knowledge in the city.

When we were appointed INFRADYNE SPECIALISTS we were appointed because of our RADIO ABILITY, our INTEGRITY in all our dealings, and to GIVE the BEST for the MONEY. HERE is the pudding. READ the PROOF.

December 24th, 1926.

American Radio Co.,
108 East Eighth St.,
Los Angeles, Calif.
Gentlemen:

As you asked me to let you know all about the INFRADYNE that you recently built for me, I will write you just a few words in regards to this set.

When this set was recommended to me I was a little dubious, as this was a new circuit out and not yet really tried and tested. When I gave you my order I did so with great misgivings, for I thought that the results would not justify the costs.

But this set was talked so much about that I decided to take a chance. I am no amateur in the Radio field, but felt that I could not do justice to this set, and your charges were so reasonable that I decided that you could wire it for me, and, believe me, I never regret it.

In the first place the job was a piece of art, and the RESULTS were even better than I had hoped for.

The De Luxe Audions are the best I ever heard and am going to build them in all the sets that I build from now on. We do not have to use phones on this set, and talk about DISTANCE—well, I won't mention any stations, as you would think me a LIAR or CRAZY, but I get all Eastern stations, and continuously too.

Here is the set that I can recommend to my best friends, and, believe me, I sure am going to do this.

Thanking you for the neat and quick job, I am, yours truly,

JOHN PETERSON,
Montebello, Calif.

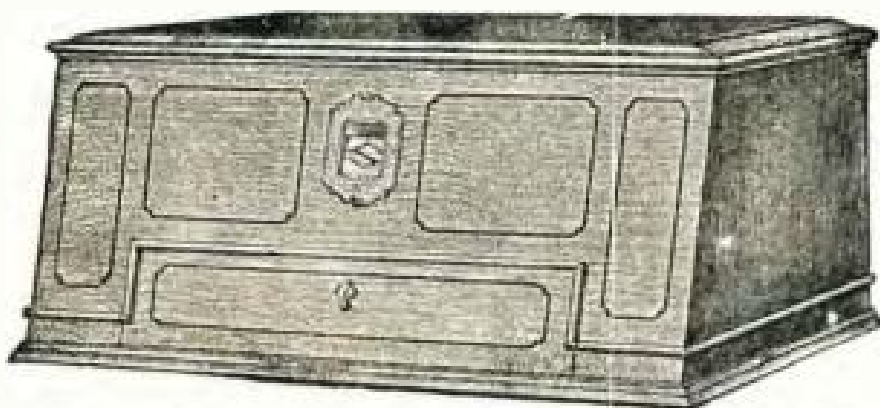
AMERICAN RADIO CO.

108 East Eighth Street
Los Angeles, Calif.

152 West Second Street
Pomona, Calif.

Bremer-Tully

Counterphase Receivers



Counterphase-Eight, Cabinet Model

The new Counterphase is setting records East, West, North and South for Daylight Reception, the hardest test for any receiver. Scores of letters received attest accomplishments never before equaled on any sets except the B-T Eight.

SOLD BY FRANCHISE DEALERS

McCLELLAND-FELTHOUSE CORPORATION

Factory Representatives

1358-60 S. Figueroa Street
Los Angeles
WEstmore 5586 and 6519

515-517 Eddy Street
San Francisco
Franklin 6226

The Historical Broadcast and Rebroadcast of the Famous Catalina Channel Swim

By Major Lawrence Mott, Signal Corps, U. S. A.
(Owner of KFWO)

This fascinating story by Major Lawrence Mott was written exclusively for Radio Doings so that you might hear from the originator of this marvelous re-broadcasting feat—how he and his associates directed the technical end of broadcasting the greatest athletic event in history.—Editor.

Friend Editor was on my trail for this article as soon as that splendid Canadian chap, Young, had accomplished the super-man feat of swimming our believed-to-be-unconquerable Channel—but I begged off for last week, being rather in a state of "all in-ness" after having been some 20 hours at the monitor board of my little Station on the Fair Isle o' Catalina.

As the 6XA-KFWO and 6XA-KNX achievement is unparalleled in the history of radio, to date, I shall endeavor to give our widespread readers a fairly comprehensive idea of how the feat was accomplished, and the many difficulties that the engineering staff of KNX, as well as Engineer Paggi and I, had to cope with.

In the first place, I wish to definitely fix in the minds of my readers the difference between telephone-line-linked broadcast, commonly called "simultaneous broadcast," such as the KFI-KPO hook-up, and the Eastern "chain" that comprises half a dozen or more stations. "Simultaneous broadcast" is so simple, when compared to the Channel Swim undertaking, that it really bears no relation, but a very large number of my air friends have asked that I differentiate between the two: Briefly, land-line-linked broadcast is merely two or more stations linked together by an ordinary pair of telephone wires. The program originating in any one certain station's studio is passed along to any number of others, and as electricity is so fast that, to all intents and purposes, it is instantaneous, so that a program put on—as the football game at the Rose Bowl in Pasadena, some time ago, for instance—was released from a chain of stations all the way to the Atlantic seaboard, and, seemingly, at the same instant! There was, of course, a loss of time in the transmission of my good friend McNamee's voice, speaking into the microphone at the Rose Bowl, and its issuance from loud speakers in Atlantic States, but that loss was so in-

initely small that, save for scientific measurements, it did not exist. Such "simultaneous" programs are always entirely feasible, entailing merely some very-much-money'd firm, or individual, footing the heavy bill in order to place his name or his wares before an enormous public. The cost of the simultaneous wire-casting of the Rose Bowl game was so great that were I to set the figures forth I might be thought grossly exaggerating! It is, in many keen business minds, a matter of very



EDWARD ALBRIGHT
of KNX, who Major Mott says "made radio history"

grave consideration as to whether a firm gets even a reasonable return from these fearfully expensive land-line-linked broadcasts. From an experience

Broadcast of Catalina Channel Swim--Cont.

in radio of many years, and more particularly from my experience in broadcasting effort, with hundreds of thousands of my blessedly-kind and generous countrymen and women. I am of the unshaken opinion that the terrific charges made by the larger stations, per minute, for the use of their studios, etc., etc., is merely lining the station owner's pocket at the expense of the "sponsor"—and I can prove this in many ways, too long to enter into here.

Now, then, the instant that the Great Swim was decided upon by Wm. Wrigley, I, of course, bethought me of this UNIQUE opportunity to do something that had never been done before, at least on the Pacific Coast—I, e., put a short-wave transmitter on the splendid ship AVALON, man it with the BEST staff of announcers and technicians that could be found in Southern California, arrange with some 20 most friendly stations throughout the United States and Canada to rebroadcast KFWO, and put over the BIGGEST thing ever attempted! Very naturally, I turned to that delightful and efficient person, Naylor Rogers, of KNX, and he was enthusiastically with me in the idea! So was the Comedy King of the Screen (as I call him), Harry Langdon, of the Langdon Productions, who "sponsored" the installation of the delicate short wave transmitter belonging to KNX, that is known as "6XA"—NOT to be confounded with my experimental call letters, 6XAD.

The Santa Catalina Island Company, from Mr. Wrigley downward, were courtesy and helpfulness personified to us! Mr. David Fleming, Vice-President of the company, and in charge of all marine matters, their big fleet of splendid ships, towboats, barges, etc., etc., put his forces at the disposal of the engineers of KNX—Dean Garver and Leslie Hewitt—and matters began to move. To shorten this long yarn down to the point where the excitement begins—6XA, on a certain long wave, and I, as 6XAD (KFWO) made painfully-exact tests for some two weeks before the great event, and got everything shipshape. A string of 18 stations tested with me, night after night, from midnight onward, to get their pick-up receivers and lines in order—and "The Day" came—or, in the language of the ubiquitous movie, "Then

Came the Dawn"—of Saturday, January 15th!

I admit that when I put KFWO on the air at 8:30 that morning I was just a leetle nervous! Any ONE of almost a thousand things MIGHT go awry with the transmitter on the S.S. AVALON, or at KFWO, or at KNX!

But, thanks to the benign Creator above us all—with the exception of some difficulty in picking up 6XA on the great ship at the very beginning of broadcast, due to the fact that both the Isthmus at Catalina Island and its charming, land-locked bay are partial "dead spots" where radio effort is concerned—barring nearly an hour, until the huge vessel cleared the land—a length of time during which I went through a refined species of Purgatory, with a full million fears cascading through my mind as to "what COULD be the matter on the ship"—with this exception, that it was humanly impossible to either avoid or contravert, everything went off with the proverbial clock-like precision—thank God!

KFWO was on the air continuously (with but very few and very BRIEF intermissions) from 8:30 a. m. on the 15th until 7 a. m. on the 16th—and in that length of time I left the monitor board in the operating room of my little station but THREE TIMES.

From the time that this greatest race of all time started, soon after 11 a. m., my telephone rang—almost one continuous ringing! It took the entire time of two members of the staff at KFWO to receive congratulatory messages from—everywhere! It was interesting to note, from a scientific standpoint, the efficiency of my LOW WAVE (211.1 meters). This was definitely and decisively shown by the distances that KFWO was heard in full daylight, before far-flung listeners could pick up KNX on its wave of 337 meters. Idaho, Montana, Nevada, Utah, Arizona, New Mexico, Colorado, Wyoming, Kansas and Nebraska—all reported "in" on KFWO before 3 o'clock in the afternoon—thus, full daylight reception! And these messages were all (hundreds of them) almost identically worded—"Marvelous reception of rebroadcast from ship on channel swim." As darkness stole over the country, from the Eastward, from greater and greater distances toward the Atlantic came the reports, climaxed

Broadcast of Catalina Channel Swim—Cont.

by a telegram from the officer in charge of NSS—the great Naval Station at Arlington, just outside of Washington, D. C.—“Your rebroadcast of swim coming in perfectly here; warmest congratulations on splendid feat.”

And so it was—a successfully accomplished feat!

There was not a slip-up between 6XA and KFWO, nor between 6XA and its parent station, KNX, all through the long hours. Too much credit cannot be given Engineers Dean Garver and Hewitt, in charge of 6XA on the AVALON, who installed the entire apparatus; nor to the “faithful few” at KNX, who—even as Engineer Paggi and I—stood by their apparatus throughout one of the longest days of my entire existence on this sphere of activities! Nor can too much be said of Eddie Albright, the beloved Town Crier of the Day of KNX, whose voice never seemed to tire on shipboard, though he was talking in the open air most of the time; and (to make matters VERY difficult for the radio staff on the ship) they could receive NO reports back on their receiver, installed for the purpose, from either KNX or me, as all the press representatives were on board, and the telegraph transmitter, although on the customary 600 meters, kicked up such an infernal row that all could be heard through it. As an enormous amount of press traffic HAD TO GO THROUGH, poor Dean Garver and Albright could not be SURE that 6XA was “getting through” to KNX and KFWO, at all! In other words, Eddie Albright, as he afterward told me, put his faith in God and the best he had into the microphone! And his “best” was SUPREME! Eddie is not a sea-going announcer, yet his descriptive work of the strangely beautiful start of this race of ALL races, with the grease-covered participants, the play of light and shade, of sunlight and shadow over the mountains of Catalina, and the azure-hued bay at the Isthmus—his telling of the yachts, the revenue guard cutters provided by the Government to patrol the course—the hovering airplanes—the great excitement at the start—ALL of Albright’s work was masterly! He has written a separate page all of his very own in the history of that unique clan of men—radio announcers! And his tensely graphic word-work all through the race—of the swimmers as they were brought on

board the AVALON by the Red Cross speed boats, “all in” from either cold or exhaustion, or both—of the intimate things going on all around him on the big vessel—ALL of these things did Albright put into the floating microphone, without (let me remind you!) knowing whether his work was “going out” beyond the auxiliary antenna on the ship that had been rigged for the short-wave broadcast! Readers may, perhaps, glean something of Eddie’s predicament by considering how they would feel if, when speaking through a telephone, they were NOT SURE THERE WAS ANYONE LISTENING AT THE OTHER END! Yet Eddie’s faith was in the RIGHT place, and he “carried on” to the sweet (not “bitter”) end of that which will live for many and many a day as the GREATEST broadcast and straight-radio-rebroadcast feat since radio has grown into that which it is!

It is a sheer pleasure for me to set forth this tribute to Edward John Albright, of KNX, one of the most lovable souls that God ever breathed into the shape of a man!

To Loyal Underwood, who scoured the seas by day and by dark in speed craft, locating the various swimmers and hustling back to the ship with precise reports, and telling them on the air, himself; to John Swallow, Radio Editor of that excellent newspaper, the Los Angeles Evening Express, whose keen, analytical mind was of immense value to both Albright and Underwood; to the sports staff of the Express, who supplied the man behind the “mike” with minute-to-minute information—to these, and to many others, I extend my DEEPEST THANKS—for, although it was even I who “thunk up” the scheme, yet without the SPLENDID co-operation of all concerned, I should have been helpless.

I do not know if, even by the time that this appears in print—some ten days hence—I shall have caught up with the TERRIFIC pile of mail that began pouring in on the Monday following the race. But I seize this opportunity of expressing the thanks, that come from far down in my cardiac region, to all of those who have so generously written and wired tributes of such a delightful nature that, weather-toughened as is my face from many years in the open spaces, after big game in the wildernesses of the world, and

Channel Swim—Cont.

after the large fish of its ocean—tanned as is my hide—it has been oft suffused with blushes at the things YOU GOOD AIR PALS have written and wired, and said over the phone! I wish to assure every writer-in that his communication has been attended to, so far as has been humanly possible, as our boast at my station is, "For every communication that comes IN—one goes OUT!"

And it must not be forgotten that it was the kindly generosity of Harold M. Harding, Executive of the Radio Corp. of America of the Los Angeles office, who was responsible for the whole affair. He, it was, who loaned KNX the splendid motor generator unit for the portable 6XA on the ship, and at the last moment, after the unit that had been used in the two weeks of testing, had broken down. Mr. Harding showed himself as a splendid American Sportsman, of whom nice enough things cannot be said.

And, answering the question that is paramount in the mass of letters, "What receiver did you use for the rebroadcast of the ship?" we used the Radiola 28, with mimi-meter—something rather out of the ordinary!

Young to Appear at the "Met."

George Young, the 17-year-old winner of the \$25,000 Wrigley prize, has been signed by Frank L. Newman, Manager-Director of the Los Angeles Public Theater, to appear at the Metropolitan Theater, the week of Jan. 24th to 30th, with an exhibition of his natatorial prowess. In an especially constructed glass tank,

"Hitchy" Broadcasts at KFI

The famed and noted Raymond Hitchcock maintained his reputation as an impromptu wit during a recent KFI Midnight Frolic. With a microphone all to himself, a group gathered around him on the roof garden and a large audience at the nation's loud speakers, Hitchy produced laugh after laugh with a vengeance.

All who have ever seen the great comedian wander down the aisle of a theater and idly seat himself on the footlights will appreciate the nonchalance with which he approached the microphone. While Paderewski and Caruso admitted their fear of the 'mike,' as have Pershing and other noted figures, Hitchcock metaphorically took it to his breast.

"There's one thing about broadcasting," he muttered confidentially to the audience, "I can't see you yawn, nor walk out on me. You can't ask me for your money back. You can't sneeze just as I come to the point of a gag. I've spent ten minutes to get to. As far as I'm concerned, I think this show tonight is a great success. But since you may have a different idea, please don't write any letters."

the former messenger boy of Toronto, Canada, is showing the strokes and muscular development that carried him from Catalina to the mainland and fame.

Marjorie Hermione Bonner

FORMER HOSTESS

New York's Smart Supper Clubs

Desires Connection With Radio Broadcasting Station

Address Communications:
Box "H," c/o Radio Doings

Thoroughly Experienced In
Arranging Programs

Broadcast Changes

ELEVEN NEW STATIONS

Call	Owner	Wave Length Meters	Frequency Kcys.	Power Watts
WMBG	Havens & Martin, Richmond, Va.....	220	1363	10
WMBH	Edwin Dudley Aber, portable, Chicago, Ill..	280	1071	100
WBMH	Braun's Music House, Detroit, Mich.....	352.7	850	100
KGES	Central Radio Elec. Co., Central City, Neb..	205.4	1460	10
WCOT	Jacob Conn, Olneyville, R. I.....	265.3	1130	100
KGER	C. Merwin Dobyns, Long Beach, Calif.....	325.9	920	100
KGEQ	Fred W. Herrmann, Minneapolis, Minn.....	330	908.6	50
KGEN	E. R. Ireby & F. M. Bowles, El Centro, Calif..	281	1067	15
WMBJ	Wm. Roy McShaffrey, Monessen, Pa.....	277.6	1080	50
WMBE	Dr. C. S. Stevens, St. Paul, Minn.....	220	1363	5
WSEA	Virginia Beach Broadcasting Co., Va., Beach Va	510.9	580	500

THREE-WAVE CHANGES

KFKB, J. R. Brinkley, M. D., Milford, Kansas wave-length changed from 431.4 meters, 695 kilocycles, to 434.5 meters, 690 kilocycles.

WKBO, Camith Corp., Jersey City, N. J., wave-length changed from 303.9 meters, 986.6 kilocycles, to 220.4 meters, 1360 kilocycles.

WAFD, Albert B. Parfet Co., Detroit, Mich., location changed from Port Huron, Mich.; wave-length changed from 275.1 meters, 1090 kilocycles, to 312.3 meters, 960 kilocycles.

The power and wave-lengths given were taken from the applications for licenses. As the department has no jurisdiction in this respect, the power and wave-lengths noted are not necessarily being used by the stations.

HADDAWAY SHORT WAVE RECEIVER

The Haddaway Manufacturing Co., 1806 South Hope Street, Los Angeles, are making a short wave receiver that should interest all those who now own radio sets but are unable to pick up the short wave stations.

This set will operate in conjunction with any radio that has a tube detector, or it may be used independently by inserting a plug in separate tube socket and connecting filament terminals of the socket to the A battery and plate terminals to the phones or loud speaker, other side of speaker to 90 volts of B battery.

It tunes from approximately 35 to 70 meters and it is a very simple matter to connect it to the set you are now using. The best results are obtained by using 90 volts on the detector. This is owing to losses peculiar to short wave reception.

McKinley "B" Power Unit



A Perfect "B" Eliminator Giving a Maximum and Constant Power Supply

Absolutely no hum on local or distant reception.

- Designed for the D-X fan
- 100-Volt Units.....\$20.00
- 100-Volt Heavy Duty..... 25.00
- 150-Volt..... 35.00

Satisfactory Service Has Made Our Business Grow

Phone York 1826 for Demonstration

McKinley Radio Mfg. Co.

10905 S. Main St. Los Angeles
Excellent Dealer Proposition

THE TROUBLE SHOOTER



By FORBES W. VAN WHY
A. I. E. E., A. I. R. E.
Technical Editor Radio Doings



QUESTION—James O'Connel, Los Angeles, Calif.: I have a single tube Reinartz receiver, and have had fair results, but set is not selective enough. I would like to increase the selectivity. I receive Denver, Salt Lake, etc.

ANSWER—The Reinartz circuit, while very efficient and satisfactory, is not particularly suited for broadcast work within the limits of a congested district, such as Los Angeles. If you desire to retain the circuit, then shortening your antenna some 20 per cent is the sole solution. As far as efficiency is concerned, it is apparent that you are now obtaining that. The circuit mentioned was primarily designed for operation in conjunction with radio telegraph work and at the time of origin, was quite practical. It is O. K. in more isolated territories for broadcast reception also.

Long antenna systems give increased volume and decreased selectivity, by virtue of the fact that more energy is delivered to the receiving instruments.

QUESTION—B. F. Brunk, Cajeme, Sonora, Mexico: We have a model 20 compact AK, equipped with power tubes and special detector, 135 volts, B battery, and 9 volts C battery, type M speaker, 100-foot antenna, with 40 feet lead-in. Plenty of volume and no local interference, but have trouble separating certain American stations, which are closely tuned.

ANSWER—Glad you are not suffering from local interference, which speaks well for itself when the length of your antenna and lead-in are considered. This fact alone eliminates the receiver and by virtue of your location (Mexico) you are approximately equi-distant from several of the American stations, which, by the way, operate on the same wave-

length of 315.6 meters (890 kilocycles). Therefore, you naturally would experience difficulty in separating these stations on same wave-length, equal power and same relative distance from you. Your salvation lies in future legislations, which is not far off. Your set seems O. K., even with long antenna, since you get no local interference.

Rejuvenation of tubes helps some but very little in most cases. A rejuvenated tube is good to have as a stand by in case of emergency, but maximum results will always be obtained by replacing those tubes which fail to function at maximum efficiency.

QUESTION—Ray L. Hanners, Los Angeles, Calif.: During the rebroadcast from 6XA, through KNX, during the Catalina swim, each time that 6XA came on there was considerable telegraph code work audible. Can you explain why we did not hear this code when KNX was on from their main studio, but when they broadcast 6XA, the portable, the code came in?

ANSWER—When KNX was on from their own studio and was transmitted on 337 meters, where there is no code message being handled. When KNX switched to 6XA, the portable, which was aboard the S. S. Avalon, 6XA was transmitting on a short wave, upon which was some wireless code traffic. As KNX was tuned on the receiving side to pick up 6XA on said low wave, the KNX receivers naturally intercepted the code along with 6XA, all of which was rebroadcast from KNX main station. In short, you were tuned to 337 meters and was hearing all that was going on at the shorter wave, which, I believe, was somewhere near 90 meters, or slightly above.

Radiograms

By CLOYD MARSHALL, JR.

Young Victories

The two big victories of the year in California have both been won by "Youngs." We have heard that Governor Young won, due to the unpopularity of the Governor before him. George Young won because of clean living, courage and determination. Some difference.

Good Equipment

When an automobile dealer sells you a car he equips it with a good carburetor, first class tires and high test gasoline. He does not put in a cheap carburetor, poor tires and low test gasoline or kerosene. Radio dealers, when you install a high-priced set in a home do the same as the automobile dealer and put in the best accessories that the customer can afford. You will then get good results, your customer will be satisfied and it will not cost you time and money to make a lot of service calls.

A New Definition

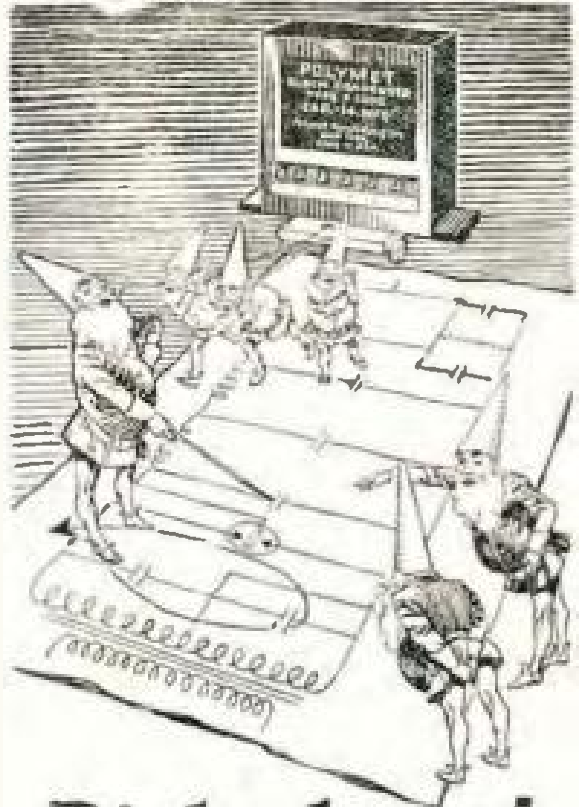
Judging from the honesty and ability displayed by some of the men in public office, the new edition of Webster's Dictionary should define a politician as one whose living depends upon election.

Tolerance

Wisdom, sagacity and judgment should be attributes of mature minds. Youth for speed, energy and endurance. Young won the Catalina swim, again proving that youth excels in physical prowess. When will people take these lessons to heart? The older people should stop criticizing the young for their seeming irresponsibilities, and the young stop objecting to the conservatism of the old folks.

Call Your Station

When you wish to get off at a certain station you give the conductor the name of your street or station. Announcers, if you wish to have the Radio fans know who they are listening to, give your station call letters. We Radio fans would be much happier if you Announcers stop some of your senseless chatter and give us more real information.



Right here!

You can't go wrong when you use Polymet High Voltage Condensers in sets or power units. Built to withstand 1,000 volts permanently, and individually tested for this rating. Incorporate finest impregnating compounds. Individual units or in blocks; cans or unmounted; fixed or flexible leads.



Capacities .1 to 5. Mfd. 60c to \$4.50

RAYTHEON CIRCUIT BLOCKS

Tested by the Raytheon Laboratories, they have passed with highest honors and been given an ample rating.

F1001—1-C-1 Mfd. \$2.00

F1000—14 Mfd. 9.50

At all good dealers everywhere.

Illustrated descriptions sent FREE on request

* Polymet Manufacturing Corporation
599F Broadway New York City

Pacific Coast Representatives
THE SPECTOR COMPANY
Rialto Building, San Francisco, Cal.
"World's Largest Manufacturer of Radio
Components"

POLYMET



INFORMATION WANTED

Cowell, Calif.,
Jan. 7, 1927.

Gentlemen:

Will you please advise me, or publish, so the fans can advise me what station uses the slogan, "Big Ben."

On Dec. 6, between 7:00 and 7:30 p. m. I had a station which announced four times Big Ben, but gave no call letters or, at least, did not hear them. I think it was a distant station, as I had on a lot of volume. The dial reading is around 230 meters; it was just below Long Beach, and just above Catalina, or about 9 on the dial on a Kennedy set, model 30.

Am anxious to know where this station is; it may have been WOK, Homewood, Ill.

Yours very truly,
A. G. BURG.

BEAT THIS ONE

1325 Washington Blvd.,
Venice, Calif.

Although my list of DX stations is not so big, under the receiving circumstances I'm in, it's not so bad.

Using a Radiola 20 and Radiola speaker No. 100, 100-ft. aerial, and with KFVD 3 blocks away, and KNRC ½-mile away, and Southern Calif. Edison 50,000-volt feed lines 10 feet from aerial, I manage to pull the following stations through on the loudspeaker:

27 California stations.

5 Washington stations.

3 Oregon stations.

KSI., KFAU, KOB, KOA, KPVE, KLZ, KMOX, KFKX, WOAW, WHO, WIO, WORD, WJAZ, WENR, WEBH, WSWS, KFAO, KFQB, AMB, KDKA, CNRV, WJR, WOCB, WJZ, WGRB

These stations come in regularly, and I don't need to make the set oscillate to get them. Only 56 stations, but not so bad for a loud speaker.

Yours,
GORDON LEE

KDKA broadcasts every evening between 6 and 7 o'clock on 63 meters, Pacific standard time.

PAGING MR. GELLES

4764 Mendota Ave.,
Los Angeles, Calif.,
January 18, 1927

Editor of DX Club:

This may interest some of you DX fans, considering that I am located in the midst of fourteen local stations. Here is what I have pulled in the last sixty days, with my 5-tube, Federal-Ortho-Sonic, using no power units, all loud speaker reception:

KFWO, KFSD, KLX, KGO, KTAB, KPO, KGW, KSD, KOA, WOAW, WHO, KYW, KSL, KFBK, KOWW, WSWS, KFWH, KOMO, KFRC, KFJR, WJR, WCX, KDKA, KMOX, CNRV, KYA, KFPY, KFAU, KFKX, AMB, KOIN, WIP, KGU, WLW.

We can verify all of these stations, in fact, we have about half of them verified now, including KDKA, KMOX, KYW, CNRV, WJR, etc.

I should like to say to Mr. Gelles of Alaska, that I believe if he had his C-38 Panatropie Radiola here on Terminal Island, and had to dodge through all the local stations we have to, he would probably be disappointed with his reception.

However, "Mr. Gelles," your letter was very interesting, and your ground system sounds good to me.

MR. G. W. BRANTNER.

BREAKING RIGHT THROUGH

Jan. 18, 1927.

DX CLUB.

I thought I would write in and let the club know of my results. My set is a home-made 3-tube Robert's set. So far I have logged over a 150 stations, the more distant ones being verified. The results are not extraordinary, but I think they are fairly good for a set of this type.

A. BROWNE,
1630 Arch St.,
Berkeley, Calif

Programs of British broadcasting stations are never superimposed on regular programs, nor are they broadcast on Sundays.

Radio Individuality

OWNERSHIP of a STROMBERG-CARLSON Radio Receiver is an expression of true Radio Individuality. Its dignified and distinctive appearance in the home and perfect reproduction and performance is the unfailing evidence of a discriminating owner.

The real lover of musical reproduction immediately recognizes in STROMBERG-CARLSON an instrument of harmony and delightful entertainment which takes its place alongside the finest piano or phonograph in the musical home.



No. 602, Universal Receiver, Art Console. 6 tube; totally shielded; space for all socket power supply or battery equipment; dual control; equipped with voltmeter. American Walnut. Price, without accessories \$360.00

STROMBERG-CARLSON Individuality is best expressed in its presentation at the new STROMBERG-CARLSON Radio Studio. If you want to hear perfection in Radio music visit the Studio some evening and enjoy one of the many beautiful programs on the air as only a STROMBERG-CARLSON can reproduce them.

STROMBERG-CARLSON RADIO STUDIO

"A Perfect Setting for a Perfect Set"

Open Evenings

3831 Wilshire Blvd.
Phone
WASHINGTON 4095



By CAREY PRESTON RITTMEISTER

Imagine a snake loose in a radio studio! A popular Eastern announcer tells of receiving a package containing an unusual snake, about which the sender wished information as to its particular family and breed. He opened the package in the studio just before the Nature Talk was to be given and hurriedly placed the snake in the box, covering it with papers, and laying the cover over the top. At the conclusion of his talk he found that the snake had escaped. After some search, Sir Snake was recovered and sent to a Zoo before he had an opportunity to make a microphone appearance.

A STUDIO 'POSSUM HUNT

This reminded me of a 'possum, which some admirer of "Uncle Remus" sent to KHJ in its early days. The little animal was placed in a box outside the studio and left for the night, but on arrival at the studio the next day we found he had escaped. Then ensued the first 'possum hunt ever pulled on the roof of a city building. There were plenty of good hiding places, but, unfortunately, we had no dogs for the chase, and we could not locate him. When the studio opened the next morning, one of the canary birds had disappeared from its cage, leaving a litter of yellow feathers to tell the tragic tale of its struggle for life. Strange to say, the verdict was that a rat must have caught the bird, for it seemed impossible that the 'possum could have entered the studio." But, later in the day, at the close of an hour of music broadcast, a stirring of a drape over a table caused an investigation, and the

'possum, whose dinner bill had totaled fifty dollars, was dragged out and placed in a barrel, the top nailed on, leaving only a small space for air.

Again we found it necessary to leave him over night on the roof, and again he escaped. The hunt was repeated, but this time he was not found.

Nearly a week later, a pedestrian passing the building was startled to see a small animal come hurtling through the air, landing at his feet. His first thought was that it was raining cats and dogs, but when he realized that this was the animal whose loss had been broadcast, poor little dead 'possum was brought to the studio. Either the little fellow had committed suicide or, in reaching over the parapet in an effort to pull a pigeon from its nest, had lost his balance. We all breathed easier when sitting on upholstered chairs and couches, and that night all the canary birds slept in peace.

SHRIMP SALAD

A good salad to serve with a dinner and one which would relieve the necessity of any other vegetable is "Shrimp Salad," made with 2 lbs. of boiled and shelled shrimps, with $\frac{1}{2}$ cup minced celery, 1 teaspoon salt and a few drops of lemon juice. Arrange this in layers alternately with 4 sliced tomatoes and 1 dozen stoned olives. Serve 1 head of lettuce with 1 cup of mayonnaise. Cut the head of lettuce in quarters or eights and place the salad mixture on a large lettuce leaf—1 heaping tablespoon on each plate.

Radio Topics of the Day

A Weekly Review of Radio News, Thought and Opinion

ENGLAND FORGING AHEAD IN BROADCASTING

The British broadcasting stations are not only up to date, but are in some ways ahead of the American stations. Several weeks ago they broadcasted a complete performance of the Rimsky-Korsakov opera, "Kitesh," from the Covent Garden Opera House in London.

2LO, London, broadcasted a complete rehearsal of the new theatrical production, "R. S. V. P.," which is now appearing at the Vaudeville Theater.

The English public have been enjoying during the last Fall and Winter the broadcasting of "Seaside Nights." Westminster Abbey Evensong Service, the Changing of the Guard of Buckingham Palace, the offering of the Keys of the City, in the Tower of London, to Sir Allen Cobham on his return from flying to and from Australia, the National Town Criers' contest at Pewsey, the opening of the new Liverpool Cathedral organ, one of the largest in the world, and the song of a real nightingale.

CORRECT ENGLISH

A committee has recently been formed in England, consisting of George Bernard Shaw, Sir Johnston Forbes-Robertson, Prof. Daniel Jones and Logan Pearsall-Smith, with Robert Bridges, the poet laureate, as chairman, to lay down principles of pronunciation of English for the radio announcer to follow.

This committee was formed not to dictate but to help raise the standard of the English spoken word.

RADIO INDISPENSABLE TO EXPLORERS

Col. Carmi A. Thompson, who was appointed a special commissioner by President Coolidge to investigate conditions in the Philippine Islands, has just returned with a detailed report of this investigation.

"Radio was the salvation of our party," Col. Thompson said with enthusiasm. "We traveled most of the time in boats. Both vessels were equipped with wireless which kept us in constant communication with the Naval Station at Los Banos. The service was perfect and, no matter where we were, we were always in communication with the United States."

Men who go exploring distant points of the earth need no longer be lost for months at a time, for radio will give them a direct connection with their own country.

RADIO EQUIPPED HOMES

A New York organization is building 360 model houses, which will be specially designed for efficient reception of radio. A radio set is part of the equipment of each house.

DEBATE ON RADIO LEGISLATION

Norman Baker, of Muscatine, Iowa, President of the American Broadcasters, has challenged Representative White and Senator Dill to a joint debate to be broadcasted from Station KTNT, as to the merits of the White-Dill radio bills.

Amazing New Invention! Use your Piano for your Radio's Loud Speaker!

Perfect radio reproduction at last! Low tones—high tones—tones that can't be heard on ordinary speakers—come in mellow and clear on the Holmes "Invisible Speaker." It reproduces *every* note in the musical scale *perfectly*, by utilizing the long overlooked principle of the wooden piano sounding board, which has always been recognized as the most per-

fect musical sound reproducer. And now the Holmes Speaker links your radio set with your piano—without harming or interfering with either one—and, because it has no ugly horn, costs less than any good speaker you can buy. You can attach the Holmes yourself in a moment. Then compare it with other speakers in your home—and feel again the thrill of radio. Hear *all* the music!

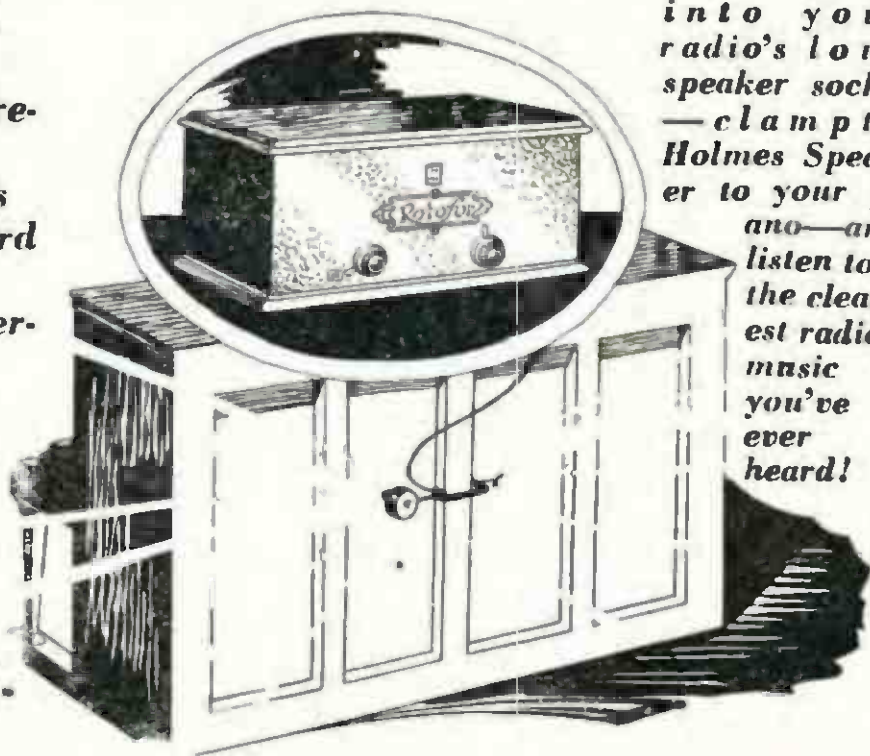
No more unsightly horns.

No more harsh, tinny reproduction.

Your piano's sounding board reproduces every note perfectly.

Positively will not harm or interfere with your piano.

Attaches instantly to upright or grand pianos.



Plug the cord into your radio's loud speaker socket—clamp the Holmes Speaker to your piano—and listen to the clearest radio music you've ever heard!

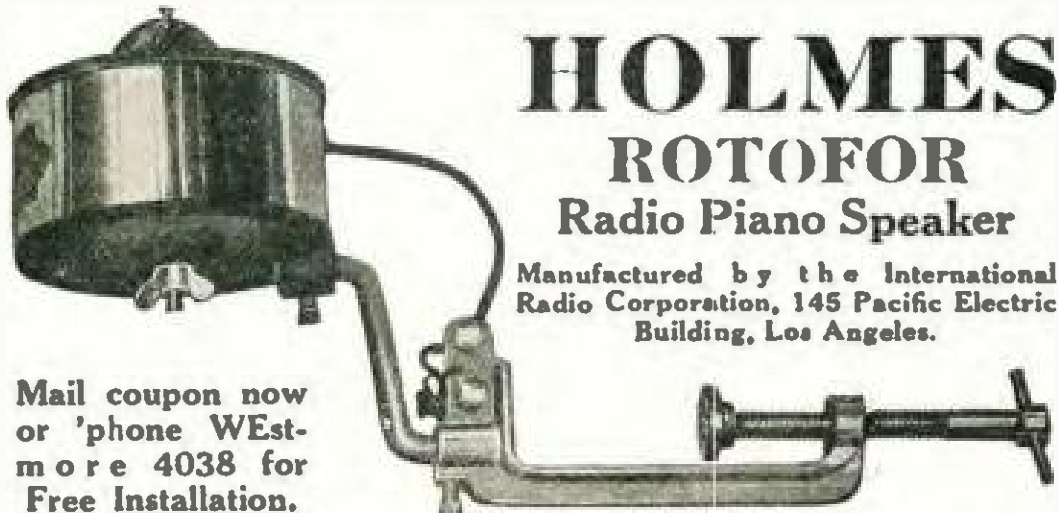
Special Offer!

A factory expert will install this speaker on your piano and

Guarantee Satisfaction!

Just to prove to you that this remarkable new speaker will do all that we claim—we will send a factory expert to your home any time you say and attach the speaker to your piano. We guarantee you'll be satisfied! This demonstration and comparison with the tone of your old speaker will take

only a few moments, and then you'll be convinced. The Holmes Speaker costs only \$28—much less than is asked for speakers of inferior tone....Give this order to your dealer or phone direct to A. J. Tobey Co., giving your dealer's name, who will get full credit for the sale.



HOLMES ROTOFOR Radio Piano Speaker

Manufactured by the International Radio Corporation, 145 Pacific Electric Building, Los Angeles.

Mail coupon now or 'phone Westmore 4038 for Free Installation.

TEAR OUT AND MAIL TO

A. J. Tobey Co.

Fifteenth and Hope Streets, Los Angeles, Calif.

Send a factory expert to my address to install a Holmes Rotofor Radio Piano Speaker. I understand you guarantee satisfaction. Have expert call at

Date..... Hour.....

Name.....

Address.....

City..... State..... Your 'phone number.....

Dealer's Name..... Address.....

Schedule of DX Stations

Call Letters	Location	W. L. Meters	Power Watts	Schedule of Concert and Dance Music
WBBM	Chicago	226	1500	Daily except Mon. and Fri., 6 to 10 p. m.
WIBO	Chicago, Ill.	226	1000	Mon., 4 to 6 p. m.; Fri., 10 to 12 p. m.
WOWO	Ft. Wayne, Ind.	227	1000	Wed., 6:15 to 10 p. m.
KUT	Austin, Texas	231	500	Mon., Wed., 6 p. m.; Sun., 9 a. m.-1:30 p. m.
WHT	Chicago	238-400	3500	Daily except Sun. and Mon., 8 to 10 p. m.
WVAE	Plainsfield, Ill.	242	5000	Daily except Sun., 7 to 10 p. m.
WOOD	Grand Rapids	242	1000	Fri. and Sat., 7 to 10 p. m.
WBAL	Baltimore	246	1000	Mon.; Tues., Thurs., Fri., 5 to 9 p. m.
WRVA	Richmond, Va.	256	1000	5:30 to 8 p. m.
WKAF	Milwaukee, Wis.	261	5000	Mon., Wed., and Fri., 8 to 9 p. m.
WCAR	San Antonio, Texas	263	6000	Daily except Sun., 6 to 8 p. m.
WENR	Chicago, Ill.	266	1000	Daily except Sun. and Mon., 8 to 7 p. m.
WGHB	Clearwater, Fla.	266	500	Daily except Sun., 5:30 to 7 p. m.
WGHP	Detroit	270	1500	Wed., 5 to 7 p. m. Thurs. and Fri., 7-9 p. m.
WHK	Cleveland, Ohio	273	1000	Daily except Sun., 3:30 to 4:30 p. m.
WORD	Chicago, Ill.	275	5000	Thurs. and Sat., 6 to 8 to p. m.
WGBU	Tulford, Fla.	278	500	Daily except Sun., 5 to 10 p. m.
KFAU	Boise, Idaho	280	750	Thurs., 8 to 10 p. m.
KMOX	St. Louis	280	1500	Daily except Sun., and Thurs., 1 to 9 p. m.
WSM	Nashville, Tenn.	282	1000	Mon., Wed., Sat., studio concert 8-10 p. m.
WMBF	Miami Beach, Fla.	284	5000	Daily, 4 to 5:30 p. m.; 7 to 11 p. m.
WAIU	Columbus, Ohio	294	750	Fri., 4 to 7 p. m. Mon., 6 to 8 p. m.
KPRC	Houston	297	500	Sat. and Wed., 8 to 10 p. m.
WPG	Atlantic City	300	500	Daily, 6 to 8 p. m.
WGN	Chicago	303	1000	Daily except Sun., 8 to 9 p. m.
WLIB	Chicago	303	4000	Daily except Sun., Mon., Wed., 9 to 11 p. m.
KOIL	Council Bluffs	306	500	Daily except Sun. and Wed., 4 to 9 p. m.
WAHG	Richmond Hill, N. Y.	316	500	Mon., Wed., Fri., 4:30 to 7 p. m. Sat., 9 p. m.
WGR	Buffalo	319	750	Mon. and Fri., 6 to 10 p. m.
WKRC	Cincinnati	326	1000	Sun., Tues., Thurs., Sat., 8 to 10 p. m.
WSAI	Cincinnati, Ohio	326	5000	Tues., 3:30 to 8 p. m.; Sat., 8 to 8 p. m.
WJAZ	Chicago, Ill.	330	1500	Sun., 4 to 6 p. m.; Tues., Fri., Wed., 6-9 p. m.
WBZ	E. Springfield, Mass.	333	2000	Daily except Sun., 3:30 to 7:30 p. m.
KFAB	Lincoln, Neb.	341	1000	Mon., Tues. and Wed., 6:10 to 8:30 p. m.
WCBD	Zion, Ill.	345	5000	Tues., Thurs., 6 to 8:30 p. m.
WLS	Chicago	345	5000	Wed., Fri., Tues., 4 to 10 p. m.
WWJ	Detroit	353	1000	Daily except Sat. and Sun., 4 to 5 p. m.
CFCA	Toronto	356	2000	Wed., 8 to 9 p. m.
WHB	Kansas City	366	500	Sun., 8 to 11 p. m. Tues., 5 to 8 p. m.
WDAF	Kansas City	366	1000	Daily except Sunday.. 9:30 to 11 p. m.
WJJD	Mooseheart, Ill.	370	1000	Daily except Sun., Mon., 6 to 7, 8 to 9 p. m.
WRNJ	New York City	374	500	Sat., 9 to 10 p. m., DX hour.
KFBU	Laramie, Wyo.	375	500	Mon., Wed., Fri., 8 to 10 p. m.
KVO	Briston, Okla.	375	1000	Daily except Sun., 9 to 11 p. m.
KTHS	Hot Springs, Ark.	375	1000	Daily 7 to 9:30 p. m.
WHAZ	Troy, N. Y.	379	1000	Mon., 5 to 7:30 p. m.
WEAR	Cleveland, Ohio	389	1000	Tues., Thurs. and Fri., 4 to 8 p. m.
WTAM	Cleveland, Ohio	390	1000	Daily except Sun., 3 to 9 p. m.
PWX	Havana	400	1000	Daily except Thurs., 5 to 8 p. m.
WJY	New York, N. Y.	405	5000	Fri., 4:30 to 8:30 p. m.; Sun., 5 to 7:30 p. m.
CYJ	Mexico City, Mexico	410	1000	Daily except Sun., 7 to 8 p. m.
CFCF	Montreal	411	2000	Mon. and Fri., 5:30 to 8:30 p. m.
CKAC	Montreal	411	1500	Tues. and Thurs., 6 to 9 p. m.
KFQB	Ft. Worth, Texas	412	2500	Daily except Sun. and Wed., 6 to 10 p. m.
WCCO	St. Paul, Minn.	416	5000	Wed., 12:30 to 9:30 p. m.
KFXF	Denver	420	500	Mon., Tues., Sat., 7:30 to 9:30 p. m.
WLW	Cincinnati	422	5000	Sat., 5 to 5 p. m. Mon., 6 to 8 p. m.
WSB	Atlanta, Ga.	428	1000	Dly. ex. Sun., 6-7 p. m.; ex. Wed., 8:45-10 p. m.
AT9	Fort Bragg, N. C.	434	750	Tues., Thurs., Sat., 5 to 7 p. m.
NAA	Arlington, Va.	435	1000	Wed., 4:45-5 p. m.; Fri. 5:45-6:20 p. m.
WQJ	Chicago	447	500	Daily except Sun. and Mon., 8 to 12 p. m.
WMAQ	Chicago, Ill.	448	1000	Daily except Sun. and Mon., 6 to 8 p. m.
WJZ	Boundbrook, N. J.	454	5000	Daily except Sun., 1 to 3 p. m.
WBAP	Ft. Worth, Texas	476	5000	Mon., Wed. and Fri., 9 p. m. Popular prog.
CYL	Mexico City	480	1000	Sun., Tues., Fri., 8 to 9 p. m.
WEAF	New York City	491	5000	Daily except Sun., 3 to 9 p. m.
WOO	Philadelphia	508	500	Daily, 4:30 to 5:30 p. m.
WIP	Philadelphia	508	500	Tue., Thurs., Sat., 7 to 9 p. m.
WCX	Detroit	517	5000	Daily except Sat. and Sun., 4 to 8 p. m.
WJR	Pontiac	517	5000	Mon., Wed., Sat., 7 to 10 p. m.
WJR	Detroit, Mich.	517	5000	Daily except Sun., 4 to 7 p. m.
WNYC	New York, N. Y.	526	1000	Daily except Sun., 3 to 8 p. m.
WHO	Des Moines	526	5000	Daily except Sat. and Wed., 9 to 10 p. m.
KSD	St. Louis	545	500	Thurs., Fri. and Sat., 7 to 9 p. m.

Hours Shown as Submitted by These Stations Adjusted to Pacific Standard Time

Hear Our 6-Tube Balanced Crosleys, Childs Lab., 1187 W. 24th

BOSCH RADIO

Designed and constructed to be free from trouble as it is possible for advanced engineering to make it.

Completely armored and shielded assuring exceptional entertainment without the usual disturbances so often associated with radio.



Reiman Wholesale Electric Co.

218 to 228 East Third St.

Los Angeles

MEtropolitan 4280

WHOLESALE ONLY

SUNDAY TIME TABLE

ALL TIME TABLES ADJUSTED TO PACIFIC TIME
(X) Indicates Station is On the Air

10-12 A.M.		12-2 P.M.		2-4 P.M.		4-6 P.M.		STATIONS				6-8 P.M.		8-10 P.M.		10-12 P.M.															
10 00-10 30	10 30-11 00	11 00-11 30	11 30-12 00	12 00-12 30	12 30-1 00	1 00-1 30	1 30-2 00	2 00-2 30	2 30-3 00	3 00-3 30	3 30-4 00	4 00-4 30	4 30-5 00	5 00-5 30	5 30-6 00	CALIF.	Wave Length Meters	Power in Watts	STATION	6 00-6 30	6 30-7 00	7 00-7 30	7 30-8 00	8 00-8 30	8 30-9 00	9 00-9 30	9 30-10 00	10 00-10 30	10 30-11 00	11 00-11 30	11 30-12 00
	X	X														K G E P	317	1000	Los Angeles				X	X	X						
X	X	X	X						X	X						K F I	467	1000	Los Angeles	X	X	X	X	X	X	X	X	X	X	X	
			X	X												K F C R	413	500	San Bernardino					X	X						
X	X	X	X													K H J	405	500	Los Angeles			X	X	X	X	X	X	X	X	X	
	X	X														K M I C	387	500	Inglewood			X	X	X							
																K F D U	350	50	San Diego			X									
																K M T R	370	500	Hollywood	X	X	X	X	X	X	X	X	X	X	X	
X	X	X	X					X	X	X	X	X	X			K N X	337	750	Los Angeles		X	X	X	X	X	X	X	X	X	X	
X	X															K P S N	316	1000	Pasadena	X	X										
X	X	X	X									X	X			K F W C	295	200	San Bernardino							X	X	X	X	X	
X	X	X	X													K T B I	294	750	Los Angeles	X	X	X	X	X	X	X	X	X	X		
X	X	X	X						X	X	X	X				K F S G	275	500	Los Angeles		X	X	X	X	X	X	X	X	X	X	
										X	X					K F W B	252	500	Hollywood							X	X	X	X		
									X	X						K F S D	246	1000	San Diego	X	X	X	X	X	X	X	X	X	X		
X	X	X						X	X			X	X			K N R C	238	1000	Santa Monica	X	X	X	X	X	X	X	X	X	X		
X	X	X							X	X	X	X	X	X		K F O N	233	750	Lung Beach	X	X	X	X	X	X	X	X	X	X	X	X
X	X	X	X													K P P C	229	50	Pasadena		X	X	X	X							
																K F Q Z	226	500	Hollywood	X	X	X	X	X	X	X	X	X	X	X	
				X	X								X	X		K F W O	211	250	Catalina	X	X	X	X	X	X	X	X	X	X		
																K F V D	205	800	Vanice								X	X	X	X	
X	X							X	X	X	X					K P O	423	1000	San Francisco	X	X	X	X	X	X	X	X	X	X	X	
	X	X	X						X	X						K G O	361	4000	Oakland		X	X	X			X	X				
X	X	X	X													K Q W	333	500	San Jose			X	X	X	X						
X	X	X	X													K Y A B	303	1000	Oakland			X	X	X							
																X K F R C	268	50	San Francisco	X	X	X	X	X							
		X	X													K F U S	256	50	Oakland												
X	X															K R E	268	100	Berkeley												
					X	X										K F W I	250	500	San Francisco	X	X	X	X	X	X	X	X	X	X		
								X	X	X	X	X				K G Y T	207	50	San Francisco				X	X	X	X					
X	X	X	X													K G W	491	1000	Portland			X	X	X	X	X					
X	X	X														C F A C	435	2000	Calgary												
	X	X	X													K J R	384	2000	Seattle			X	X	X	X	X	X	X	X		
																K L Z	384	500	Denver		X	X	X	X							
X	X	X	X									X				K O A	322	5000	Denver		X	X	X								
																K O I N	319	1000	Portland			X	X	X							
X	X	X	X	X	X											K O M O	308	1000	Seattle	X	X	X	X	X	X	X	X	X	X		
X	X				X	X										K S L	300	1000	Salt Lake City		X	X	X	X							
																K G U	270	500	Honolulu									X	X	X	
X	X	X														K M O	250	500	Yanma			X	X	X							
																K Y W	536	3500	Chicago			X	X	X	X						
	X	X	X	X												W O W	526	1000	Omaha			X	X								
					X	X	X	X				X	X			W L W	422	500	Winnipeg		X	X	X								
									X	X	X					W O A I	394	5000	San Antonio	X	X	X	X	X							
	X	X							X	X	X	X				W G V	380	5000	Schenectady	X	X	X	X	X							
X	X							X	X	X	X	X	X	X		K V O O	375	1000	Bristow, Okla	X	X						X	X	X	X	
					X	X	X	X	X	X	X	X				K D K A	309	1000	Pittsburgh												
																K M O X	280	5000	St. Louis	X	X	X	X	X							

Hours shown as submitted by These Stations

Authorized Dealer for Fada and Crosley Sets

Sales, Service and Exchange

Battery Charging, 50c—Tubes Rejuvenated Free

DAVIS RADIO CO.

Time Payments if Desired
Open Evenings and Sundays

Westmore 6946
2817 S. Main St., Los Angeles

MONDAY TIME TABLE

ALL TIME TABLES ADJUSTED TO PACIFIC TIME
(X) Indicates Station Is On the Air

10-12 A.M.		12-2 P.M.		2-4 P.M.		4-6 P.M.		STATIONS				6-8 P.M.		8-10 P.M.		10-12 P.M.																
10:00-10:30	10:30-11:00	11:00-11:30	11:30-12:00	12:00-12:30	12:30-1:00	1:00-1:30	1:30-2:00	2:00-2:30	2:30-3:00	3:00-3:30	3:30-4:00	4:00-4:30	4:30-5:00	5:00-5:30	5:30-6:00	CALL	Wave Length Meters	Power In Watts	STATION	6:00-6:30	6:30-7:00	7:00-7:30	7:30-8:00	8:00-8:30	8:30-9:00	9:00-9:30	9:30-10:00	10:00-10:30	10:30-11:00	11:00-11:30	11:30-12:00	
X	X	X	X	X	X							X	X	X	X	XKFI	467	4000	Los Angeles	X	X	X	X	X	X	X	X	X	X	X	X	X
																XKFCR	413	500	Santa Barbara					X	X							
																XKHJ	405	500	Los Angeles					X	X							
																XKMIC	389	500	Inglewood	X	X	X	X	X	X	X	X	X	X	X	X	X
																XKFBC	380	50	San Diego					X	X	X	X	X	X	X	X	X
																XKMTR	370	500	Hollywood	X	X	X	X	X	X	X	X	X	X	X	X	X
X	X															XKNX	337	750	Los Angeles	X	X	X	X	X	X	X	X	X	X	X	X	X
																XKPSN	316	1000	Pasadena	X	X			X	X	X						
																XCVH	311	1000	Monterey, Mem.	X	X	X	X	X								
																XAMB	301	100	Tia Juana, Mex.													
																XKFWC	295	100	San Bernardino					X	X	X	X	X	X	X	X	X
																XKTB	294	750	Los Angeles			X	X	X	X							
																XKSMR	283	100	Santa Maria	X	X	X	X	X	X	X	X	X	X	X	X	X
																XWTC	283	250	Smiths Ara	X	X			X	X	X	X	X	X	X	X	X
																XKFWB	252	500	Hollywood	X	X	X	X	X	X	X	X	X	X	X	X	X
																XKFSO	246	1000	San Diego	X	X	X	X	X	X	X	X	X	X	X	X	X
																XKNRC	238	1000	Santa Monica	X	X	X	X	X	X	X	X	X	X	X	X	X
X	X	X	X	X	X											XKFN	233	750	Long Beach	X	X	X	X	X	X	X	X	X	X	X	X	X
																XKFQZ	228	500	Hollywood	X	X	X	X	X	X	X	X	X	X	X	X	X
																XKFYF	214	75	Orland Cal	X												
																XKFVO	205	500	Venice					X	X	X	X					
																XKFBK	155	100	Sacramento	X	X	X	X	X	X	X	X	X	X	X	X	X
																XKLX	108	500	Oakland			X	X	X	X	X	X	X	X	X	X	X
X	X															XKPO	428	1000	San Francisco	X	X	X	X	X	X	X	X	X	X	X	X	X
																XKYA	400	1000	San Francisco			X	X	X	X	X	X	X	X	X	X	X
																XKGO	381	4000	Oakland	X	X	X										
X																XKQW	333	500	San Jose	X	X	X	X									
																XKTAB	303	1000	Oakland			X	X	X	X	X	X	X	X	X	X	X
X	X	X	X	X	X	X	X									XKFR	268	50	San Francisco	X	X	X	X	X	X	X	X	X	X	X	X	X
																XKRE	258	100	Berkeley					X	X	X	X					
X	X															XKFUS	256	50	Oakland													
X	X															XKFWH	254	100	Eureka					X	X	X	X					
																XKFWI	250	500	San Francisco	X	X	X		X	X	X	X					
																XKZM	240	100	Oakland			X										
																XKMJ	234	50	Fresno					X	X	X	X					
X	X	X														XKIBS	220	5	San Francisco	X	X	X	X	X	X	X	X	X	X	X	X	X
																XKGY	107	50	San Francisco													
X	X	X														XKW	691	1000	Portland	X	X	X	X	X	X	X	X	X	X	X	X	X
																XKFOA	464	1000	Seattle			X	X	X	X	X	X	X	X	X	X	X
																XKPA	435	7000	Albany					X	X							
																XKFF	422	1000	Denver			X	X	X	X	X	X	X	X	X	X	X
																XKHQ	364	1000	Spokane	X	X			X	X							
X	X	X														XKJR	384	20M	Seattle	X				X	X	X	X	X	X	X	X	X
																XKLZ	384	500	Denver			X	X	X								
																XKOA	322	5000	Denver	X	X	X	X	X	X	X	X	X	X	X	X	X
																XKOIN	319	1000	Portland					X	X	X	X					
X																XKOMO	306	1000	Seattle	X	X	X	X	X	X	X	X	X	X	X	X	X
																XKOWW	285	500	Walla Walla			X	X	X	X	X	X	X	X	X	X	X
																XKOAC	280	500	Corvallis, Ore.	X	X	X	X									
																XKFJR	263	50	Portland					X	X							
X	X															XKMO	250	500	Tacoma			X	X	X								
																XKPP	248	50	Portland	X												
X	X	X														XKPV	240	5000	Chicago													
																XKWC	484	5000	Davenport													
X																XKWBAP	478	1500	Fort Worth	X			X	X	X	X	X	X	X	X	X	X
																XKGY	380	5000	Schenectady													
X																XKVOO	375	1000	Bristow, Okla	X	X								X	X	X	X
																XKDKA	305	1500	Pittsburgh													
X																XKWOX	280	5000	St. Louis	X	X	X	X	X	X	X	X	X	X	X	X	X

Hours Shown as Submitted by These Stations

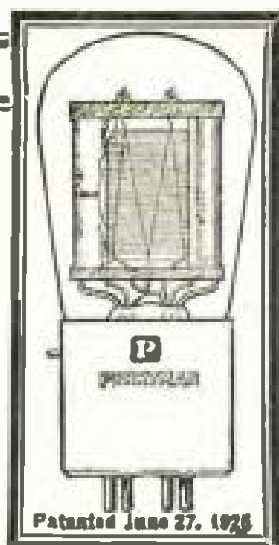
TUESDAY TIME TABLE

ALL TIME TABLES ADJUSTED TO PACIFIC TIME
(X) Indicates Station Is On the Air

10-12 A.M.		12-2 P.M.		2-4 P.M.		4-6 P.M.		STATIONS			6-8 P.M.		8-10 P.M.		10-12 P.M.															
10 00-10 30	10 30-11 00	11 00-11 30	11 30-12 00	12 00-12 30	12 30-1 00	1 00-1 30	1 30-2 00	2 00-2 30	2 30-3 00	3 00-3 30	3 30-4 00	4 00-4 30	4 30-5 00	5 00-5 30	5 30-6 00	CALL	Wave Length Meters	Power In Watts	STATION	6 00-6 30	6 30-7 00	7 00-7 30	7 30-8 00	8 00-8 30	8 30-9 00	9 00-10 00	10 00-10 30	10 30-11 00	11 00-11 30	11 30-12 00
				X	X											X	KFI	467 4000	Los Angeles	X	X	X	X	X	X	X	X	X		
				X	X												KFCR	413 500	Santa Barbara					X	X					
									X	X							KHJ	405 500	Los Angeles		X	X	X	X	X	X	X	X	X	
																X	KMIC	357 500	Inglewood	X	X	X	X	X	X	X	X			
X	X	X	X			X	X	X	X	X	X	X	X	X	X	X	KMTR	370 500	Hollywood	X	X	X	X	X	X	X	X	X	X	X
X	X			X		X	X	X	X	X	X	X	X	X	X	X	KNX	337 750	Los Angeles	X	X	X	X	X	X	X	X	X	X	
				X													KPSN	316 1000	Pasadena	X	X			X	X	X				
				X	X	X	X	X	X	X	X	X	X	X	X		AMB	301 100	Tia Juana, Mex.		X	X	X	X	X	X				
				X	X	X						X	X				KFWC	295 100	San Bernardino							X	X	X	X	
								X	X								KTBS	294 750	Los Angeles		X	X	X	X						
X	X	X	X			X	X	X	X								KFSG	275 500	Los Angeles		X	X	X	X	X					
																	KWYC	263 250	Santa Ana	X	X			X	X	X	X			
									X	X							KFWB	252 500	Hollywood	X	X	X	X	X	X	X	X	X	X	
																	KFSD	246 1000	San Diego	X	X	X	X	X	X	X	X	X	X	
								X	X	X	X						KNRC	238 1000	Santa Monica	X	X	X	X	X	X	X	X	X	X	
X	X	X	X			X	X	X	X	X	X	X	X	X	X		KFON	233 750	Long Beach	X	X	X	X	X	X	X	X	X	X	X
				X	X												KFQZ	226 500	Hollywood	X	X	X	X	X	X	X	X	X		
						X	X									X	KFWO	211 250	Catalina	X	X	X	X							
																X	KFVD	206 500	Venice					X	X	X	X			
																	RLX	508 500	Oakland		X									
X				X	X	X			X	X	X	X	X	X	X		KPO	428 1000	San Francisco	X	X	X	X	X	X	X	X	X	X	X
				X	X	X											KYA	400 1000	San Francisco		X	X					X	X		
						X			X	X	X	X	X	X	X		KGO	361 4000	Oakland		X	X	X	X	X	X				
X																	KQW	333 500	San Jose	X	X	X	X	X						
																X	KTAB	303 1000	Oakland		X	X		X	X	X				
																	KSMR	283 100	Santa Maria		X	X	X	X	X	X				
X	X	X	X	X	X	X			X	X	X	X	X	X	X		KFRC	286 50	San Francisco	X	X	X		X	X	X	X	X	X	X
				X													KFRE	256 100	Berkeley						X	X				
X	X			X	X												KFWH	254 100	Eureka					X	X	X				
						X	X										KFWI	250 500	San Francisco	X	X	X		X	X	X				
																	KZM	240 100	Oakland		X									
X	X	X				X	X	X	X								KMJ	234 80	Fresno						X	X				
																	KJBS	220 5	San Francisco											
																	KGTT	207 50	San Francisco					X	X	X				
X	X	X			X	X	X										KGW	401 1000	Portland	X	X	X	X	X	X	X	X	X	X	X
						X	X										KFOA	454 1000	Seattle		X	X	X	X	X	X				
				X	X											X	CFAC	439 2000	Calgary											
																	KXFF	422 1000	Denver	X	X	X	X	X	X	X	X	X	X	X
								X	X								KHQ	394 1000	Spokane	X	X	X	X	X	X	X				
X	X	X														X	KJR	394 20M	Seattle	X				X	X	X				
																	KLZ	394 500	Denver			X	X	X	X					
X	X	X	X			X	X	X	X				X				KOA	322 5000	Denver		X			X	X					
									X	X							KOIN	319 1000	Portland											
X				X	X	X											KOMO	306 1000	Seattle	X	X	X	X	X	X	X				
																	KSL	300 1000	Salt Lake City	X	X	X	X	X	X					
									X	X							CNRV	291 5000	Vancouver				X		X	X				
																	KOWW	286 500	Walla Walla			X								
																	KFJR	263 50	Portland				X		X					
X	X					X	X	X	X								KMO	250 500	Tacoma					X		X				
									X	X							KFCG	248 50	Portland	X										
																	KFOX	233 1000	Seattle				X	X						
X	X					X		X	X	X	X	X	X	X	X		KYW	535 3500	Chicago	X	X	X	X	X	X					
X	X	X							X	X	X						WOW	526 1000	Omaha				X	X						
X		X		X		X	X									X	WBAP	476 1500	Fl. Worth	X			X	X	X					
		X	X	X				X	X	X	X	X	X	X	X		WGY	380 5000	Schenectady	X	X	X	X	X						
X				X	X	X			X	X	X	X	X	X	X		KVOO	375 1000	Bristow, Okla	X	X						X	X	X	X
				X	X				X	X	X	X	X	X	X		KDKA	309 1000	Pittsburgh					X	X					
X	X	X		X		X	X	X	X	X	X	X	X	X	X		KMOX	280 5000	St. Louis	X	X	X	X	X	X					

Hours Shown as Submitted by These Stations

PERRYMAN RADIO TUBES



Clear glass demonstrating tube, showing Perryman Patented Bridge

To install Perryman Tubes in your set is to insure satisfactory radio reception.

They improve tone and respond to distant signals, allowing ample volume and remarkable freedom from distortion.

“They Cost No More Than Ordinary Radio Tubes”

Made in many different types for every Radio purpose

Guaranteed to Give You Satisfaction

Ask any Perryman Dealer to show you the many features of

***Perryman
Radio Tubes***

Exclusive Wholesale Distributors

C. C. LAWTON CO.

1125 Wall St.

Phone WEStmore 3291

Los Angeles

Here is a Radio Power that Never Runs Down —Direct from Your Electric Light Socket

You'll never have to bother with batteries again when you install a Pemco. This wonderful automatic "A" and "B" Power Unit runs any Radio direct from the electric light socket. The size or make of your Radio makes no difference whatsoever.

Distance and Quality are assured with a Pemco. It is just like new batteries every time you turn your set on.

There are no switches on a Pemco, everything is entirely automatic.

Free Installation—Easy Payments—See Your Dealer today—Insist on a Pemco—No other unit has the many advance and exclusive features.

Distributors

Pacific Wholesale Radio, Inc.

1320 S. San Pedro, Los Angeles

Sherman, Clay & Co.
948 Santee St., Los Angeles

The Electric Corp.
1050 Santee St., Los Angeles

Pemco

Automatic

"A" and "B"

Power Unit



THURSDAY TIME TABLE

ALL TIME TABLES ADJUSTED TO PACIFIC TIME
(X) Indicates Station Is On the Air

10-12 A.M.		12-2 P.M.		2-4 P.M.		4-6 P.M.		STATIONS				6-8 P.M.		8-10 P.M.		10-12 P.M.															
10 00-10 30	10 30-11 00	11 00-11 30	11 30-12 00	12 00-12 30	12 30-1 00	1 00-1 30	1 30-2 00	2 00-2 30	2 30-3 00	3 00-3 30	3 30-4 00	4 00-4 30	4 30-5 00	5 00-5 30	5 30-6 00	CALL	Wave Length Meters	Power in Watts	STATION	6 00-6 30	6 30-7 00	7 00-7 30	7 30-8 00	8 00-8 30	8 30-9 00	9 00-9 30	9 30-10 00	10 00-10 30	10 30-11 00	11 00-11 30	11 30-12 00
																X K F I	467	4000	Los Angeles.....	X	X	X	X	X	X	X	X	X	X	X	
			X	X												X K F C R	413	500	Santa Barbara....					X	X						
																X K H J	405	500	Los Angeles.....		X	X	X	X	X	X	X	X	X	X	
																X K M I C	397	500	Inglewood.....	X	X	X	X	X	X	X	X	X	X		
			X	X												X K F B C	380	50	San Diego.....					X	X	X	X	X	X		
X	X						X	X	X	X	X	X	X	X	X	X K M T R	370	500	Hollywood.....	X	X	X	X	X	X	X	X	X	X	X	X
X	X	X					X	X	X							X K N X	337	750	Los Angeles.....	X	X	X	X	X	X	X	X	X	X	X	X
																X K P S N	316	1000	Pasadena.....	X	X			X	X	X					
			X	X	X	X	X	X	X	X	X	X	X	X	X	X A M B	301	100	Tia Juana, Mex..												
			X	X												X K F W C	285	100	San Bernardino..							X	X	X	X	X	X
							X	X								X K T B I	294	750	Los Angeles.....		X	X	X	X							
X	X	X	X				X	X	X	X						X K F S G	275	500	Los Angeles.....	X	X	X	X	X	X	X	X	X	X	X	X
																X K W T C	263	250	Santa Ana.....	X	X			X	X	X	X				
																X K F W B	252	500	Hollywood.....	X	X	X	X	X	X	X	X	X	X	X	X
																X K F S D	246	1000	San Diego.....	X	X	X	X	X	X	X	X	X	X	X	X
								X	X	X						X K N R C	238	1000	Santa Monica...	X	X	X	X	X	X	X	X	X	X	X	X
X	X	X	X				X	X	X	X	X	X	X	X	X	X K F O N	233	750	Long Beach.....	X	X	X	X	X	X	X	X	X	X	X	X
																X K F Q Z	226	500	Hollywood.....	X	X	X	X	X	X	X	X	X	X	X	X
																X K F W O	211	250	Catalina.....	X	X	X	X	X	X						
												X	X	X	X	X K F V D	205	500	Venice.....					X	X	X	X				
																X K F B K	130	100	Sacramento.....					X	X	X	X				
																X K L X	508	500	Oakland.....			X									
X			X		X	X					X	X	X	X	X	X K P O	428	1000	San Francisco....	X	X	X	X	X	X	X	X	X	X	X	X
																X K Y A	400	1000	San Francisco....	X	X										
																X K G O	391	4000	Oakland.....	X	X	X		X	X	X	X	X	X	X	X
X																X K Q W	333	500	San Jose.....	X	X	X	X								
																X K T A B	303	1000	Oakland.....		X	X									
																X K S M R	283	100	Santa Maria....		X	X	X	X	X	X	X	X	X	X	X
X	X	X	X	X	X	X					X	X	X	X	X	X K F R C	288	50	San Francisco....	X	X	X		X	X	X	X	X	X	X	X
																X K R E	258	100	Berkeley.....					X	X	X	X				
																X K F U S	256	50	Oakland.....												
X	X															X K F W H	254	100	Eureka.....					X							
																X K F W I	250	500	San Francisco....	X	X	X		X	X	X	X				
																X K Z M	240	100	Oakland.....		X										
																X K M J	234	50	Fresno.....							X	X				
																X K F Q U	231	250	Holy City, Calif.					X	X						
X	X	X														X K J B S	220	5	San Francisco....												
																X K G T T	207	50	San Francisco....												
X	X	X														X K G W	491	1000	Portland.....	X	X		X	X	X	X	X				
X																X W B A P	478	1500	Fort Worth.....	X			X	X	X	X	X				
																X K F O A	454	1000	Seattle.....		X	X	X	X	X	X	X	X	X	X	X
																X C F A C	435	2000	Calgary.....	X	X			X	X	X					
																X K H Q	394	1000	Spokane.....	X	X					X	X				
X	X	X														X K J R	384	20M	Seattle.....	X						X	X	X	X	X	X
																X K O I N	319	1000	Portland.....						X	X	X	X			
																X K O M O	306	1000	Seattle.....					X	X						
																X K O A	322	5000	Denver.....												
																X K S L	300	1000	Salt Lake City...	X	X	X	X	X							
																X K O W W	285	500	Walla Walla....			X		X	X	X	X	X	X	X	X
																X K G U	270	500	Honolulu.....									X	X	X	
																X K F J R	263	50	Portland.....					X	X	X	X	X	X	X	
X	X															X K M O	250	500	Tacoma.....						X	X	X	X			
X	X															X K V W	535	3500	Chicago.....	X	X	X	X	X	X	X	X				
																X X W O W	526	1000	Omaha.....	X	X	X	X	X	X	X	X	X	X	X	X
																X X W G Y	380	5000	Schenectady....	X	X	X	X	X	X	X	X	X	X	X	X
X																X K V O O	378	1000	Brinkow, Okla.	X	X								X	X	X
																X K D K A	309	1000	Pittsburgh.....					X	X	X					

Hours Shown as Submitted by These Stations



Rear view above shows large compartment with ample space for batteries, battery charger, or battery eliminator, which is entirely concealed from view. Back is open for ventilation of batteries.



(Pat. Applied For)
**Model 200, with 22-inch
 Cone Loudspeaker**

This Windsor Cone Loudspeaker Console is equipped with a 22-inch Windsor Cone Loudspeaker. Its top is 29 in. x 17 in. and is 29 in. high. The battery shelf provides ample space for batteries, charger, battery eliminator and other equipment. Beautifully finished in either Mahogany or Walnut color.



Above is shown the Cone Loudspeaker, with its Panel, which is quickly and easily removable, allowing access to all batteries, battery charger, battery eliminator, or other equipment and wiring.

Model 200
\$35
 Console with Cone Loudspeaker
 Ready for Set and Batteries

A Revelation in Radio Reproduction



Model 210
 22-inch Cone Loudspeaker with Panel and easel back

\$18⁰⁰

(Pat. applied for)

beauty, just as it entered the microphones.

...

This 22-inch Windsor Cone Loudspeaker will reproduce the softest crooning lullaby in a softly lighted room, or the full throated march music of a band in an auditorium—both with perfect fidelity of sound and tone. The Windsor Cone Loudspeaker Console is the greatest value in the world of radio. When compared with the average cost of cone-type loudspeakers of even similar size, the cost of the complete Windsor-cone loudspeaker and console—is amazingly low.

...

The Windsor Cone and Horn Loudspeakers, combined with attractive pieces of furniture in many models, are being demonstrated by recognized dealers everywhere. Go to your dealer today and examine this astonishing new Cone Loudspeaker Console. If he happens not to have one, write to us and we will tell you the name of the nearest store at which you can see and hear one.

...

NOTE TO DEALERS

Write or wire today for details of the highly profitable Windsor selling line.

At last—a cone loudspeaker that reproduces all the tones as they are broadcast. From the deep voiced tuba of an orchestra to the softest note of a vocal solo—every tone—every sound is reproduced in all its

As a piece of furniture, the Windsor Cone Loudspeaker Console is of such manifest high quality and attractive design as to be a welcome addition to any home. Finished in Mahogany or Walnut color.

WINDSOR FURNITURE CO.

World's Largest Manufacturers and Originators of Loudspeaker Consoles

1420 Carroll Avenue, Chicago, Illinois
 Los Angeles Branch: 917 Maple Avenue

R. D. 29

WINDSOR FURNITURE COMPANY.
 Electrical Department,
 917 Maple Ave., Los Angeles.

Send me FREE and without obligation circulars of the Windsor line of Cone and Horn Loudspeakers combined with pieces of furniture, and name of nearest dealer.

Name.....
 Address.....
 Dealer's Name.....
 City.....State.....

FRIDAY TIME TABLE

ALL TIME TABLES ADJUSTED TO PACIFIC TIME
(X) Indicates Station is On the Air

10-10:30	10-12 A.M.		12-2 P.M.		2-4 P.M.		4-6 P.M.		STATIONS				6-8 P.M.		8-10 P.M.		10-12 P.M.																		
	10:30-11:00	11:00-11:30	11:30-12:00	12:00-12:30	12:30-1:00	1:00-1:30	1:30-2:00	2:00-2:30	2:30-3:00	3:00-3:30	3:30-4:00	4:00-4:30	4:30-5:00	5:00-5:30	5:30-6:00	CALL	Ave Length Meters	Power in Watts	STATION	6:00-6:30	6:30-7:00	7:00-7:30	7:30-8:00	8:00-8:30	8:30-9:00	9:00-9:30	9:30-10:00	10:00-10:30	10:30-11:00	11:00-11:30	11:30-12:00				
	X	X	X													KALB	317	1000	Los Angeles																
				X	X											KFI	467	4000	Los Angeles	X	X	X	X	X	X	X	X	X	X	X	X	X			
				X	X											KFCR	413	500	Santa Barbara				X	X											
																KHJ	405	500	Los Angeles		X	X		X	X	X	X								
																KMBC	387	500	Inglewood	X	X	X	X	X	X	X	X								
																KFBC	380	50	San Diego					X	X	X	X								
																KMTR	370	500	Hollywood	X	X	X	X	X	X	X	X	X	X	X	X	X	X		
	X			X												KKNX	337	750	Los Angeles	X	X	X	X	X	X	X	X	X	X	X	X	X	X		
																KPSN	318	1000	Pasadena	X	X			X	X	X									
																AMB	301	100	Tia Juana, Mex.			X	X	X	X	X	X								
																KFWC	295	100	San Bernardino	X															
																KTBI	294	750	Los Angeles	X	X	X	X	X	X										
	X	X	X	X												KFSG	275	500	Los Angeles		X	X	X	X	X	X	X								
																KFWB	252	500	Hollywood	X	X	X	X	X	X	X	X	X	X	X	X	X	X		
																KFSD	246	1000	San Diego	X	X	X	X	X	X	X	X	X	X	X	X	X	X		
																KNRC	238	1000	Santa Monica	X	X	X	X	X	X	X	X	X	X	X	X	X	X		
	X	X	X	X	X	X										KFON	233	750	Long Beach	X	X	X	X	X	X	X	X	X	X	X	X	X	X		
																KFQZ	226	500	Hollywood	X	X	X	X	X	X	X	X	X	X	X	X	X	X		
																KFWD	211	250	Catalina	X	X	X	X												
																KFVN	205	500	Ventura					X	X	X	X								
																KLAA	200	500	San Jose					X	X	X	X								
	X			X	X	X										KLPO	428	1000	San Francisco	X	X	X	X	X	X	X	X	X	X	X	X	X	X		
																KYA	400	1000	San Francisco		X	X		X	X	X	X	X	X	X	X	X	X		
																KGO	361	4000	Oakland	X	X	X		X	X										
																KQW	333	500	San Jose	X	X	X	X												
																KTAB	303	1000	Oakland			X		X	X	X	X								
																KSMR	283	100	Santa Maria		X	X	X	X	X	X	X								
X	X	X	X	X	X	X										KFRC	268	50	San Francisco	X	X	X		X	X	X	X	X	X	X	X	X			
X	X															KFUS	256	50	Oakland					X	X										
																KFRE	256	100	Berkeley					X	X	X	X								
X	X															KFWH	254	100	Eureka					X	X	X	X								
																KFWI	250	500	San Francisco	X	X	X		X	X	X	X								
																KZM	240	100	Oakland		X														
																KMJ	234	50	Fresno				X	X	X	X									
X	X	X														KJBS	220	5	San Francisco																
																KTVU	207	50	San Francisco																
A	A	A														KLON	451	2000	Portland	A	A	A	A	A	A	A	A	A	A	A	A	A	A		
																KFOA	454	1000	Seattle	X	X	X	X	X	X	X	X	X	X	X	X	X	X		
																CFAC	435	2000	Calgary	X	X														
																KFXF	422	1000	Denver		A	A	A	A	X	X	X	X	X	X	X	X	X		
																KHQ	394	1000	Spokane	X	X	X	X					X	X	X	X	X	X		
																KLZ	384	500	Denver	A	X														
X	X	X														KJRR	348	20M	Seattle	X								X	X	X					
																KOA	322	5000	Denver	X	X	X	X	X	X	X	X								
																KOIN	318	1000	Portland									X	X	X	X				
X																KOMO	306	1000	Seattle		X	X	X	X				X	X						
																KSL	300	1000	Salt Lake City	X	X	X	X	X	X	X									
																CNRV	291	5000	Vancouver, B. C.		X	X	X	X	X	X	X	X	X	X	X	X	X	X	
																KOWW	285	500	Walla Walla		X			X	X	X	X	X	X	X	X	X	X		
																KOAC	280	500	Corvallis, Ore.		X	X	X	X											
X	X	X														KGU	270	500	Honolulu					X	X	X									
X	X															KMO	250	500	Tacoma									X	X	X	X				
																KFOV	227	1000	Seattle					X	X	X	X	X	X	X	X	X	X		
A	A															KWTV	221	1000	Portland	A	A	A	A	A	A	A	A	A	A	A	A	A	A		
																XWGV	380	5000	Schenectady	X	X	A	X	X	X										
X																KVOO	375	1000	Bristow, Okla	X	X							X	X	X	X	X	X		
																KDKA	309	1000	Pittsburgh																
X	X	X														KMOX	260	8000	St. Louis			X	X	X	X										

Hours Shown as Submitted by These Stations

Bring Your Radio Set Up-To-Date With a CeCo Mogul Power Tube



*No Other Expense
No Rewiring*



CeCo Mogul Tubes are equipped with a special base designed to allow the addition of such B and C battery as may be required for its proper operation. This tube will allow output of power sufficient to operate any loud speaker without "overloading" the tube even when receiving within a very short distance from a powerful broadcasting station.



Any CeCo dealer will supply you with CeCo tubes made especially for your radio set. CeCo tubes cost no more. You must be satisfied—that's guaranteed!



A. J. Tobey Co.

15th and Hope Sts. Westmore 4038
Some of the CeCo Dealers in Southern California

LOS ANGELES

- J. M. Andrews
209 West 18th St.
- Cutler Radio
910 North Western Ave.
- Walker Radio
5815 South Vermont
- Glen H. Demer
6292 South Vermont
- Collins Hardware Co.
3425 South Vermont
- H. H. Walker
1321 Venice Blvd.
- Philco Sales and Service
1514 South Hope St.
- Tivoli Radio Shop
420 South Central

HOLLYWOOD

- Barrows-Conkright
5545 Sunset Blvd.

- Atwater Radio Shop
3208 Glendale Blvd.
- Hetzel Radio Service
8303 Santa Monica Blvd.

PASADENA

- Thomas & Summerville
41 North Broadway
- Webster Electric Garage
100 East Union Ave.
- BREA, Bennet's Radio
- GARDEN GROVE, W. E. Ashley
- VAN NUYS, Van Nuys Music Co.
6112 Sherman Way
- LA HABRA, C. Perry
117 West Center St.
- HERMOSA BEACH, C. Alander
510 Camino Real
- ANAHEIM, Caverley Radio
217 West Center St
- MONROVIA, Mack Music Co.



SATURDAY TIME TABLE

ALL TIME TABLES ADJUSTED TO PACIFIC TIME
(X) Indicates Station Is On the Air

10-12 A.M.		12-2 P.M.		2-4 P.M.		4-6 P.M.		STATIONS				8-8 P.M.		8-10 P.M.		10-12 P.M.																
10:00-10:30	10:30-11:00	11:00-11:30	11:30-12:00	12:00-12:30	12:30-1:00	1:00-1:30	1:30-2:00	2:00-2:30	2:30-3:00	3:00-3:30	3:30-4:00	4:00-4:30	4:30-5:00	5:00-5:30	5:30-6:00	CALL	Wave Length Meters	Power in Watts	STATION	6:00-6:30	6:30-7:00	7:00-7:30	7:30-8:00	8:00-8:30	8:30-9:00	9:00-9:30	9:30-10:00	10:00-10:30	10:30-11:00	11:00-11:30	11:30-12:00	
												X	KFI	467	4000	Los Angeles			X	X	X	X	X	X	X	X	X	X	X	X	X	
		X	X													KFCR	413	500	Santa Barbara			X	X	X								
																KHJ	405	500	Los Angeles			X	X	X	X	X	X	X	X	X	X	X
															X	KMIC	387	500	Inglewood			X	X	X	X	X	X	X	X	X	X	X
		X	X													KFBC	380	50	San Diego						X	X	X	X	X	X	X	X
X	X	X			X	X	X	X	X	X	X					KMTR	370	500	Hollywood			X	X	X	X	X	X	X	X	X	X	X
X			X		X	X	X	X	X	X	X			X	KNX	337	750	Los Angeles			X	X	X	X	X	X	X	X	X	X	X	X
		X														KPSN	316	1000	Pasadena			X	X		X	X	X					
		X	X	X	X	X	X	X	X	X	X	X	X	X		AMB	301	100	Tia Juana, Mex.													
																KSMR	283	100	Santa Maria					X								
X	X	X	X						X	X	X	X				KFSG	275	500	Los Angeles			X	X	X	X	X	X	X	X	X	X	X
																KWTC	263	250	Santa Ana			X	X		X	X	X	X			X	X
																KFWB	252	500	Hollywood			X	X	X	X	X	X	X	X	X	X	X
									X	X	X					KFSD	246	1000	San Diego			X	X	X	X	X	X	X	X	X	X	X
									X	X	X	X				KNRC	238	1000	Santa Monica			X	X	X	X	X	X	X	X	X	X	X
X	X	X	X		X	X		X	X	X	X	X	X	X		KFON	233	750	Long Beach			X	X	X	X	X	X	X	X	X	X	X
		X	X													KFQZ	226	500	Hollywood			X	X	X	X	X	X	X	X	X	X	X
															X	KFYF	214	25	Oxnard, Calif.			X										
					X	X			X	X	X					KFWO	211	250	Catalina			X	X	X	X							
															X	KFVD	205	500	Venice						X	X	X	X				
																KFBK	535	100	Sacramento					X	X	X	X					
		X		X	X				X	X	X	X				KLX	508	500	Oakland				X									
	X		X	X	X				X	X	X	X				KPO	428	1000	San Francisco			X	X	X	X	X	X	X	X	X	X	X
			X	X	X											KYA	400	1000	San Francisco			X	X						X	X		
		X						X	X	X	X					KGO	381	4000	Oakland						X	X	X	X	X	X	X	X
X																KQW	333	500	San Jose			X	X									
																KTAB	303	1000	Oakland				X									
		X	X	X	X				X	X	X	X	X	X		KFRC	288	50	San Francisco			X	X	X		X	X	X	X	X	X	X
		X													X	KRE	256	100	Berkeley													
						X	X									KFUS	256	50	Oakland			X	X									
																KZM	240	100	Oakland			X										
																KMJ	234	50	Fresno							X	X					
																KFQU	231	250	Holy City, Calif.						X	X						X
X	X		X				X									KFWH	225	100	Eureka													
X	X	X					X	X	X	X						KJBS	220	5	San Francisco													
			X	X												KGTT	207	50	San Francisco													
X	X	X			X	X										KGW	491	1000	Portland			X	X	X	X		X	X	X	X	X	X
						X						X				KFOA	454	1000	Seattle			X	X	X	X	X	X	X	X	X	X	X
																KFXF	422	1000	Denver			X	X	X	X	X	X	X	X	X	X	X
																CKCD	410	2000	Vancouver, B.C.					X	X							
X							X	X								KHQ	394	1000	Spokane			X	X									
X	X	X												X	KJR	384	20M	Seattle			X					X	X	X	X	X	X	X
																KLZ	384	500	Denver					X	X	X						
	X	X	X	X												KOA	322	5000	Denver									X	X	X	X	X
									X	X						KOIN	318	1000	Portland													
			X	X	X											KOMO	308	1000	Seattle			X	X	X	X	X						
							X	X								KSL	300	1000	Salt Lake City			X	X	X	X	X	X	X	X	X	X	X
									X	X	X					KFJR	263	50	Portland													
X	X						X	X	X	X						KMO	250	500	Tacoma						X	X	X	X				
X	X						X	X	X	X	X	X	X	X	X	KYW	530	5000	Chicago			X	X		X	X						
	X								X			X	X			WFAA	476	500	Dallas, Tex.			X	X				X	X				
X		X		X	X									X	WBAP	478	1500	Fort Worth			X			X	X	X						
			X	X	X	X	X									WOAI	394	5000	San Antonio													
							X	X				X	X	X		XWGY	380	5000	Schenectady						X	X						
X				X	X	X						X	X	X	X	KVOO	375	1000	Bristow, Okla.			X	X						X	X	X	X
																WSMB	318	500	New Orleans			X	X	X	X							
							X	X	X	X	X	X	X	X	X	KDKA	308	1000	Pittsburgh			X	X		X							
X			X	X	X	X	X	X	X	X	X	X	X	X	X	KMOX	280	5000	St. Louis			X	X	X	X	X	X	X	X	X	X	X

Hours Shown as Submitted by These Stations

\$5 DOWN
PUTS A



PHILCO
SOCKET POWER

In Your Home

for a lifetime of service

Installed free in city

Satisfaction Guaranteed

PHILCO SALES & SERVICE Co.

1514 South Hope St. Phone WEStmore 9065

OTHER PRODUCTS WE HANDLE:

Philco Automotive Storage Batteries, CeCo Tubes, Ray-O-Vac Dry Batteries. Repair All Makes of Storage Batteries, Starters and Generators.

**MAIL THIS
COUPON
or Phone
WE. 9065**

for FREE DEMONSTRATION in your home. It places you under no obligation.

Name _____

Address _____

Phone _____

Make of Radio Set _____

12

You need not buy an expensive Radio to get 100% Radio Performance!



We believe that the U. S. Navy circuit, as incorporated in Stewart-Warner Matched Unit Radio, is the most efficient receiving circuit ever developed. Reception records made by thousands of Stewart-Warner owners throughout the United States only strengthens this belief.

The Stewart-Warner model 300, a five tube, three dial control model, selling at the modest price of \$52.50, less accessories, has made reception records that are almost unbelievable. It is a real radio at a price within the reach of everyone.

And if you want a more expensive model . . . something in handsome cabinet work . . . you'll find it also in the Stewart-Warner line.



Los Angeles Dealers

- ATWATER RADIO & ELEC. CO.
1200 Glendale Blvd.
- CHAPMAN HOUSE SALES CO.
637-70 N. Figueroa St.
- DEAN S. BARRIS
2100 S. Vermont Ave.
- BEASON HARDWARE COMPANY
215 South Broadway
- BIRDSON & BUSHARD
3127 W. Adams St.
- DOE FINLEY
2007 West Anaheim
- A. W. COOPER
1815 W. 5th St.
- FRANK W. HARRISBUDG
8211 S. Vermont
- HARRY SAYVO
223 West Jefferson St.
- HOLLAND ELECTRIC SHOP
1227 Pasadena Ave
- NINES RADIO
1822 North Broadway
- INTERPHONE ELECTRIC CO.
1516 Monroe Vista St.
- MANCHETER RADIO CO.
1322 E. Washington Ave
- MANNAK BAY & RAD. CO.
115 Belmont Blvd
- GILBSON & NELSON
429 Ardine Blvd
- CORTON & BORTON
2311 A Broadway
- POSTER RADIO SALES CO
1817 E. 50th St.
- CHAS. A. GOINSBERG
4543 N. Normandie
- ALBIO ELECTRIC SHOP
702 S. Vermont Ave.
- A. C. SIMMER
413 Pasadena Ave.

- TRAYER ELECTRIC CO.
290 Whittier Blvd.
- WISER RADIO AND ELEC. CO.
4732 Whittier Blvd.
- WEST BAYE RADIO & ELEC.
2528 N. Main St.
- WEST STATES ELECT. CO.
1781 North Broadway

Hollywood Dealers

- BARRORS & COOKWRIGHT
8424 Pioneer Blvd.
- BOBART ELECTRIC SHOP
9716 Pioneer Blvd.
- BOBART'S ELECTRIC SHOP
6706 Maple View Ave.
- SLOW ELECTRIC CO.
1010 Hollywood Blvd.
- H. D. WATFIELD & SON
3709 N. Vermont Ave
- WELLSBEE RADIO SHOP
2800 Malibu Ave.

Southern California Dealers

- ALMARENA, Latta & Franklin
441 W. Main
- ABANISH, Bennett's Radio Shop
221 Center St.
- ARTERIA, Wm. S. Hayes
127 W. Main
- BARTON, Barton Radio Shop
Radio Shop
- BELOWFORD, Stewart-Warner
Purity and Vision Res
- BREA, Spencer's Radio Shop
129 N. Broadway Ave
- CALETICO, ON Electric Co.
215 Grand St.
- CRATZBURY, C. H., Proctor & See
CHING, Wood Radio Company
614 North St.
- GRULA VISTA, Proctor & Proctor
807 Third St.

- COLTON, H. G. Shaw
609 S. Broadway St.
- COBSON, Model Electric Co.
150 E. Main St.
- CONRAD, Curvaco Radio Shop
1911 Orange Ave.
- COVINA, Harold R. Hamer
118 Calaver St.
- CULVER CITY, Culver City Radio & Elec.
9715 Washington Blvd.
- EAGLE ROCK, Weaver & King
2112 Radio Blvd Blvd
- EL CENTRO, Bennett & See
Broadway and Main St.
- EL SEBUENDO, R. W. McArthur
116 Grand Ave.
- EL SORTE, Weaver & King
175 Sierra View, No.
- ENCINITAS, Lee & Rogers
- ESCONDIDO, Dierkin's Electric Shop
112 S. Main

Any Stewart-Warner dealer listed in this advertisement will gladly demonstrate, Matched Unit Radio in your own home. Call on the dealer nearest you for particulars regarding the easy terms on which Stewart-Warner radio can be purchased.

Stewart-Warner Products Service Station
[Wholesale Distributors Stewart-Warner Radio]
1366 South Figueroa Street - LOS ANGELES
811 Front Street (near 'F') - SAN DIEGO

- GARDENA, Geo Sears
728 W. 14th St
- GLENN, E. Alexander Radio Shop
Alexander Theatre Arcade
518 N. Grand Blvd
- GLENNDALE, Wilcox Holmes
202 E Broadway
- GLENDORA, James M. Reed
HUNTINGTON PARK, H. L. (Frank)
1100
- LYNWOOD, H. S. Davis
609 S. Broadway St.
- COMPTON, Model Electric Co.
150 E. Main St.
- CONRAD, Curvaco Radio Shop
1911 Orange Ave.
- COVINA, Harold R. Hamer
118 Calaver St.
- CULVER CITY, Culver City Radio & Elec.
9715 Washington Blvd.
- EAGLE ROCK, Weaver & King
2112 Radio Blvd Blvd
- EL CENTRO, Bennett & See
Broadway and Main St.
- EL SEBUENDO, R. W. McArthur
116 Grand Ave.
- EL SORTE, Weaver & King
175 Sierra View, No.
- ENCINITAS, Lee & Rogers
- ESCONDIDO, Dierkin's Electric Shop
112 S. Main

- PASO ROBLES, R. C. Hester
PICO, Pass Radio Shop
- POSDEN, George W. Hall
125 E Third St
- REDWOOD, L. W. Lansing
215 Diamond St.
- REDLAND, J. L. Yeast
108 W. Union Ave.
- RIVERSIDE, Frank W. Chapp
201 Market St.
- SAN BERNARDINO, Harry, Bert & Gary
304 Front St.
- SAN DIEGO
"Radio Smith"
1201 Elm St.
"Gutter Radio"
2025 Broadway Ave.
5000 Van Dyke
800 N. Broadway
722 San Diego Ave.
- SAN FERNANDO, White House
SAN LEUIS OBISPO, Clear Elm. Co.
100 E. Main St.
- SAN PEDRO, San Pedro Pure. Co.
225 W. Main St.
- SANTA ANA, Shaver's Music Store
115 N. Main St.
- SANTA BARBARA, Val Foster
732 Main St.
- SANTA MARIA, Ford & Smart
119 E. Main St.
- SANTA MONICA, I. C. Smith
625 Windsor
- SANTA PAULA, The Model Shop
104 W. Main St.
- SATIDAY, H. H. Wright
West and D St.
- TAFT, L. H. Bird
810 1/2 Main St.
- TORONTO, BEVADA
Tonopah Electric Company
- UPLAND, Leo W. Ross
VENICE, Stewart-Warner Radio
Market
- 1425 Washington Blvd.
1810 North St.
1810 North St.
Whittier, H. C. Dierkin
125 S. Broadway
WILMINGTON, F. P. Chappin
212 W. Anaheim St.



LESLIE ADAMS
Announcer

Los Angeles, California—467 Meters

KFI

4000 WATTS—640 KILOCYCLES

Radio Central Super-Station of Earle C. Anthony, Inc.
1000 S. Hope. Phone WE. 0331. After P. M., WE. 0337
Class "B" 5000-Watt W. E. Sta., Operating on 4000 Watts
ROBERT HURD, Program Manager

DAILY EXCEPT SUNDAY—

5:30 p. m.—Musical Program.
6:15 p. m.—Radiotorial.
6:30 p. m.—Vest Pocket.

MONDAY, WEDNESDAY AND FRIDAY—

KFI Woman's Interest Department—Under the Direction of Agnes White.
10:00 to 10:20 p. m.—Talk on Face and Scalp Hygiene, by Georgia O. George.
10:20 to 10:40 a. m.—Furnishings for the home by Agnes White, director of the Dept.
10:40 to 11:00 a. m.—Betty Crocker—Gold Medal Flour Home Service Talks.
11:10 to 11:30 a. m.—Food talks by Agnes White.

WEEK COMMENCING SUNDAY, JANUARY 30, 1927

SUNDAY, JANUARY 30—

10:00 a. m.—Morning services, direction of Los Angeles Church Federation.
2:45 p. m.—San Francisco Symphony Orchestra. Alfred Hertz, conductor, broadcast simultaneously by KFI, KPO and KGO, and presented by the Standard Oil Co. of California.
8:00 p. m.—Program by the Russian Academy of Musical Art—Boris Myronoff, piano; Mischa Spigal, violin; Alex Borrisoff, cello, in a classical program.
7:00 p. m.—Aeolian Organ Recital. Alex Reilly at the console. Grace Riesland, soloist
8:00 p. m.—Packard Classic Hour, arranged by Carl Edward Hatch.
9:00 p. m.—Bob Bottger and his Venetian Dance Orchestra.
10:00 p. m.—Packard Six Orchestra, Bill Hennessy, director.

MONDAY, JANUARY 31—

7:00 p. m.—Starke Sisters, duets and harmony singers.
8:00 p. m.—Cello and Harp Recital by Annie Timmer and Louise Klos.
9:00 p. m.—Ruth Paletherpe and Lewis A. Kerwin in a joint recital.
10:00 p. m.—Meiklejohn Bros. program, with vaudeville artists.

TUESDAY, FEBRUARY 1—

7:00 p. m.—Jack Martin's Hawaiian Trio; Clark Sisters.
8:00 p. m.—Cattone String Quartet, with Gretchen Garrett and Will Carroway.
9:00 p. m.—Men's Glee Club of the University of California.
10:00 p. m.—Weekly session of the Azure Music Club.

WEDNESDAY, FEBRUARY 2—

7:00 p. m.—Ray Fisher's Original Victoriana Dance Orchestra.
7:30 p. m.—Nick Harris—Detective Stories.
7:45 p. m.—William MacDougall, Scotch Comedian.
8:00 p. m.—James Burroughs, tenor, and the Calpel Trio.
9:00 p. m.—Manrova Trio and Louise Klos, soprano, and Hugh Wellington, baritone.
10:00 p. m.—Sunset Instrumental Quartet, with Dorothy Ruth Miller, concert pianist; La Mont Stetzer, bass baritone.

THURSDAY, FEBRUARY 3—

7:00 p. m.—University of Southern California Program.
8:00 p. m.—KFI Drama Hour; Kitty Short, soprano.
9:00 p. m.—Program arranged by Selwyn Harris: instrumental music.
10:00 p. m.—Johnston and Farrell's Music Box Hour.

FRIDAY, FEBRUARY 4—

11:10 to 11:30 a. m.—Food Talks by Agnes White.
7:00 p. m.—Program by Paul Roberts and Leslie Adams.
8:00 p. m.—Aeolian Organ Recital, Alex Reilly at the console.
9:00 p. m.—Alma Frances Gordon, contralto; La Mont Stetzer, bass baritone; Bilezza Trio, lilyan Ariel, pianist.
10:00 p. m.—Packard Ballad Hour; Ruth and Dolores Paletherpe, duets, and Lewis A. Kerwin, accompanist.

SATURDAY, FEBRUARY 5—

7:30 p. m.—Felipe Delgado and Edna Clark Muir, Media Hora Espanola.
8:00 p. m.—Grand Opera Program—Virginia Fahlrl, Maurine Dyer, Robert Hurd, Mission Bell Orchestra, Pryor Moore, director. Los Angeles Soap Company Broadcast simultaneously by KFI, Los Angeles, and KPO, San Francisco.
9:00 p. m.—Edna Bilea, contralto; Margaret Craven, soprano.
10:00 p. m.—Packard Radio Club.
11:00 p. m.—KFI Midnight Frolic.

Copyright, 1927, Earle C. Anthony, Inc.

Program Published as Submitted by the Station.

for **Kellogg, Gilfillan**
 and these great accessories
Sherman, Clay & Co!



Advantageous
 territory
 still open
 to live
 dealers—
Investigate!

Coast Distributors—

Sherman, Clay & Co.

Via Distributors

- Los Angeles: 10th and Santee Sts.
- San Francisco: 536 Mission St.
- Oakland: 5175 Telegraph Ave.
- Portland, 487 Glisan St.
- Seattle: Republican St. and Terry Ave.
- Spokane: 330 West Sprague Ave.

- Kellogg**
receivers
- Gilfillan**
receivers
- O'Neil**
cone loudspeakers
- Rola**
cone speakers
- Victor**
loudspeakers
- Sherman**
batteries
- Westinghouse**
"Auto-Power"
A-Battery
eliminators
- Silver Beauty**
chargers
- Pemco**
power units
- R. C. A.**
radiotrons
- Eveready**
batteries
- Philco**
batteries and
socket powers

.....

For information as to DEALER TERRITORY clip and mail this
 to nearest Sherman Clay & Co. wholesale branch. (R. D.)

Name _____

Address _____

Interested in _____



"Little John Daggett"
Announcer

Los Angeles, California—405.2 Meters

KHJ

500 WATTS—740 KILOCYCLES

Times Bldg., First and Broadway, Los Angeles
Owned and Operated by Los Angeles Times

JOHN S. DAGGETT, Manager and Program Announcer
Phone ME. 0700

"Kindness, Happiness and Joy"

NIGHTLY EXCEPT SUNDAY AND MONDAY—
7:30 p. m.—Scripture Reading.

WEEK COMMENCING SUNDAY, JANUARY 30, 1937

SUNDAY, JANUARY 30—

- 10:00 a. m.—Sermon from the studio of KHJ by Dr. H. C. Culbertson.
10:30 a. m.—Organ recital and morning service from the First Methodist Episcopal Church.
7:00 to 8:00 p. m.—Evening services from the First Methodist Episcopal Church.
8:00 to 10:00 p. m.—News items. Program, including the KHJ Trio, Burr McIntosh, the Cheerful Philosopher; Frederick MacMurray, viola and the Orpheus Four Male Quartet.
8:00 p. m.—Nightly weather report.

MONDAY, JANUARY 31—

- 2:30 p. m.—Weekly bridge game.
6:30 to 7:30 p. m.—Children's hour. The weekly visit of the Radio Fairies. Queen Titania and her Sandman; Betty Jane Uhl, pianist. Charles D. McRoy's Playground Harmonica Band and George Kerr, 12-year-old mandolin soloist.
7:40 p. m.—H. M. Robertson will speak on "Dogs."
8:00 to 10:00 p. m.—News items. De luxe program.
10:00 to 11:00 p. m.—Dance program by the Los Angeles Railway Orchestra.

WEDNESDAY, FEBRUARY 2—

- 2:30 p. m.—Weekly garden talk by Fred C. McNabb.
6:30 to 7:30 p. m.—Children's program including Dick Winslow, screen juvenile reporter; Vivian Marple, "Blue Bell of KHJ;" Glenn Flitz, "Optimistic Mascot;" Patricia Eccleston, "Little Daffodil;" Lo's Jane Campbell, "Brown Eyes;"
7:40 p. m.—Dr. Mars Baumgardt will talk on "Astronomy."
8:00 to 10:00 p. m.—News items. De luxe program. 9:00 p. m.,
10:00 to 11:00 p. m.—Dance music by the Jinnistan Vale Orchestra.

THURSDAY, FEBRUARY 3—

- 6:30 to 7:30 p. m.—Children's hour. Presenting Joanne De Bard, "Bonnie Jeann's;" June Brandon, contralto; Dickie Brandon, screen juvenile; Rosetta Lewin, 5-year-old reader;
7:30 p. m.—Care of the Body talk by Dr. Philip M. Lovell.
8:00 to 10:00 p. m.—News items. Program presenting Zaellner Quartet; Leo H. Sansiper, Russian baritone, and Rev. Edwin Wake.
10:00 to 11:00 p. m.—Glenn Edmunds and his Varsity Four.

FRIDAY, FEBRUARY 4—

- 6:30 to 7:30 p. m.—Children's hour. Including Marguerite Bringham, "Nightingale;" Catherine Cotetr, "Sweetheart of Radioland;" Margaret Bond, violinist; Bettiemae Pfefferkorn, "Bobol'nk of KHJ;" Billy Lord, "Police Comrade," and others.
7:40 p. m.—Stanley Hall in monologues.
8:00 to 10:00 p. m.—News items. Program including Dot Street, soprano; Grace Currey, harpist; Naomi Sweeney Brown, "California Mocking Bird," and a talk under the auspices of the Council of International Relations.

SATURDAY, FEBRUARY 5—

- 6:30 to 7:30 p. m.—Children's program. Including Nona Clapp, "Sunshine Fairy;" Dolly Wright, "Dolly of Radioland;" Arthur Stevens, "King Arthur;" Marjor's Genevieve Lowe, "June Bug;" Mercedes Marlowe, "Boy Girl;" Arthur L. Sisson, "Teedle De Dee."
8:00 to 10:00 p. m.—News items. Program presenting Mr. and Mrs. Benjamin F. Sears, old-time fiddler and pianist; the Los Angeles Railway Hawaiian Quartet, and others.

Program Published as Submitted by the Station

CROSLEY SPECIALISTS

PERFECT TONE, SELECTIVITY, STABILITY and DISTANCE

Are the results of our exact balancing. Have your Crosley improved at nominal cost. Satisfaction guaranteed. Open evenings.

CHILDS LABORATORY

1187 W. 24th St.

BEacon 7445

Los Angeles, Calif.

The Catalina Island Swim

One of these sets accompanied Mrs. Margaret Hauser in her swim.
Several of the swimmers had this set on their pilot boat.



The Companionable Set

*Light weight—easily handled—can be taken any place.
Perfect reproduction, selectivity, volume; beautifully designed.
Will Fit in Any Setting.*

The Lowest Priced Set of Its Kind on the Market.

ON DISPLAY IN LOS ANGELES AT
The Ambassador Hotel The Biltmore Hotel
Subway Terminal Waiting Room (between 4th and 5th on Hill St.)
13 Mercantile Arcade

Distributed by
Johnson Radio Co., 688 Geary Street, San Francisco
The Radio Studios, 1207 Fourth Ave., Seattle

KEMPER RADIO LABORATORY

1236 Santee St. LOS ANGELES WESTmore 2504
Makers of Kemper Ampliphonic Console



E. J. ALBRIGHT,
Announcer

Hollywood, California—337 Meters

KNX

750 WATTS—800 KILOCYCLES
LOS ANGELES EVENING EXPRESS
Paul C. Hoffman's Studebaker Bldg., 6116 Hollywood
Bldg., Hollywood. Phone HEmpstead 4101
NAYLOR ROGERS, Manager and Program Director
GLEN RICE, Asst. Manager
"The Voice of Hollywood"

DAILY EXCEPT SUNDAY—

- 8:00 a. m.—Inspirational talk and morning prayer.
8:55 a. m.—Time signals from Washington, D. C., followed by
Birthday notices.
9:00 a. m.—Radio Shopping News, conducted by Carey Preston
Rittenisetr.
10:00 a. m.—Town Crier of the Day and his pals.
10:30 a. m.—Kata Brew Vaughn, Director Household Economics Dept., Evening Express,
except Friday and Saturday.
12:00 noon—Magnavox Radio Orchestra, George Redman, director, courtesy of Listenwalter
& Cough.
12:30 p. m.—W. F. Alder Travelogue.
1:30 p. m.—The Book Worm.
2:00 p. m.—Radio Trades Association musical program.
4:00 p. m.—Lost and Found Column.
4:55 p. m.—Market reports.
5:45 p. m.—The Town Tattler.
6:00 p. m.—George Redman's Concert Orchestra playing from Leighton's Arcade Cafeteria
6:30 p. m.—Dinner hour concert, presenting the Yale Radio Battery Orchestra, under the
direction of Paul Finstein; through the courtesy of the makers of Yale Flashlights and
Batteries.

WEEK COMMENCING SUNDAY, JANUARY 30, 1927

SUNDAY, JANUARY 30—

- 10:00 a. m.—First Presbyterian Church of Hollywood, Rev. Stewart P. MacLennan.
2:00 to 4:00 p. m.—City Park Board musical program.
6:30 p. m.—First Unitarian Church.
7:00 p. m.—First Presbyterian Church of Hollywood, Rev. Stewart P. MacLennan.
8:00 p. m.—Circle Theater Concert Orchestra and organ recital
9:00 p. m.—Feature program.

MONDAY, JANUARY 31—

- 3:00 p. m.—First Presbyterian Church of Hollywood.
4:00 p. m.—Little Jean and the Town Crier of the Day.
7:00 p. m.—George J. Birkel Music Company courtesy program.
7:30 p. m.—Playlet, courtesy Overall Furniture Company.
8:00 p. m.—L. W. Stockwell Company courtesy program.
9:00 to 11:00 p. m.—KNX Feature Program.
11:00 p. m.—Hotel Ambassador; Gus Arnheim's Coconut Grove orchestra

TUESDAY, FEBRUARY 1—

- 3:00 p. m.—Combined program of Police and Fire Departments.
4:00 p. m.—Radio Matinee, with Louise Howatt, contralto.
7:00 p. m.—Wiltshire Innaco Co. courtesy program.
7:30 to 9:00 p. m.—Feature program.
9:00 p. m.—Western Auto Supply Company, courtesy program.
10:00 p. m.—Hotel Ambassador, Gus Arnheim's Coconut Grove orchestra.

WEDNESDAY, FEBRUARY 2—

- 7:00 p. m.—George J. Birkel Music Company, courtesy program.
7:30 p. m.—Feature program.
8:00 p. m.—Stewart Warner Radio Dealers, courtesy program.
9:00 to 10 p. m.—Feature program.
11:00 p. m.—Hotel Ambassador, Gus Arnheim's Coconut Grove orchestra.

THURSDAY, FEBRUARY 3—

- 11:00 a. m.—Nature talk, courtesy Marvel Ant Gelatine Company.
7:00 p. m.—Organ recital, courtesy of the Overall Furniture Company.
8:00 p. m.—Bert Farrar, Inc., courtesy program.
9:00 to 11:00 p. m.—Feature program.
11:00 p. m.—Hotel Ambassador, Gus Arnheim's Coconut Grove orchestra.

FRIDAY, FEBRUARY 4—

- 3:00 p. m.—Los Angeles District Federation of Women's Clubs musical program.
4:00 p. m.—Boy Scouts' musical program.
7:00 to 9:00 p. m.—Feature program.
9:00 p. m.—Davis Perfection Bread Company, courtesy program.
10:00 p. m.—Feature program.
11:00 p. m.—Hotel Ambassador, Gus Arnheim's Coconut Grove Orchestra.

SATURDAY, FEBRUARY 5—

- 3:00 p. m.—Town Crier of the Day and his Pals.
7:00 p. m.—Stories of insect life, by Harry W. McSpadden.
7:15 p. m.—Announcement of Sunday services of the leading Los Angeles churches.
7:30 p. m.—Luna Park courtesy program.
8:00 to 10:00 p. m.—Feature program.
10:00 p. m.—Hotel Ambassador, Gus Arnheim's Coconut Grove Orchestra.
11:00 p. m.—KNX Frolic, from the main studio.

Program Published as Submitted by the Station.

ATWATER KENT RADIO

Call the Roll—

by simply turning the ONE DIAL of an Atwater Kent Radio. One by one the stations far and near answer "here" by a sample of their programs.

After you have tried them all, flick the dial back to the one you like the best and enjoy carefree reception for the rest of the evening.

*Your nearest Atwater Kent Dealer
will be glad to let you "Call the
Roll" for yourself*



Model 35
Atwater Kent Receiver
with one dial, \$75
(less accessories)

RAY THOMAS INC.
Atwater Kent Distributor

• 1248 S. Hope St. WE 6334
LOS ANGELES



Gerald L. King
Manager

Hollywood, California—252 Meters

KFWB

500 WATTS—1190 KILOCYCLES
WARNER BROS. MOTION PICTURE STUDIOS
Warner Bros. West Coast Studio, 5842 Sunset Blvd.
GERALD L. KING, Mgr. WM. RAY, Asst. Mgr.
Phone GL. 9461
"Movie Land"

DAILY EXCEPT SUNDAY—

6:00 to 7:00 p. m.—Pontiac Six Dinner Hour

8:00 to 8:10 p. m.—News Items.

10:10 to 11:00 p. m.—Warner Bros. Frolic.

MONDAY, TUESDAY AND WEDNESDAY—

8:00 to 8:00 p. m.—Children's Hour.

WEEK COMMENCING SUNDAY, JANUARY 30, 1927

SUNDAY, JANUARY 30—

9:00 to 11:00 p. m.—Warner Bros. Frolic, introducing Frances St. George, Albert Koglovich, Starke Sisters, H. A. Randall, Jackie Lucas, Harry G. Keiper and his MovieLand Orchestra.

MONDAY, JANUARY 31—

7:00 to 8:00 p. m.—Program by courtesy of J. N. Pyles National Detective Service.

8:00 to 9:00 p. m.—LeRoy Kullberg, Ann Grey, Jane Beata, Warner Bros. Orchestra.

9:00 to 10:00 p. m.—Jack Goode, Warner Bros. European Novelty Orchestra.

TUESDAY, FEBRUARY 1—

7:00 to 7:50 p. m.—Interesting announcements interspersed with musical numbers.

8:00 to 9:00 p. m.—Kenneth Gillum, Virginia King, Warner Bros. Orchestra.

9:00 to 10:00 p. m.—Myrtle Waters, Charles Beauchamp, Warner Bros. String Trio.

WEDNESDAY, FEBRUARY 2—

7:00 to 7:30 p. m.—Thirty minutes of sunshine by Chas. W. Hamp.

8:00 to 9:00 p. m.—Ina Mitchell Butler, Elmer Bramel, Warner Bros. Orchestra.

9:00 to 10:00 p. m.—The Little Junior Symphony under direction of Albert Koglovich.

THURSDAY, FEBRUARY 3—

7:00 to 7:50 p. m.—Interesting announcements interspersed with musical numbers.

8:00 to 9:00 p. m.—Frances St. George, Kenneth Gillum, Warner Bros. Orchestra.

9:00 to 10:00 p. m.—Julius Phillips, Bobbie Warren, Warner Bros. String Trio.

FRIDAY, FEBRUARY 4—

7:00 to 7:50 p. m.—Interesting announcements interspersed with musical numbers.

8:00 to 9:00 p. m.—Jack Medford, Iunc Parker, the Rover Boys.

9:00 to 10:00 p. m.—Merrill Oalin, Ursula Cheshire, Warner Bros. String Trio.

SATURDAY, FEBRUARY 5—

7:00 to 8:00 p. m.—Interesting announcements interspersed with musical numbers.

8:00 to 9:00 p. m.—Program presented by courtesy of the Mona Motor Oil Co.

9:00 to 10:00 p. m.—Elmer Bramel, Hester Bacon, Warner Bros. String Trio.

Program Published as Submitted by the Station

Did You Get Your 1927 RADIO CALL AND LOG BOOK?

They are going fast. Third reprint just off the press.

Price 25c

News Stands, Radio Dealers or

RADIO DOINGS

407 East Pico Street

Los Angeles, Calif.

Authorized

Steward-Warner
Matchless—Hornet—Dominator

Dealers

FIVE TUBE, MODEL 300, COMPLETE, \$99.00 — TERMS

Ceco Tubes

Majestic B Units

Philco A and B Units

Acme Cone Speakers

National A Socket Power

Trickle Chargers, \$8.60

Console Cabinets

Cannon Ball Speakers

FULL LINE OF PARTS

MAIL ORDERS PROMPTLY FILLED

ATWATER RADIO & ELECTRIC COMPANY

3208 Glendale Blvd.

OLympia 6417

Los Angeles, Calif.

Tried ~
and not found wanting!

The FARRAND
“B” ELIMINATOR

(Really an Eliminator and Power Amplifier Combined)

The manufacturers of the justly popular Farrand Cone Speakers have produced an Eliminator which can easily be called a Power Amplifier.

Power; tone; freedom from trouble; built to last a lifetime; the Farrand is a real boon to the Radio listener.

It costs more—but it does more. Quality of reproduction is ruined by poor plate supply units. Nothing has been sacrificed to make Farrand a perfect product. Just one of many features—it delivers 75 milliamps at 150 volts.

Ask your dealer or send us his name and we will arrange for a demonstration.

WESTERN RADIO. Inc.

Wholesalers of Fine Radio Merchandise since 1919

1224 Wall Street
LOS ANGELES

Westmore
3338



G. ALLISON PHELPS
Manager and Announcer

Hollywood, California—370.2 Meters

KMTR

500 WATTS
KMTR RADIO STATION
1025 N. Highland Avenue. Telephone HO 47 3026
Owned and Operated by C. C. JULIAN
OLIVER S. GARRETSON, Technical Engineer
Portable Broadcast Station 6XBA
"Echoes of Hollywood"

DAILY EXCEPT SUNDAY—

7:30 to 8:00 a. m.—J. C. Casey in Setting-up Exercises.
1:30 to 2:30 p. m.—Radio Press Hour.
2:30 to 4:00 p. m.—Paisie De Dance.
4:00 to 4:15 p. m.—Vacation Days.
5:00 to 5:30 p. m.—Home Hour.
5:30 to 6:00 p. m.—White King Male Quartet.
6:00 to 6:15 p. m.—Nightly Doings.
6:15 to 7:00 p. m.—Duro System Dinner Hour Concert.
7:00 to 7:30 p. m.—Musical Program.
10:00 to 11:00 p. m.—Miller's Cafe Lafayette Orchestra.
11:00 to 12:00 midnight—Dance Music from Palais de Dance.

TUESDAY, THURSDAY, SATURDAY—

9:30 to 10:00 p. m.—Sylvia, the Blind Cook.

WEEK COMMENCING SUNDAY, JANUARY 30, 1927

SUNDAY, JANUARY 30—

6:15 to 6:30 p. m.—Nightly Doings.
6:30 to 7:00 p. m.—Lula Cretberg's Half Hour.
7:00 to 8:00 p. m.—Miller's Lafayette Cafe Concert Orchestra.
8:00 to 9:30 p. m.—Jack Cronshaw's Orchestra.
9:30 to 10:00 p. m.—Feature Program.

MONDAY, JANUARY 31—

7:30 to 8:30 p. m.—Safeway Stores' Program.
8:30 to 9:30 p. m.—Eureka Vacuum Cleaner Company Program.
9:30 to 10:30 p. m.—Feature Program.

TUESDAY, FEBRUARY 1—

10:00 to 10:15 a. m.—Fifteen Minutes of Sunshine by Charles Hamp.
10:15 to 10:45 a. m.—Dr. T. J. Coulter—"Dogs and Cats."
11 a. m. to 12 m.—Mime Alone's Talk.
7:30 to 8:00 p. m.—Silver String Quartette.
8:00 to 9:00 p. m.—Maxwell House Coffee program.
9:00 to 10:00 p. m.—California Russian Quartette, Chico de Verde, Director.

WEDNESDAY, FEBRUARY 2—

10:30 to 10:45 a. m.—Dr. Rudolph H. Gerber.
7:30 to 8:30 p. m.—Amphion Trio.
8:30 to 9:00 p. m.—Ben Knott—Davis Six Orchestra.
9:00 to 10:00 p. m.—Los Angeles Railway Orchestra.

THURSDAY, FEBRUARY 3—

10:00 to 10:15 a. m.—Fifteen Minutes of Sunshine by Charles Hamp.
7:30 to 8:00 p. m.—"Little" Eddie Barnes.
8:00 to 9:00 p. m.—Lenore Duncan Hallad Ensemble.
9:00 to 10:00 p. m.—Angelus String Quartette.

FRIDAY, FEBRUARY 4—

7:30 to 8:00 p. m.—Thirty Minutes of Sunshine by Charles Hamp.
8:00 to 9:00 p. m.—KMTR Concert Orchestra. Loren Powell, director.
9:00 to 10:00 p. m.—Ray Bailey's String Quintet.

SATURDAY, FEBRUARY 5—

10:00 to 10:15 a. m.—Charles Hamp, Director of Radio Activities for the Iona Company.
1:15 to 1:30 p. m.—Officer Earl H. Cooper, Bureau of Public Safety.
7:30 to 8:10 p. m.—Los Angeles Police and Fire Departments.
7:40 to 8:20 p. m.—Police and Fire Department Program.
8:20 to 8:30 p. m.—Sheriff's Office. Bureau of Public Relations.
8:30 to 9:00 p. m.—Y. M. C. A. Program.

Program Published as Submitted by the Station.

SHEPHERD RADIO SERVICE

Authorized Dealer for

Stromberg-Carlson, Federal Ortho-Sonic Receiving Sets

We specialize in correcting balky receivers. Super-Heterodynes, Infradynes, Roberts, etc., made to perform efficiently

Transformers Matched, Coils Balanced

Phone Us Your Troubles. Our Service Will Please

Batteries Changed, Tubes Reactivated. Work Called for and Delivered

GRanite 7482

7562 Sunset Boulevard

Hollywood, California

Selling Like Hot Cakes

The Powell 'B' Eliminator

**Uncondition-
ally
Guaranteed**



\$12²⁵

Absolutely No Hum

Operates any set from light socket without the use of expensive and troublesome "B" batteries. A large surplus of power at 100 volts and at a cost of only a few cents a year.

**MORE VOLUME - - MORE DISTANCE
GREATER SATISFACTION
BETTER QUALITY - - BETTER PRICE**

No Tubes, No Acid and Nothing Else to Buy

A ten-day trial with absolute satisfaction or money back

GUARANTEE

This instrument is the result of months of experimenting and exhaustive tests. The best of materials and workmanship have been combined to insure its satisfaction with the user and it is guaranteed unconditionally for one year. If for any reason it fails to perform satisfactorily it should be returned to the seller who is instructed to repair or replace, free of charge.

Call or Telephone VERmont 1619 for Information

Powell Manufacturing Co.

4009 S. Western Ave.

Los Angeles, Calif.

Los Angeles, California—294 Meters

KTBI

750 WATTS—1020 KILOCYCLES
BIBLE INSTITUTE OF LOS ANGELES
MR. M. E. CARRIER, Manager
PROF. H. G. TOVEY, Director of Programs
Phone ME. 6701

DAILY EXCEPT SUNDAY—

8:30 to 9:00 a. m.—Devotional Hour.
2:00 to 3:00 p. m.—Inspirational Hour.

DAILY EXCEPT FRIDAY AND SUNDAY—

7:15 to 8:00 p. m.—Aunt Martha's Children's Hour.

WEEK COMMENCING SUNDAY, JANUARY 30, 1927

SUNDAY, JANUARY 30—

10:45 a. m. to 12:30 p. m.—Regular service of the Church of the Open Door.
6:00 to 7:00 p. m.—Radio Vesper Service.
7:15 to 9:30 p. m.—Regular evening service of the Church of the Open Door.

MONDAY, JANUARY 31—

8:00 to 9:00 p. m.—Musical program, arranged by Alma K. Moss, contralto, and teacher.

TUESDAY, FEBRUARY 1—

8:00 to 9:00 p. m.—Program by Citadel Band, directed by Harold A. Gooding.

WEDNESDAY, FEBRUARY 2—

8:00 to 9:00 p. m.—Dr. John McNeill will lecture.

THURSDAY, FEBRUARY 3—

8:00 to 9:00 p. m.—Program arranged by Gordon E. Hooker.

FRIDAY, FEBRUARY 4—

6:15 to 7:00 p. m.—Aunt Martha's Children's program.
7:00 to 8:00 p. m.—Exposition of International Sunday School lesson.
8:00 to 9:00 p. m.—Dr. John McNeill will lecture.

Program Published as Submitted by the Station.

Los Angeles, California—275.1 Meters

KFSG

500 WATTS—1090 KILOCYCLES
ANGELUS TEMPLE, ECHO PARK. Phone DR. 2560
AIMEE SEMPLE McPHERSON, Founder, President
ESSIE BINKLEY, Program Manager
ESTHER FRICKE GREENE, Organist
GLADWYN N. NICHOLS, Musical Director & Announcer
"Four Square Gospel"

DAILY EXCEPT SUNDAY AND MONDAY—

10:30 to 11:30 a. m.—Sunshine Hour.
11:30 a. m. to 12:30 p. m.—Noonday Musical.
6:30 to 7:30 p. m.—Angelus Hour.

DAILY EXCEPT SUNDAY, WEDNESDAY AND SATURDAY—

2:30 to 3:30 p. m.—Gray Studio Program.

WEEK COMMENCING SUNDAY, JANUARY 30, 1927

SUNDAY, JANUARY 30—

10:30 a. m. to 12:30 p. m.—Sunday morning worship. Evangelist G. A. Garr
2:30 to 4:30 p. m.—Afternoon Dispensational Service by G. A. Garr.
6:30 to 8:00 p. m.—Musical Hour. Angelus Temple Band and Choir.
8:00 to 9:30 p. m.—Revival service by G. A. Garr.
10:00 to 11:00 p. m.—Organ Recital by Esther Fricke Greene.

TUESDAY, FEBRUARY 1—

3:30 to 4:30 p. m.—Vesper Hour. Organ Recital by B. Earnest Ballard.
7:30 to 9:30 p. m.—Evangelistic services by Student Evangelists.

WEDNESDAY, FEBRUARY 2—

2:30 to 5:30 p. m.—Divine Healing Service by G. A. Garr.
7:30 to 9:30 p. m.—Regular mid-week prayer service by G. A. Garr.

THURSDAY, FEBRUARY 3—

3:30 to 4:30 p. m.—Vesper Hour. Organ Recital by B. Earnest Ballard.
7:30 to 9:30 p. m.—Regular Water Baptismal Service. G. A. Garr.
9:15 to 10:00 p. m.—Gray Studio Program.
10:00 to 11:00 p. m.—Organ Recital by Esther Fricke Greene.

FRIDAY, FEBRUARY 4—

3:30 to 4:30 p. m.—Vesper Hour. Organ Recital by Esther Fricke Greene.
7:30 to 9:30 p. m.—Crusader Rally. Sermon by G. A. Garr.
10:00 to 11:00 p. m.—Rack Home Hour. Angelus Temple Band.

SATURDAY, FEBRUARY 5—

3:30 to 4:30 p. m.—The Children's Happy Hour.
7:30 to 9:30 p. m.—Divine Healing service conducted by G. A. Garr

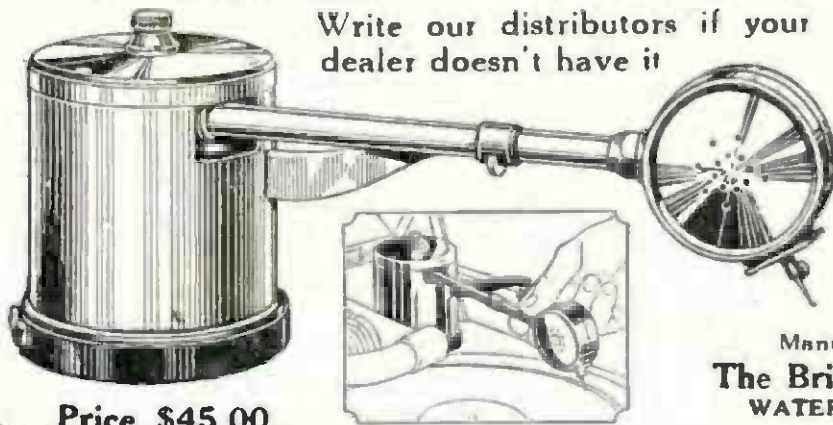
Program Published as Submitted by the Station

Bristophon

ELECTRIC POWER AMPLIFIER

Electrifies the ordinary phonograph and gives it the tone range, sweetness and volume of the new "phonic" instruments. Operates in three ways: (1) with radio Power Speaker. (2) with radio Power Amplifier. (3) with radio Speaker only.

Write our distributors if your dealer doesn't have it



Price \$45.00

Pacific Coast Distributors:

SAN FRANCISCO:
Pacific States Elec. Co.
675 Mission St.
Leo. J. Meyberg Co.
973 Mission St.

LOS ANGELES:
Pacific States Elec. Co.
236 S. Los Angeles St.
Leo. J. Meyberg Co.
1022 S. Wall St.

SPOKANE:
Pacific States Elec. Co.
122 S. Lincoln St.

OAKLAND:
Leo. J. Meyberg Co.
921 Harrison St.

SEATTLE:
Pacific States Elec. Co.
570 First Ave., So.

PORTLAND:
Pacific States Elec. Co.

Manufactured by
The Bristol Company
WATERBURY, CONN.

demand

AEROVOX

"Built Better"

FILTER CONDENSER BLOCKS

for all "B" Eliminators and Power Amplifiers

AEROVOX products are used as

standard equipment by over

200 manufacturers of Radio

Receivers and "B" Eliminators



Stock carried in Los Angeles office

W. C. HITT COMPANY
324 No. San Pedro Street
Los Angeles, Cal.

AEROVOX WIRELESS CORP. 60-72 Washington St., Brooklyn, N. Y.



Dave Ward
Announcer

Hollywood, California—226 Meters

KFOZ

1641 North Argyle Ave., Hollywood, California
Gladstone 3197; GLadstone 3188
DAVE WARD, Program Director and Announcer
L. E. TAFT, Technical Engineer
"The Palace Bungalow Studio"

DAILY EXCEPT SUNDAY—

12:00 to 1:00 p. m.—Los Angeles Merchants' and Manufacturers' Hour.

6:00 to 7:00 p. m.—Decker, Diamond and Decker, Hawaiian Trio.

7:00 to 8:00 p. m.—Musical Hour.

WEEK COMMENCING SUNDAY, JANUARY 30, 1927

SUNDAY, JANUARY 30—

8:00 to 9:00 p. m.—Aram Galanian's Orchestra and Al Flanigan, soloist.

9:00 to 11:00 p. m.—Dave Ward and his KFOZ Yellow Jackets; Joe Hawley and his Tipple Guitar, and Virginia King, accompanied by Mable King.

MONDAY, JANUARY 31—

8:00 to 9:00 p. m.—Semi-classical Hour, presented by Myra Belle Vickers.

9:00 to 11:00 p. m.—L. A. Railway Quartet, Wendel Smith, Art Goodstein, Virginia King, accompanied by Mable King; Dave Ward and his KFOZ Yellow Jackets.

TUESDAY, FEBRUARY 1—

8:00 to 10:00 p. m.—Police and Fire Joint Program.

10:00 to 11:00 p. m.—Dave Ward and his KFOZ Yellow Jackets, George Ashworth and Jimmie Husted in Banjo Duets, and Joie Lee and her Tipple Guitar.

WEDNESDAY, FEBRUARY 2—

8:00 to 9:00 p. m.—C. Howard Paxton, Arni Fancier Orchestra, and Helen Boyd.

9:00 to 10:00 p. m.—Kitty and Boys; Jack Good, and Barker Bros. Orchestra.

10:00 to 11:00 p. m.—Dave Ward and his KFOZ Yellow Jackets, Virginia King, accompanied by Mable King, Laurence Lohr, and Hazel McCauley, studio accompanist.

THURSDAY, FEBRUARY 3—

8:00 to 9:00 p. m.—Rebroadcast of eastern station.

9:00 to 10:00 p. m.—Gerard's Syncopators, Ned Miller, soloist; Sol and Jayce Gregory.

10:00 to 11:00 p. m.—Dave Ward and his KFOZ Yellow Jackets; Royal Wallace and Uke, and Ruth Michelson.

FRIDAY, FEBRUARY 4—

7:00 to 8:00 p. m.—Musical Hour.

8:00 to 9:00 p. m.—Hoot Gibson's Hawaiian Trio and Ray Honeywell.

9:00 to 11:00 p. m.—Dave Ward and his KFOZ Yellow Jackets; "Red" Wyatt, Pat Lee and Helen McColl.

SATURDAY, FEBRUARY 5—

8:00 to 9:00 p. m.—The Silver String Glenelians, and Ruth Donnan.

9:00 to 11:00 p. m.—L. A. Railway Orchestra; Don Stevens, Bud Riley, Dick Powers, Joie Lee and her Tipple Guitar, and Eddie Mills and his 14 Strings of Harmony.

Program Published as Submitted by the Station.



R. C. Huckabee
Announcer

Los Angeles, Calif.—517 Meters

KGEF

1000 WATTS—580 KILOCYCLES
TRINITY METHODIST CHURCH
BOB SHULER, Pastor
Phone BRoadway 1000
C. C. HOOPER, Manager
M. J. HANKINS, Technician

SUNDAYS—

10:30 a. m. to 12:15 p. m.—Morning services.

5:00 to 6:00 p. m.—Vesper hour.

7:15 to 9:00 p. m.—Evening services.

9:00 to 10:00 p. m.—Old Hymns Songfest.

10:00 p. m.—Family Altar service.

WEDNESDAYS—

6:00 to 7:00 p. m.—Children's hour.

7:00 to 7:45 p. m.—Conroy's Bible Class.

7:45 to 8:45 p. m.—Studio musical program.

8:45 to 9:15 p. m.—Question hour.

FRIDAYS—

7:00 to 7:30 p. m.—Radio Bible Class.

7:30 to 8:00 p. m.—Studio musical program.

8:00 to 8:30 p. m.—Civic half hour.

8:30 to 9:30 p. m.—Southern California Holiness Association.

Program published as submitted by the station.



George Frenger
Announcer

Pasadena, California—315.6 Meters

KPSN

PASADENA STAR-NEWS
1000 WATTS—950 KILOCYCLES
GEORGE CECIL COWING, Managing Director
GEORGE FRENGER, Program Manager
FORBES W. VAN WHY, Engineer-In-Charge
PERCY C. PRYOR, Studio Office
Phone, Wakefield 3111

DAILY EXCEPT SUNDAY—

12:00 to 12:15 p. m.—News Bulletin.

6:00 to 7:00 p. m.—Dinner-time news report.

WEEK COMMENCING SUNDAY, JANUARY 30, 1927

SUNDAY, JANUARY 30—

10:30 a. m.—Family Altar Service by the United Church Brotherhoods.

6:00 to 7:00 p. m.—Star-News concert, with Adolf Tandler and the Ensemble.

MONDAY, JANUARY 31—

8:00 9:15 p. m.—Star-News concert, with Adolf Tandler and the Ensemble.

TUESDAY, FEBRUARY 1—

8:00 9:15 p. m.—Star-News concert, with Adolf Tandler and the Ensemble.

THURSDAY, FEBRUARY 3—

8:00 to 9:15 p. m.—Musical program arranged for the Pasadena Chamber of Commerce.

FRIDAY, FEBRUARY 4—

8:00 9:15 p. m.—Star-News concert, with Adolf Tandler and the Ensemble.

SATURDAY, FEBRUARY 5—

8:00 9:15 p. m.—Star-News concert, with Adolf Tandler and the Ensemble.

Program Published as Submitted by the Station.

Distance and Selectivity
ON YOUR SUPER-HETERODYNE

You Get Both With a

**RADIO
POWER
BOX**

Results Guaranteed

Use this Radio Power Box one week on your Radiola Semi-Portable No. 25, then if you are not satisfied, return box and the purchase price will be refunded.

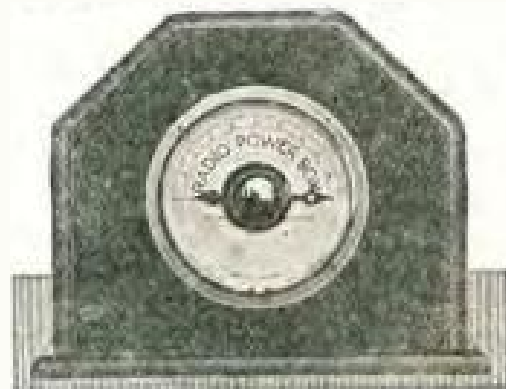
**SOLD DIRECT TO SET OWNERS
ONLY**

Immediate Attention Given Mail Orders

THE SANTEE CO.

216 Calo Building
443 S. San Pedro St.

Telephone TUCKER 4951
Los Angeles, Calif.



DE LUXE MODEL No. 25

This model built exclusively for
Radiola 25 Super-Heterodyne

Now \$7.00



Tom Mitchell
Announcer

Santa Monica, California — 238 Meters

KNRC

1000 WATTS CAPACITY
Owned and Operated by KEIRULFF & RAVENS-
CROFT COMPANY.
Municipal Auditorium, Ocean Park, Santa Monica,
Calif. Phone Santa Monica 63-101.
TOM MITCHELL, Studio Manager and Announcer.
C. B. JUNEAU, Transmission Engineer.
"The Station with a Smile"

DAILY EXCEPT SUNDAY—

6:00 p. m.—Merchants Review.

6:30 to 7:30 p. m.—Club Casa Del Mar organ recital. Remote control.

7:30 p. m.—Merchants Review.

10:00 to 11:00 p. m.—Club Casa Del Mar Orchestra. Remote control.

DAILY EXCEPT MONDAY—

8:00 to 9:00 p. m.—Band Concert

8:30 p. m.—Band Concert.

WEEK COMMENCING MONDAY, JANUARY 31, 1928

MONDAY, JANUARY 31—

4:15 p. m.—Brother Tom and Smiling Circle.

8:00 to 10:00 p. m.—Lee Young Jr. and his Gables Club Orchestra. Smiling Harvey Porter, Dorothy and Dawn Smith.

TUESDAY, FEBRUARY 1—

4:15 p. m.—Brother Tom and his Smiling Circle.

9:00 p. m.—Sherman Hunter, tenor; Georgia Williams Trio.

WEDNESDAY, FEBRUARY 2—

4:15 p. m.—Smiling Circle with Brother Tom.

9:00 p. m.—Pirate Band, Albert Broad, tenor.

THURSDAY, FEBRUARY 3—

4:00 p. m.—Brother Tom and his Smiling Circle.

9:00 p. m.—Red Wyatt, Golda Anderson Trio, Margaret Bechtel, Erma Reed

10:00 p. m.—Club Casa del Mar Orchestra, by remote control through KNRC.

FRIDAY, FEBRUARY 4—

4:00 p. m.—Brother Tom and his Smiling Circle.

9:00 p. m.—Los Angeles Railway String Quartet and Band.

SATURDAY, FEBRUARY 5—

4:15 p. m.—Brother Tom and his Smiling Circle.

9:00 p. m.—K and R Program.

11:00 p. m.—Gables Club Orchestra by remote control.

SUNDAY, FEBRUARY 6—

10:45 p. m.—Pilgrim Lutheran Church services by remote control through KNRC.

5:15 p. m.—The Pirate Band.

6:15 p. m.—Pilgrim Lutheran Church service.

7:00 p. m.—Club Casa del Mar Organ Recital.

8:00 p. m.—Municipal Band Concert.

9:00 p. m.—Club Casa del Mar Recital.

Program Published as Submitted by the Station.

PALMER RADIO LABORATORY

Established 1923

Specializing in

SUPER-HETERODYNES AND INFRADYNES

Intermediate Transformers Made and Calibrated

Also all other types of receivers made to operate efficiently

• *Satisfaction Guaranteed or No Charge*

Advice Free

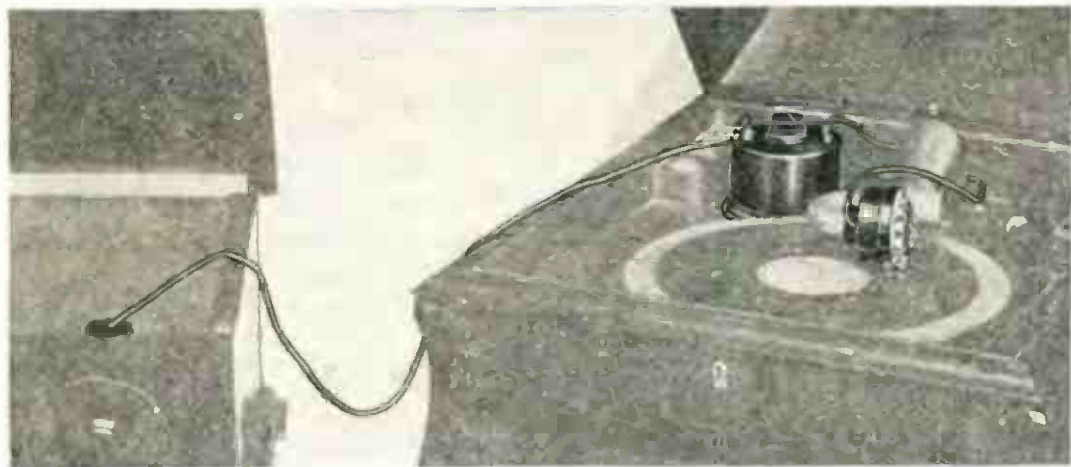
Open Evenings Till 9 P. M.

Courtesy to All

4529 S. Vermont, Los Angeles. Phone VERmont 7883

ELEC-TRU-TONE

THE PHONOGRAPH MODERNIZER



This photograph shows the ELEC-TRU-TONE Reproducer on the tone arm of your present phonograph, and the energizing plug in the detector tube socket of your radio set.

BRINGS TO YOUR OLD PHONOGRAPH THE MARVELS OF ELECTRIC REPRODUCTION

Heretofore Obtainable Only on Phonographs Costing from \$400 to \$1,000.

Most people are aware that such revolutionary improvements have recently been made in phonographs that all previous models are obsolete.

Those who have not heard the new instrument have no conception of how perfect phonograph reproduction can be. A new thrill is in store for them.

New models are so advanced that the turn-in value of your old phonograph averages only 10% or 15% of its original purchase price.

The ELEC-TRU-TONE, instead of depreciating your old machine, adds several hundred dollars to its value, and gives you the most advanced reproduction for only \$35.00.

The ELEC-TRU-TONE can be attached in one minute by anyone, and is so beautifully finished that it very materially adds to the appearance of your phonograph.

Manufactured by

The Elec-tru-tone Corp., Hibernian Bldg., Los Angeles

Distributed Nationally by

Baker-Smith Co., Inc., Call Bldg., San Francisco

California Jobbers

THE ELECTRIC CORPORATION

1050 Santee Street
Los Angeles

ELECTRIC SUPPLY CO.

370 Eleventh Street
Oakland

YALE RADIO ELECTRIC CO.

1111 Wall Street
Los Angeles

KIERULFF & RAVENSCROFT

645 Howard Street
San Francisco

COAST ELECTRIC CO., 744 G St., San Diego

Venice, California—205 Meters



Len T. Cleary
Announcer

KFVD

500 WATTS
McWHINNIE ELECTRIC CO., Venice Ballroom,
Venice Calif. Phone 63959 or 43960
Station Mgr., W. H. WHITE, Technician, O. B. MILLS

DAILY EXCEPT SUNDAY—

9:00 to 10:00 a. m.—News and musical program.
5:00 to 7:00 p. m.—Shopping Hints and Musical Program.
10:00 to 12:00 midnight—Venice Ballroom Orchestra.

WEEK COMMENCING SUNDAY, JANUARY 30, 1927

SUNDAY, JANUARY 30—

10:00 to 12:00 midnight—Venice Ballroom Orchestra.

MONDAY, JANUARY 31—

8:00 to 8:30 p. m.—Kathryn Pratt, concert pianist.

8:30 to 9:00 p. m.—Harry Dinowitz, violinist; George Throux, ukulele artist.

9:00 to 10:00 p. m.—Melba Lyon, KFVD girl, and others.

TUESDAY, FEBRUARY 1—

8:00 to 9:00 p. m.—Martin Wallace Dance Orchestra and entertainment, featuring Bob Wallace and Bill Wallace, Scotch comedians.

9:00 to 10:00 p. m.—Geraldine Gordon, female baritone; One String Danny and Six String Penny, Melba Lyon, KFVD girl.

WEDNESDAY, FEBRUARY 2—

4:00 to 5:00 p. m.—Children's Hour program under the direction of Ursula March Largey.

5:00 to 6:30 p. m.—Carl Brandenburg, tenor.

8:30 to 9:30 p. m.—Barker Brothers King Players: Violet Rose, whistler; Randall Brothers, guitar soloists.

9:30 to 10:00 p. m.—Ed Funnell and George Curry, harmonica soloists.

THURSDAY, FEBRUARY 3—

4:00 to 5:00 p. m.—Special program featuring Louis Lusich, Slavonian tenor, and others.

8:00 to 9:30 p. m.—Virginia McCoy, contra contralto.

9:30 to 9:00 p. m.—The Ancient Quartet, featuring the four old soldiers.

9:00 to 10:00 p. m.—Pope's Californians' Dance Orchestra; Melba Lyon, KFVD girl, and others.

FRIDAY, FEBRUARY 4—

4:00 to 5:00 p. m.—Children's Hour program.

5:00 to 6:30 p. m.—Crescent Bay Cities Quartet.

8:30 to 9:30 p. m.—L. A. Railway String Quartet.

9:30 to 10:00 p. m.—California Colonial Band under the direction of Frank Pratt; Melba Lyon, KFVD girl and others.

SATURDAY, FEBRUARY 5—

8:00 to 10:00 p. m.—Studio program and everybody welcome.

12:00 midnight—Frolie at the Ship Cafe, featuring Dave Spell and his wonder orchestra; Val Roberts, Mal Kalish and George Lloyd.

Program Published as Submitted by the Station.

Avalon, California—211.1 Meters



Major Lawrence Mott
Announcer

KFWO

THE ISLAND STATION
Power 250 Watts—Western Electric Equipment
"Katalina for Wonderful Outings"
MAJOR LAWRENCE MOTT, Owner-Operator
MISS FRANCES HEWITT, Studio & Program Dir.
"The Isle With a Smile"

WINTER SCHEDULES AT KFWO

The Mott Station at Catalina Island, California

(In effect week of Sept. 20th)

DAILY EXCEPT MONDAY—

12:30 to 1:30—Hotel St. Catherine Orchestra.

6:30 to 8:00—Hotel St. Catherine Orchestra.

DAILY EXCEPT MONDAY, THURSDAY AND SUNDAY—

6:00 to 6:30—Studio.

MONDAYS: Silent.

TUESDAYS: 5:00 to 6:00—Miss Hewitt's Golden Hour.

8:00 to 8:00—Studio.

WEDNESDAYS: 8:00 to 9:00—Studio Program.

9:00 to 12:00 Midnight—Overalls.

THURSDAYS: 6:00 to 6:30—Wrigley Chimes.

8:00 to 9:00—Studio Program.

FRIDAYS: 5:00 to 6:00—Miss Hewitt's Golden Hour.

SATURDAYS: 3:00 to 4:30—Rebroadcast of KNX.

9:15 to 10:00—Studio.

SUNDAYS: 5:00 to 6:00—Miss Hewitt's Golden Hour.

6:00 to 6:30—Wrigley Chimes.

8:00 to 9:15—Lobby Concert.

Victor Records used during all programs.

Program Published as Submitted by the Station.

BRACH TOTEM-POLE RADIO Antenna



Here is an antenna the size of a small flag pole, but containing 100 feet of enameled aerial wire, that can be readily attached to roof, side or window ledge of house. Ideal for apartment houses and hotels. Price, including everything required to erect, only \$10.

Brach
Radio Products
L. S. BRACH MFG. CO.
NEWARK, N. J. TORONTO, CAN.



Makers of the Famous
BRACH LIGHTNING ARRESTERS

First See This NO-BATTERY RADIO



BEFORE you decide on your new Radio, see and hear this new 5-tube Falck. Simple and fool-proof one-dial control—unequaled selectivity in tuning in the desired station without interference. And no batteries or chargers of any kind! Operating from the electric light socket, the Falck is always ready—its efficiency never diminishes with use; its low first cost is the last.

\$150 Complete—No Extras

See this supreme Radio value at any authorized Falck dealer, or phone Mutual 1720 for demonstration in your own home.

FALCK RADIO SALES CO
1262 W. Second St.

The Falck



"Hal" G. Nichols
Announcer

Long Beach, California—233 Meters

KFON

1280 KILOCYCLES—750 WATTS

NICHOLS & WARRINER, INC.

Studio 211 Jergins Trust Bldg. Phone 617-19, 614-60

Business Office, 212 Jergins Trust Bldg.

Phones: 617-19, 614-60

HAL G. NICHOLS, Manager and Studio Director

"Where Your Ship Comes In"

DAILY EXCEPT SUNDAY—

10:15 to 10:30 a. m.—"Devotion Period."

11:30 a. m. to 12:30 p. m.—Prima Hour.

4:00 to 4:30 p. m.—Press-Telegram Late News.

5:00 to 6:00 p. m.—KFON Concert Orchestra.

6:00 to 6:50 p. m.—Organ Recital from State Theater

6:50 to 7:00 p. m.—Pacific Land Co.'s Travelogue

9:00 to 10:00 p. m.—"The Hour De Luxe."

DAILY EXCEPT SUNDAY AND MONDAY—

2:30 to 4:00 p. m.—Municipal Band Concert.

WEEK COMMENCING SUNDAY, JANUARY 30, 1927

SUNDAY, JANUARY 30—

1:30 to 2:30 p. m.—Musical program presented by Wm. Conrad Mills.

4:00 to 5:00 p. m.—Vesper hour.

5:00 to 6:00 p. m.—KFON Concert Orchestra, sponsored by Long Beach Business Men.

6:00 to 6:20 p. m.—Birkel Music Company piano recital, featuring Weber Duo-Art.

6:20 to 6:55 p. m.—KFON Concert Orchestra.

7:00 to 7:45 p. m.—Parry's Cafe Orchestra.

7:45 to 9:00 p. m.—Services from First Church of Christ, Scientist, by remote control.

9:00 to 12:00 p. m.—"Everybody's Night," amateurs and professionals.

MONDAY, JANUARY 31—

7:00 to 8:00 p. m.—Thrifty Sandy Program, sponsored by Citizens State Bank.

8:15 to 9:00 p. m.—Texas Cowboys Duet in Old Time Dance Music.

10:00 to 11:00 p. m.—Majestic Ballroom Orchestra, by remote control.

11:00 to 12:00 midnight—Capitol Theater Organ Recital, by remote control.

TUESDAY, FEBRUARY 1—

7:00 to 7:30 p. m.—Studio Program.

7:30 to 8:00 p. m.—"Chat for Booklovers," presented by Hewitt's Bookstore.

8:00 to 9:00 p. m.—Press-Telegram presenting Long Beach Municipal Band.

10:00 to 11:00 p. m.—Majestic Ballroom Orchestra, by remote control.

11:00 to 12:00 midnight—Capitol Theater Organ Recital, by remote control.

WEDNESDAY, FEBRUARY 2—

7:00 to 8:00 p. m.—Pacific Coast Club Orchestra, by remote control.

8:15 to 9:00 p. m.—Press-Telegram presenting Pacific Coast Club Orchestra

11:00 to 12:00 midnight—Capitol Theater Organ Recital, by remote control.

THURSDAY, FEBRUARY 3—

7:00 to 8:00 p. m.—Piggly Wiggly Girls.

8:00 to 9:00 p. m.—Press-Telegram presenting Long Beach Municipal Band.

10:00 to 11:00 p. m.—Majestic Ballroom Orchestra, by remote control.

11:00 to 12:00 p. m.—Capitol Theater Organ Recital, by remote control.

FRIDAY, FEBRUARY 4—

7:15 to 7:45 p. m.—Church of Christ, by Rev. Ernest Bean.

7:45 to 8:00 p. m.—"A Selma Sizer Program."

8:00 to 9:00 p. m.—Press-Telegram presenting the Long Beach Municipal Band.

10:00 to 12:00 midnight—Eli's Frolic, Lodge No. 885.

SATURDAY, FEBRUARY 5—

7:00 to 8:00 p. m.—Pacific Coast Club Orchestra, by remote control.

8:00 to 9:00 p. m.—Press-Telegram presenting Long Beach Municipal Band.

11:00 to 12:00 midnight—Capitol Theater Organ Recital, by remote control.

Program Published as Submitted by the Station.

HORNS

FOR
PORTABLES
CABINETS
CONSOLES

Wonderful Tone; no square corners to cause that hollow sound like "tootin'" down a barrel.

COMPARISON INVITED H O R N S

Number—Size	Tone Travel
100—6" Diam., 6" Deep.....	13"
200—5"x8", 8" Deep.....	18"
200—8" Diam., 8" Deep.....	18"
300—10" Diam., 9½" Deep....	23"
400—8"x12", 11½" Deep.....	35"
400—11½" Diam., 11½" Deep.	35"

UNITS

We Represent
Holliday Radio
Co., Inc.

Manufacturers of the best Commercial Unit on the market. Will take the power tube without distortion.
Fully Guaranteed

We Will Out-Demonstrate Any Horn Made, Regardless of Its Cost or What Material Is Used in Its Manufacture.

M. J. CARLS, 1929 S. Los Angeles St. WE. 2712. Los Angeles

*Splendid
Service*



*Competent
Salesmen*

QUALITY

Radiolas are designed to give you quality reception. Power tubes handle volume without distortion. You will enjoy both speech and music because it is Real.

Broadcast transmission will no doubt be improved and Radiolas are made to take care of any development of the future.

DEMONSTRATIONS AT YOUR CONVENIENCE

Eastman Kodak Stores, Inc.

510 South Broadway
LOS ANGELES



Tom Sexton
Announcer

San Diego, California—245.8 Meters

KFSD

1000 WATTS—1220 KILOCYCLES
AIRFAN RADIO CORPORATION
U. S. Grant Hotel, 328 Broadway, San Diego. Main room
RAYMUND V. MORRIS, President
TOM SEXTON, Announcer
"Kiss From San Diego"

DAILY—

6:30 to 7:00 p. m.—Nightly musical review.
7:00 to 8:00 p. m.—"Vesper Hour," Orthophonic recital.

DAILY EXCEPT SATURDAY—

6:15 to 6:30 p. m.—Ye Towne Topics.

DAILY EXCEPT SUNDAY—

10:00 to 11:00 p. m.—Harvey Bell and his U. S. Grant Hotel Or-
chestra.

WEEK COMMENCING SUNDAY, JANUARY 30, 1927

SUNDAY, JANUARY 30—

3:00 to 4:00 p. m.—Temple service of the Theosophical University at Point Loma. Carr.
8:00 to 9:00 p. m.—Mixed musical program.
9:00 to 10:00 p. m.—All Star Five and Gene Merritt, baritone.

MONDAY, JANUARY 31—

8:00 to 9:00 p. m.—First Unitarian Church, Howard B. Bard
9:00 to 10:00 p. m.—Mixed musical program.

TUESDAY, FEBRUARY 1—

8:00 to 9:00 p. m.—Union Title Company "Classic Hour" program.
9:00 to 10:00 p. m.—R. V. Morris, Inc., Hawaiian music.

WEDNESDAY, FEBRUARY 2—

7:00 to 7:15 p. m.—Health and Beauty talks, by Dorothy Hays, Inc.
7:15 to 7:30 p. m.—Studio program.
7:30 to 8:30 p. m.—Concert program furnished by the Theosophical University
8:30 to 10:00 p. m.—K F S D request program.

THURSDAY, FEBRUARY 3—

8:00 to 9:00 p. m.—John P. Mills, Inc., Riviera Villas Orchestra
9:00 to 10:00 p. m.—"Popular Hour" Orthophonic recital.

FRIDAY, FEBRUARY 4—

8:00 to 9:00 p. m.—P. M. Dairy Concert Orchestra, trio and songs
9:00 to 10:00 p. m.—Mixed musical program.

SATURDAY, FEBRUARY 5—

8:00 to 9:00 p. m.—Mme. de Bauviere, "Franco-American" hour.
9:00 to 10:00 p. m.—Mixed musical program.
11:00 p. m. to 1:00 a. m.—K F S D Midnight Frolic. Fun for everyone.

Program Published as Submitted by the Station.

Alternating Current Transformers

Filament
Trans.
\$5.00

I Specialize on Operating Sets
Without Batteries
RAY CAMPBELL

Plate
Trans.
\$5.00

1217 Diggins Street, near N. Huntington Drive, Two Blocks from Sierra Vista Station.
LOS ANGELES, CALIF. Phone GARfield 7891. Wholesale Dealers: COOK-NICHOLS.



THE COMPLETE BOOTER AERIAL

Ready to install—6 Booters, 50 feet special
aerial wire. Insulators, lead-in wire. It in-
creases Volume with short aerial Selectivity.

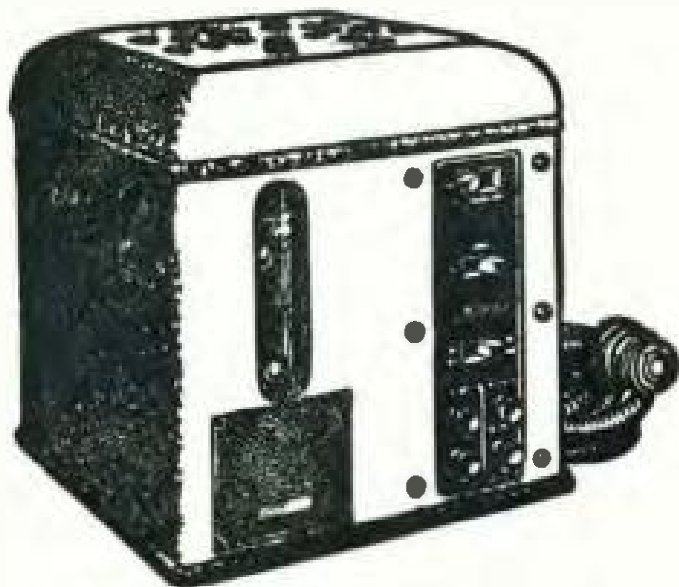
Sent Postpaid \$2.50

(A Set of Six Booters Alone, \$1.00)

The F. E. Wolters Corp.

Radio Division
324 N. San Pedro St. Los Angeles, Calif.

Plenty of "A" Power All the Time



The WILLARD Radio "A" Power Unit and "B" Battery Charger

"I'll make it my job to show someone what radio satisfaction really is. My two-speed charging keeps me in condition *all* the time. Colored balls indicate how much charge remains—and you simply throw a switch to turn on the charging current. I keep 'B' Batteries charged, too."

Ask about Willard "A" and "B" Radio Units, also about Willard Radio Batteries.

AT

WILLARD SERVICE STATIONS

OR YOUR NEAREST RADIO DEALER



CURTIS PECK
Announcer

San Francisco, California—428.3 Meters

KPO

1000 WATTS—700 KILOCYCLES
HALE BROTHERS AND THE CHRONICLE
ALBERT J. HODGES, Technical Director
Phone Kearney 5777
"The Voice of San Francisco"

DAILY EXCEPT SUNDAY—

- 6:45, 7:15 and 7:45 a.m.—Daily health drill by Hugh Barrett Dobbe
- 10:10 a.m.—Household Hints.
- 10:30 a.m.—"Ye Towne Crier."
- 12:00 noon—Time signals and Scripture reading.
- 12:30 to 1:00 p.m.—Clift Hotel Concert Trio.
- 1:00 to 2:00 p.m.—Rudy Selger's Fairmont Hotel Orchestra.
- 3:30 to 5:30 p.m.—Palace Hotel Concert Orchestra.
- 5:30 to 6:15 p.m.—Children's Hour.
- 6:15 to 6:30 p.m.—"Ye Towne Crier."
- 6:30 to 7:00 p.m.—States Restaurant Orchestra.
- 7:00 to 7:30 p.m.—Rudy Selger's Fairmont Hotel Orchestra
- 7:30 to 8:00 p.m.—DX.

WEEK COMMENCING SUNDAY, JANUARY 30, 1927

SUNDAY, JANUARY 30—

- 9:45 to 10:45 a.m.—Undenominational and non-sectarian church service.
- 10:45 a.m.—United States weather forecast and general information.
- 2:40 to 4:15 p.m.—Concert of the San Francisco Symphony Orchestra, Alfred Heriz, di rector, to be broadcast from the New Curran Theater by KPO, KGO and KFI
- 6:00 to 6:30 p.m.—States Restaurant Orchestra.
- 6:35 to 8:35 p.m.—Palace Hotel Concert Orchestra.
- 8:35 to 10:00 p.m.—Rudy Selger's Fairmont Hotel Concert Orchestra.
- 10:00 to 12:00 p.m.—John Wolohan and his Californians.

MONDAY, JANUARY 31—

- 8:00 to 8:10 p.m.—Chamber of Commerce talk on "Industrial San Francisco."
- 8:25 to 9:00 p.m.—Bridge lesson No. 14.
- 9:00 to 10:00 p.m.—Studio program.
- 10:00 to 11:00 p.m.—Billy Long's Cabiriana.
- 11:00 to 12:00 p.m.—KPO's Variety Hour.

TUESDAY, FEBRUARY 1—

- 8:00 to 9:00 p.m.—"Uda Waldrop Hour," featuring Uda Waldrop, KPO's official organist
- 9:00 to 10:00 p.m.—Program by the KPO Trio and Gypsy and Marta.
- 10:00 to 11:00 p.m.—Palace Hotel Rose Room Dance Orchestra.
- 11:00 to 12:00 p.m.—Billy Long's Cabiriana.

WEDNESDAY, FEBRUARY 2—

- 8:00 to 9:00 p.m.—Program by the Atwater Kent Artists.
- 9:00 to 10:00 p.m.—"Chickering Hour," presented by Leo S. Robert.
- 10:00 to 11:00 p.m.—States Restaurant Orchestra.
- 11:00 to 12:00 p.m.—John Wolohan and his Californians.

THURSDAY, FEBRUARY 3—

- 8:00 to 10:00 p.m.—Studio program.
- 10:00 to 11:00 p.m.—Palace Hotel Rose Room Dance Orchestra.
- 11:00 to 12:00 p.m.—John Wolohan and his Californians.

FRIDAY, FEBRUARY 4—

- 8:00 to 10:00 p.m.—Walter Krausgrill's Balconades Ballroom Orchestra
- 10:00 to 11:00 p.m.—States Restaurant Orchestra.
- 11:00 to 12:00 p.m.—John Wolohan and his Californians.

SATURDAY, FEBRUARY 5—

- 8:00 to 9:00 p.m.—Simultaneous broadcast by KPO and KFI of a program presented by the San Francisco branch of the manufacturers of White King and Mission Bell Soap.
 - 9:00 to 10:00 p.m.—Palace Hotel Rose Room Dance Orchestra.
 - 10:00 p.m. to 1:00 a.m.—Walter Krausgrill's Balconades Ballroom Orchestra.
- Program Published as Submitted by the Station.

We Carry GOSILCO SUPER AERIAL WIRE
DX RECEPTION ASSURED — REMARKABLY SELECTIVE

<p>\$15.00 Baldwin Symphony Speakers, while they last \$7.50</p> <p>Large 45-Volt 'B' Bat., \$1.85</p> <p>\$4.75 Heavy Duty 'B' Batteries \$2.95</p>	<p>\$10.50 Trickle Chargers. \$8.15</p> <p>\$39.50 "B" Eliminators. \$29.90</p> <p>6 V. 100 A.H. Storage Batteries \$7.75</p> <p>Terms on Majestic "B" Eliminators</p>
---	---

J. C. RENDLER

TRinity 4281
OPEN EVENINGS
EST. 1904
625 S. MAIN
LOS ANGELES

NOW THE **SUPREME R-F 5** IS SOLD
FACTORY DIRECT TO YOU
5-Tube Console Complete



\$ **59**

Built-in speaker, large tubes, 100 A. H. Rubber Case Battery even the inside aerial is included—nothing else to buy.

Selectivity :: Quality :: Distance

New Modified S. L. F. condensers allow ample separation of low wave lengths and gives absolute selectivity on all stations. Using Kellogg's laboratory grade transformers assures you of tone perfection, and for distance the utmost in sensitivity has been achieved through proper design of condensers and inductance.

Made of Finest Parts Obtainable

The Supreme—Made of the finest of material such as Kellogg, Yaxley, Carter, C. R. L., Benjamin, Bakelite coils.

Order Your Set Today

and you'll say, like everyone else that hears the Supreme; "That's the best receiver I ever heard—it's wonderful." It's simply not equalled for purity of tone or fidelity of reproduction. Remember every part is guaranteed to you—you take no chances.

THE PATTERSON FACTORY TO YOU SALES PLAN

puts a guaranteed \$155 console, 5-tube receiver in your home for cash at about \$35 less than the actual wholesale price. Volume production is the answer.

Patterson Radio Manufacturing Co.

Established 1921

239 S. Los Angeles St.—VA. 8139

Los Angeles, Calif.



"MAC"

San Francisco, California—268 Meters

KFRC

Owned and Operated by Don Lee,
California Distributor for Cadillac Motor Car.
50 WATTS—1120 KILOCYCLES
LANSING TEVLS, Manager
HARRISON HOLLWAY, Station Master
"Keep Forever Radiating Cheer"

DAILY EXCEPT SATURDAY AND SUNDAY—

10:00 to 11:00 a. m.—Sherman Clay & Co. concert
11:00 a. m. to 12:00 noon—Household Hints

DAILY EXCEPT SUNDAY—

12:00 to 2:00 p. m.—Eddie Harkness' Concert Orchestra
4:00 to 5:30 p. m.—Eddie Harkness' Concert Orchestra
5:30 to 6:30 p. m.—"Mac" and his Gang.
6:30 p. m.—Stage and Screen.

WEEK COMMENCING SUNDAY, JANUARY 30, 1927

SUNDAY, JANUARY 30—

5:30 to 6:30 p. m.—Mary and Dorothy Pasmore and Frank Moss in studio program
6:30 p. m.—Stage and Screen.
6:30 to 8:30 p. m.—Mark Hopkins Concert Orchestra. Vinton La Fererra conducting

MONDAY, JANUARY 31—

8:00 to 9:00 p. m.—Blue Monday Jamboree.
9:05 to 10:00 p. m.—Goodrich Silvertown Cord Orchestra. Reg Code directing
10:00 to 12:00 midnight—Eddie Harkness' Hopkins Dance Orchestra.

TUESDAY, FEBRUARY 1—

6:30 to 7:00 p. m.—Organ Recital.
7:00 to 7:30 p. m.—Russell Colvin sponsored program.
8:00 to 8:30 p. m.—KFRC Radio Movie Club.
8:30 to 12:00 midnight—Eddie Harkness' Mark Hopkins Dance Orchestra

WEDNESDAY, FEBRUARY 2—

6:30 to 7:00 p. m.—Program by the Western Motors Co
7:00 to 7:30 p. m.—"Puss" Donahoo and his orchestra.
8:00 to 9:00 p. m.—KFRC Little Symphony Orchestra.
9:00 to 10:00 p. m.—Community Chest Program.
10:00 to 12:00 midnight—Eddie Harkness' Mark Hopkins Dance Orchestra

THURSDAY, FEBRUARY 3—

6:30 to 7:00 p. m.—Eddie Stott, tenor. Robert De Leon, violinist; Glenhall Taylor, pianist
7:00 to 7:30 p. m.—Lou Emmel, baritone, sings popular songs.
8:00 to 9:00 p. m.—Mona Motor Oil program.
9:00 to 12:00 midnight—Eddie Harkness' Mark Hopkins Dance Orchestra

FRIDAY, FEBRUARY 4—

6:30 to 7:00 p. m.—Bill Hawley and "Puss" Donahoo, comedy song team
7:00 to 7:30 p. m.—Organ Recital.
8:00 to 10:00 p. m.—Educational program.
10:00 to 12:00 midnight—Eddie Harkness' Mark Hopkins Dance Orchestra

SATURDAY, FEBRUARY 5—

6:30 to 7:00 p. m.—Popular program with Glenhall Taylor, pianist.
7:00 to 7:30 p. m.—Studio program.
8:00 p. m. to 1:00 a. m.—Eddie Harkness' Mark Hopkins Dance Orchestra.

Program Published as Submitted by the Station.

LOOK FOR OUR SPECIAL PRIZE OFFER IN NEXT WEEK'S ISSUE



Claire Morrison
Announcer

San Francisco, Calif.—399.8 Meters

KYA

1000 WATTS—750 KILOCYCLES

Headquarters at the Clift Hotel

CLAIR MORRISON, Mgr. EDWARD LUCES, Announcer

WEEK COMMENCING SUNDAY, JANUARY 30, 1927

DAILY EXCEPT SUNDAY—

12:30 to 2:00 p. m.—Sollie Heilbronner and the Clift Hotel Concert
Trio, playing in the Roof Lounge.
6:30 to 7:30 p. m.—Sollie Heilbronner and the Clift Hotel Concert
Trio, playing in the Main Dining Room

MONDAY, WEDNESDAY, FRIDAY—

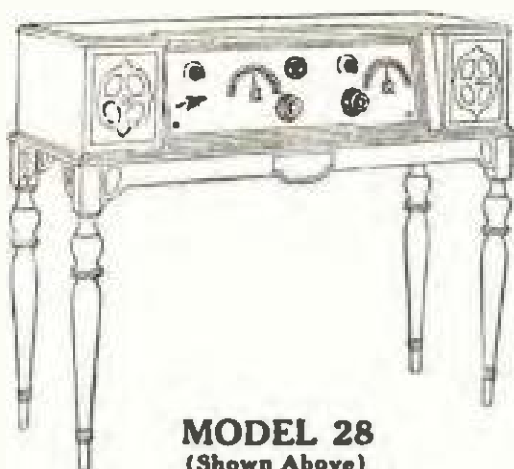
8:00 to 10:00 p. m.—Studio program

Why Worry About Your Batteries?

Zenith Electric

*Requires No Batteries of Any Kind
No Acid - No Chargers*

ZENITH TONE QUALITY IS UNEXCELLED HANDSOME
APPEARANCE



MODEL 28
(Shown Above)

\$315.00

Without Accessories

MODEL 27

\$295.00

Without Accessories

MODEL 29

\$415.00

Two Speakers
Less Tubes

SEE YOUR NEAREST ZENITH DEALER FOR DEMONSTRATION. A COMPARISON WITH ANY OTHER SET WILL CONVINCEN YOU

CHANSLOR and LYON CO.

LOS ANGELES
1423 So. Grand

SAN FRANCISCO
740 Polk St.



Edward L. Mitchell
Announcer

Oakland, California—361.2 Meters

KGO

4000 WATTS—830 KILOCYCLES
PACIFIC COAST STATION, GENERAL ELECTRIC CO.
Phone Fruitvale 5960

DAILY EXCEPT SUNDAY—

- 12:00 to 1:00 p. m.—Luncheon concert.
1:30 and 6:00 p. m.—Stock and weather reports Baseball scores
6:00 to 6:55 p. m.—Bem's Little Symphony Orchestra
6:55 to 7:30 p. m.—Weather, news and stock reports.

WEEK COMMENCING SUNDAY, JANUARY 30, 1927

SUNDAY, JANUARY 30—

- 11:00 a. m.—First Methodist Episcopal Church service.
2:40 p. m.—San Francisco Symphony Orchestra concert, direction of Alfred Hertz.
6:30 to 7:30 p. m.—Concert by Bem's Little Symphony Orchestra.
7:30 p. m.—Weather Bureau report.
7:35 p. m.—First Methodist Episcopal Church service.
9:00 to 10:00 p. m.—Concert by Bem's Little Symphony Orchestra.

MONDAY, JANUARY 31—

- 4:00 to 5:00 p. m.—California Federation of Women's Clubs.
6:30 to 8:00 p. m.—KGO Kiddies' Klub. Silent night.

TUESDAY, FEBRUARY 1—

- 8:00 p. m.—"Mental Measurements," lecture by Dr. Virgil E. Dickson.
8:00 to 9:00 p. m.—The Pilgrims. Eveready program by National Carbon Company.
9:00 p. m.—Joseph Henry Jackson: "Chats About New Books."
9:20 p. m.—Surprise broadcast.

WEDNESDAY, FEBRUARY 2—

- 8:30 p. m.—"For Instance," by General Jackson.
8:00 p. m.—Farm program, co-operating with U. S. Department of Agriculture.
8:30 p. m.—W. O. W. Male Trio.

THURSDAY, FEBRUARY 3—

- 10:40 to 11:00 a. m.—Classroom instruction, Oakland public schools.
8:00 to 8:00 p. m.—George W. Ludlow, "Friend to Boys."
8:00 to 9:30 p. m.—Light opera, "The Belle of Corneville," by Robert Planquette.
9:30 to 12:00 p. m.—John Philpot's Midshipmen, Paradise Ballroom, Oakland.

FRIDAY, FEBRUARY 4—

- 8:00 p. m.—Studio program.

SATURDAY, FEBRUARY 5—

- 8:15 to 9:15 p. m.—Program from Hotel Leamington, Oakland.
9:15 p. m. to 1:00 a. m.—Dance music, Wilt Gunzendorfer's Hotel Whitcomb Band.
Program Published as Submitted by the Station.

Oakland, California—303 Meters

KTAB

THE ASSOCIATED BROADCASTERS
ADA MORGAN O'BRIEN, Director



R. M. Hizzer
Announcer

DAILY EXCEPT SUNDAY—

- 8:45 to 9:15 a. m.—Prayer Service.
9:15 to 9:45 a. m.—Shopping and women's hour.
5:00 to 6:00 p. m.—Children's hour.
6:30 to 7:00 p. m.—Twilight hour.
7:00 to 7:30 p. m.—Shopping hour.

WEEK COMMENCING SUNDAY, JANUARY 30, 1927

SUNDAY, JANUARY 30—

- 9:45 to 10:45 a. m.—Prof. E. C. Linsley's Bible Class.
11:00 a. m. and 7:45 p. m.—Service of Tenth Avenue Baptist Church.

MONDAY, JANUARY 31—

- 8:00 to 10:00 p. m.—Selections from Flight Opera by Signor de Grassi, violinist; Irene Millier, pianist, and Mary Groom Richards, contralto.

TUESDAY, FEBRUARY 1—

- 8:00 to 8:15 p. m.—"Fifteen Minutes with Stamp Collectors," by Mr. Norman Shepard.
8:15 to 10:00 p. m.—KTAB Quartet.

WEDNESDAY, FEBRUARY 2—

- 8:00 to 10:00 p. m.—Program under direction of Wm. Hayes, baritone;

FRIDAY, FEBRUARY 4—

- 8:00 to 9:00 p. m.—Oden and Richard's Hawaiian Orchestra. D. McCloskey, baritone.
9:00 to 10:00 p. m.—Coat Island Goats.
Program Published as Submitted by the Station.



YOUR OLD PHONOGRAPH

HAS A

CASH VALUE! EXCHANGE IT

FOR A

Radiola 20

Operating without batteries.
No bother—no worry. Just
plug into light socket.

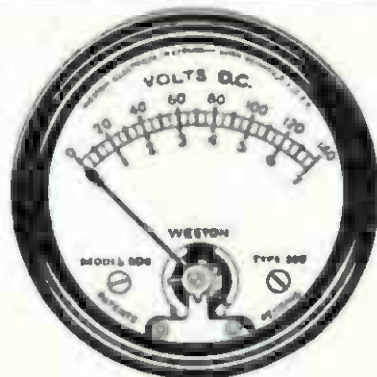
Let Us Demonstrate

Call BEacon 7431

Southern California Radio Co
2135 W. Pico Los Angeles

OPEN EVENINGS

Improve YOUR RADIO



RADIO enthusiasts with all types and makes of sets have learned that if tubes are not operated under precise voltage conditions they will experience tone distortion and needless tube expense.

These Weston Model 506 two inch, panel voltmeters possess the characteristics which distinguish Weston instruments from all others. There are various models of this 506 type—hence, the purchaser should consult his radiodealer or write us for the booklet entitled "Weston Radio Instruments."

Your Dealer has WESTON Instruments or will get them promptly from his Radio Jobber

WESTON ELECTRICAL
INSTRUMENT CORPORATION
Weston Avenue, Newark, N. J.

STANDARD THE WORLD OVER
WESTON
Pioneers since 1888



Paul H. Helmeyer
Announcer

Portland, Oregon—491.5 Meters

KGW

1000 WATTS—610 KILOCYCLES
THE MORNING OREGONIAN
"Keep Growing Wiser"

DAILY EXCEPT SUNDAY—

7:15 a. m.—Setting up exercise.
9:45 to 10:00 a. m.—Women's health exercise.
10:00 to 11:30 a. m.—Town Crier, weather reports, news items
12:30 to 1:30 p. m.—Noon concert.
6:00 to 7:00 p. m.—Dinner Concert.
7:30 to 7:45 p. m.—Weather and market reports

WEEK COMMENCING SUNDAY, JANUARY 30, 1927

SUNDAY, JANUARY 30—

10:55 to 12:30 p. m.—Noon services from the Church of Our Father.
4:00 to 6:00 p. m.—KGW Salon Orchestra.
7:30 to 9:00 p. m.—Services from the First Presbyterian Church.
9:00 to 9:10 p. m.—Concert by the Chevrolet Little Symphony Orchestra

MONDAY, JANUARY 31—

7:00 to 7:30 p. m.—Children's program.
8:00 to 10:00 p. m.—Vaudeville entertainment.
10:00 to 12:00 p. m.—Cole McElroy's orchestra

TUESDAY, FEBRUARY 1—

2:30 to 3:00 p. m.—Women's Matinee.
7:00 to 7:30 p. m.—Children's program broadcast simultaneously with KFOA and KHQ.
8:00 to 10:00 p. m.—Educational program.
10:00 to 12:00 p. m.—Herman Kenin and his orchestra

WEDNESDAY, FEBRUARY 2—

7:00 to 7:15 p. m.—Utility services.
7:30 to 8:00 p. m.—Athens Poultry School.
8:00 to 9:00 p. m.—Concert presented by The Seventh U. S. Infantry Band.
9:30 to 10:00 p. m.—Concert, presented by Maxwell House Coffee Company, broadcast simultaneously with KFOA and KHQ

THURSDAY, FEBRUARY 3—

7:45 to 8:00 p. m.—Lecture, given under the auspices of the Catholic Truth Society of Oregon.
8:00 to 10:00 p. m.—Vaudeville entertainment

FRIDAY, FEBRUARY 4—

2:00 to 3:00 p. m.—Women's Matinee.
7:00 to 7:30 p. m.—Children's program.
8:00 to 8:30 p. m.—Weekly meeting of the KGW Movie Club.
8:30 to 10:30 p. m.—Dance music by Cole McElroy's orchestra
10:30 to 12:00 p. m.—Weekly frolic of the Keep Growing Wiser order of Hunt Owls, broadcast with KMO, KFOA and KHQ.

SATURDAY, FEBRUARY 5—

7:00 to 7:30 p. m.—Children's program from KFOA through KGW
8:00 to 8:30 p. m.—Concert by Pacific University Glee Club
9:00 to 10:00 p. m.—Concert, Calumet String Quartet
10:00 to 12:00 p. m.—Herman Kenin and his orchestra.

Program Published as Submitted by the Station.

STANDARD RADIO CO.

417 West Pico Street, Los Angeles, Calif.

FADA—ATWATER-KENT AND WESTERN ELECTRIC DEALER

We Carry a Complete Line

Open Model Atwater-Kent Wave Length Cut Down to 200 Meters
We Are Also Making a Specialty of Sharpening Tuning in Any Radio Set
2-Tube Harkness Changed to 3-Tube, Guaranteed Perfect Tune-Out on
Local Stations.

Telephone WEstmore 1560

Open Evenings Until 9 o'clock

YOUR NEIGHBORHOOD DEALER

FEDERAL AND RADIOLA



Two Ways of Saying
 "Radio At Its Best"

HETZEL RADIO
 SERVICE

"Hetzels Radios Excel"
 8303 Santa Monica Blvd.
 Phone GRanite 5574

BREMER TULLY

COUNTERPHASE

"8"

World's Most Satisfactory
 DX Receiver

H. A. EVEREST
 7761 Santa Monica Blvd.
 Nightly Demonstrations
 GLadstone 9602

LOOK FOR OUR SPECIAL PRIZE OFFER IN NEXT WEEK'S ISSUE

\$1

RADIO BATTERIES RECHARGED
 RENTAL BATTERIES FURNISHED

\$1

Called For and Delivered—Within 4-Mile Radius
 Small Added Charges over 4 Miles

LU DLUM & STEELE, Willard Dealers

965 Venice Blvd.

Call WEstmore 6974

Los Angeles

Y O U R

Transmitting and receiving equipment designed and constructed.
 Radio and technical problems correctly solved.
 Questions answered accurately.

Receiver and all other equipment carefully tested, repaired and
 calibrated.

COMPLETE WORKING DRAWINGS OF AMERICA'S FINEST RECEIVER.
 ADJUSTABLE OUTPUT TRANSFORMERS THAT MATCH TUBES
 AND GOOD SPEAKERS FOR HIGH QUALITY.

Transformers and Choke Coils to any requirement. Complete Speech
 Amplifiers and Control Panels for broadcast stations and public address sys-
 tems or any parts for same. Punchings and design data for any Core, such
 equipment including that for tungar battery charging transformers of any ca-
 pacity and voltage. High grade Resistance Wire, special alloy steels.

FINEST EQUIPPED LABORATORY ON THE COAST
 COME AND INSPECT IT.

Technical Laboratory of N. E. Brown

Tel. THornwal 0270.

6805 S. Western Ave., Los Angeles



Freeman E. Talbot
Announcer

Denver, Colorado—322.4 Meters

KOA

830 KILOCYCLES—5000 WATTS
GENERAL ELECTRIC COMPANY
Pacific Standard Time
"Rocky Mountain Broadcasting Station"

DAILY EXCEPT SATURDAY AND SUNDAY—

10:45 a. m.—Weather, Stock and Produce Reports.

11:15 a. m.—Organ Recital.

8:00 p. m.—Stock and Market Reports.

7:00 p. m.—Musical Program.

DAILY EXCEPT SUNDAY—

11:15 a. m.—Organ recital.

WEEK COMMENCING SUNDAY, JANUARY 30, 1927

SUNDAY, JANUARY 30—

9:30 a. m.—Solemn High mass, Immaculate Conception Cathedral.

8:30 p. m.—Organ recital from Immaculate Conception Cathedral.

6:45 p. m.—Service of Immaculate Conception Cathedral.

MONDAY, JANUARY 31—

6:30 p. m.—Children's hour.

7:15 p. m.—Studio program presented by the Denver Post. "The Ghost Town of Buckskin Joe Comes to Life." A dramatization of the Old West.

TUESDAY, FEBRUARY 1—

2:30 p. m.—Housewives' matinee.

6:30 p. m.—Farm Question Box.

8:00 p. m.—Radio instruction in auction bridge.

WEDNESDAY, FEBRUARY 2—

6:30 p. m.—Wynken, Blynken and Nod time.

7:15 p. m.—Studio program presented by the Civic and Commercial Association of Littleton, Colo.

THURSDAY, FEBRUARY 3—

2:30 p. m.—Housewives' matinee.

3:30 p. m.—Culinary hints. Mrs. Clara Hoover Silent night.

FRIDAY, FEBRUARY 4—

12:00 noon—Organ recital, Aladdin Theater, Denver. Viola K. Lee, organist.

3:30 p. m.—Question Box.

6:00 p. m.—"Aggie Kickoffs." Extension service.

6:30 p. m.—Preview of International Sunday School lesson.

7:00 p. m.—Instrumental program.

7:15 p. m.—Studio program.

SATURDAY, FEBRUARY 5—

9:30 p. m.—Dance program, Scheuerman's Colorado Orchestra, from Colorado Club, Denver.
Program Published as Submitted by the Station.

"SUPER-HET" OWNERS!

Do you fight the elements, or do you get real reception?
With our system of construction and

TRANSTROM INTERSTAGE TRANSFORMERS

We Are Getting Unbelievable Results at Fifth and Broadway!

CALIBRATING, REPAIRING AND ACCESSORIES FOR ALL SETS

SIERRA RADIO LABORATORIES

318 W. Fifth St.

Los Angeles, Calif.

VAndike 6464

Mohawk Radio

One Dial

1319 Holmby Ave., Westwood Hills,
Sawtelle, California.

L. A. Duncan,
2891 W. Pico Street,
Los Angeles, California.

Dear Sir:

No, I did not get Mars! Neither did I penetrate the ethereal regions to that bourne from which no traveler returns!

Of course, I am disappointed as I expected the "Mohawk Six" you sold me to do all that, but instead my log consists of one hundred and ten (110) stations to date and still going strong. I will submit a few:

WTAG, KFQB, KFOA, WGY, W.C.B.L., KPRC, WORD, KRE, KFQU, KSD, KLX, KFXF, KFBC, KQW, KFKX, WSWS, KFWI, WIBO, KYW, KGW, KPO, WEBH, KOA, CNRV, KFAD, WMBB, WBBM, W'HO, W'EA, W'LF, KGO, KOIN, KOWN, W'GHP, KFSD, WOK, W'NYC, W'CFL, W'CCO, W'EW, W'SMB, KXMR, KGU, WRR, W'QG, W'QAW, W'OC, KHQ, WLS, KOMO, KFAW, W'ERN, KFVE, JOCK, W'CX, W'BP, W'OAI, KFAB, W'GN, KMOX, KFTF, KFCB, JOAK, WJR, KFNF, KJR, KSL, W'LIB, WAAF, KSEI, WHT, KZUK.

All these came in on the loud speaker, as I do not use ear phones.

Hoping the New Year of Nineteen Twenty-Seven will bring hosts of good things to the DXers.

Yours truly,

(Signed) S. HOWARD JACOBS,
1319 Holmby Ave.,
Westwood Hills, Los Angeles.

December 31, 1926.

Distributors of Southern California

COOK-NICHOLS CO.

411 S. San Pedro St.
Los Angeles, Calif.

482 S. Fair Oaks Ave.
Pasadena, Calif.

WHOLESALE ELECTRIC AND RADIO SUPPLIES

Not Just Another Eliminator BUT A Real Eliminator

No
Hum

No
Acid



Price
Complete
with Tube
\$45⁰⁰

Burns B-Power Unit

Will Handle Perfectly up to Twelve Tubes, Including Power Tube.

With the BURNS Eliminator true reproduction is secured from any set, since it gives the correct plate voltage, handling all the ranges of volume necessary, from that of the soft detector tube to that required for the new power tubes. Most satisfactory results can be secured not only on local stations, but it is particularly appreciated when tuning in distant elusive stations.

This instrument is made up in an exceptionally neat and compact form. The metal case is of small size—5½ in. x 7 in. x 8½ in., finished in black enamel. It will fit readily in place of dry batteries in the cabinet or it can be placed anywhere in proximity of the receiving set, there being nothing objectionable or unsightly in its appearance. There are no acids or fumes to cause damage to other equipment, nor is there any annoying hum or vibration.

This instrument operates from the lighting current like any other household appliance, the cost of operation being negligible. After once being put into operation it requires no further attention.

A Source of Unfailing Plate Voltage

Stock for the Jobber Carried by

HENGER-SELTZER CO.

1111 Wall Street
Los Angeles

377 Brannan Street
San Francisco

Timely Trade Topics

N. F. Andruss, Pacific Coast Distributor for Acme Electric & Mfg. Co., Cleveland, has just returned from an extended trip through the East visiting the several factories he represents.

He has recently taken on the "Diatron" line of vacuum radio tubes manufactured by Diamond Vacuum Products Company of Chicago. This is a new line to the Coast, but has been popular in the East for the past three years.

Mr. Andruss has engaged two adjoining booths at the coming San Francisco Auto Show, opening Jan. 29, and continuing to Feb. 6, and "Diatron" tubes will be shown along with Acme, Autogon and other lines of kindred interest.

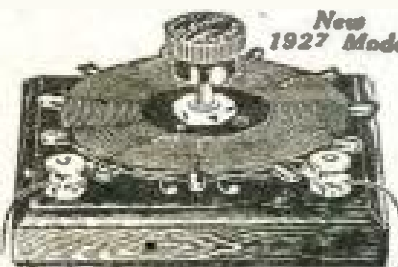
E. N. Rauland, president of the All-American Radio Corporation, has been delayed on his contemplated trip to the Pacific coast on account of the illness of his wife. He now expects to visit this territory in March, according to Carl A. Stone, the Pacific coast representative.

The Precision Mfg. Co., makers of the Pemco Power Units, gave a most enjoyable musical program over KNX on Monday evening, January 24th. This was the first of a series; specific dates of future programs will be announced in our forthcoming issues.

Owing to the large volume of business done by the C. W. Smith & Co., 1125 Wall street, Los Angeles, this firm has been compelled to double their space. They are completely remodeling their show rooms which will occupy the entire ground floor of the building they occupy. C. W. Smith Co., are known as the "Home of Utah Speakers," as they represent the Utah Radio Products Co., for the states of California and Oregon, they also distribute for California the Walbert line, which manufacture the famous Walbert Penetrola and Walbert Isofarad Receivers; also the complete line of McMillan Receivers. The Smith Co., are probably the largest distributors of high class radio cabinets on the coast, distributing the products of the United Cabinet Co. for California and Oregon. The new line being shown for the United Cabinet Co. includes wonderful consoles, which include the 18-inch Utah Cone speakers.

Henry C. Forrester, president of the Utah Radio Products Co., and W. C. Perkins, general manager of the United Cabinets Co., are expected in Los Angeles early in February, according to C. W. Smith, distributor for these concerns.

Steinite Interference Eliminator



New 1927 Model 400,000 Sold

\$1 Better reception of your money back. Thank your dealer.

NOTICE: If your dealer cannot supply you, send Dollar Bill direct and we will ship prepaid.

Adjustment complete. Works in 2 minutes. No tools. Doesn't disturb present log. No additional tubes required.

NO RADIO SET COMPLETE WITHOUT IT! Especially necessary for 1 and 2 dial controlled sets.

Best Stations at Will. Cut out interference and undesired stations. Tune in loud and clear. Amazing results—Tube or Crystal set with loop antenna used. Absorbs Static—Increases volume.

STEINITE LABORATORIES

814 So. Olive St. Los Angeles, Calif.
Phone TUCKER 7262

Steinite 7-Tube No Battery Radio, \$137.50. Loud speaker built in. Complete, \$163.50. Nothing to buy. Operates from light socket. 6-Tube Battery Set, \$48.50. Crystal Set, \$25.00. Aerial Eliminator, \$1. Noise Eliminators, 11 set 5, or 25c each. Crystals, 25c—5 for \$1.

Broadcasters' Digest

The Roller Canary Show, with its third annual exhibition at the Alexandria Hotel assembly room, was opened Friday evening, January 21st, by Uncle John and KHJ talent, including little Queen Titania and her Sandman, Naoma Sweeney Brown, whistler, and Harry C. Knox, flutist.

The old west, with its Indians, cowboys, gambling halls and "bad men" will be revived before KOA's microphone Monday night, January 31, at 8:15, in a special program sponsored by the Denver Post. The famous mining town of Buckskin Joe, Colorado, now a deserted ghost village, will come to life in a six scene musical dramatization that will bring back all the glamour, romance and high adventure of forty-niner days.

Frank Stever, baritone, who has just completed a singing tour throughout the Pacific coast, returned recently to KNX, the Evening Express, and appeared on a program, as he used to do regularly.

Robert H. Owen, widely known in electrical engineering circles, has been appointed in charge of technical operations of KOA broadcasting station, it was announced by the General Electric Company, today.

The most recent acquisition to KFI's long list of countries which have received programs from the Los Angeles station is San Salvador, Central America, Alfredo Triuenos reporting KFI reception without interference or fading and with good signal strength from 10 to 12 midnight, San Salvador time, 9 to 11 p. m., Pacific Time.

Several KNX artists are now appearing in special theater engagements. For example, June Pursell, Ron Wilson and Tom Breneman are filling an Orpheum contract at the present time; Mory Leaf, bedtime story teller, is in the prologue for the picture, "What Price Glory," while Hy Meyer, humorist, is taking a part in the new Cecil de Mille film, "King of Kings."

Recent novelties on the children's hour conducted by KHJ by Uncle John have included a pet deer brought into the studio for the children. Its antics were enjoyed by the youngsters and descriptions of the play about the studio were broadcast. A baby elephant will be used to amuse the kiddies on a future program.

Possibly Lew Fields was forearmed with the knowledge that there was no slander law on the air when he told little Joe Weber that he looked like a good looking fish.

ONLY \$3.00 A YEAR

Have RADIO DOINGS mailed to your home every week. Fill out blank below. Either mail to us, or your dealer will be glad to take care of it for you. Please indicate whether NEW or RENEWAL.

HORWOOD PUBLISHING CO., 407 E. Pico St., Los Angeles,
CONGER & MOODY, Sharon Building, San Francisco, Calif.

Gentlemen: I enclose \$3.00, for which send me RADIO DOINGS for one year.
NEW—RENEWAL.

Name _____

Address _____

OUR EXCEPTIONAL OFFER

*Get the Two Greatest Radio Magazines
For Almost the Price of One!*

SAVE \$2.00

RADIO NEWS—The National Radio Monthly
with the largest circulation and following of
any Radio publication in the world—

Regular Price \$2.50

RADIO DOINGS—The Leading Pacific Coast
Radio Weekly—the Radio authority of the
Pacific Coast—

Regular Price \$3.00

These two leaders in their respective fields—the great
National Monthly and the great Pacific Coast Weekly—

BOTH NOW FOR \$3.50

You Can't Afford to Pass This Offer By

**Attach Money Order, Check or Currency to the Coupon and Mail to Us
Right Now**

RADIO DOINGS,
407 E. Pico Street,
Los Angeles, Calif.

Or Conger & Moody,
Sharon Bldg., San Francisco, Calif.

*Send me RADIO DOINGS and "RADIO NEWS" for one year.
I enclose \$3.50.*

Name.....

Address.....

City and State.....

(Specify NEW or RENEWAL)

FEDERAL Ortho-Sonic

Six tubes—wet or dry battery type. Single control without loss of efficiency. Extremely selective. Maximum receiving range. Rugged all-metal construction—will last a lifetime.



Illuminated scale—acts as pilot light. Perfect control of volume. Beautiful brown mahogany cabinet—rosewood inlay. Well finished—satin texture.

E-10 ORTHO-SONIC
PRICE \$150
Less Accessories

Table to Match \$50
Table Has Space For All Batteries

ANY FEDERAL DEALER Will Be Glad to Demonstrate

We Recommend

Eliminators

Modern
Sterling
Balkite

Cunningham
RADIO TUBES

Since 1915—
Standard for all Sets
In the orange and blue carton

Speakers

Amplion
Enchanter
Herald
Fine Arts

Wholesale Distributors

YALE RADIO ELECTRIC CO.

1111 Wall Street

LOS ANGELES

Westmore 3351

This file including all text and images are from scans of a private personal collection and have been scanned for archival and research purposes. This file may be freely distributed, but not sold on ebay or on any commercial sites, catalogs, booths or kiosks, either as reprints or by electronic methods. This file may be downloaded without charge from the Radio Researchers Group website at <http://www.otrr.org/>

Please help in the preservation of old time radio by supporting legitimate organizations who strive to preserve and restore the programs and related information.